

409198

Certified, Filed and or Recorded on  
April 29, 2015 2:20 PMBENTON COUNTY MINNESOTA  
MARILYN J NOVAK  
COUNTY RECORDERBy: CK

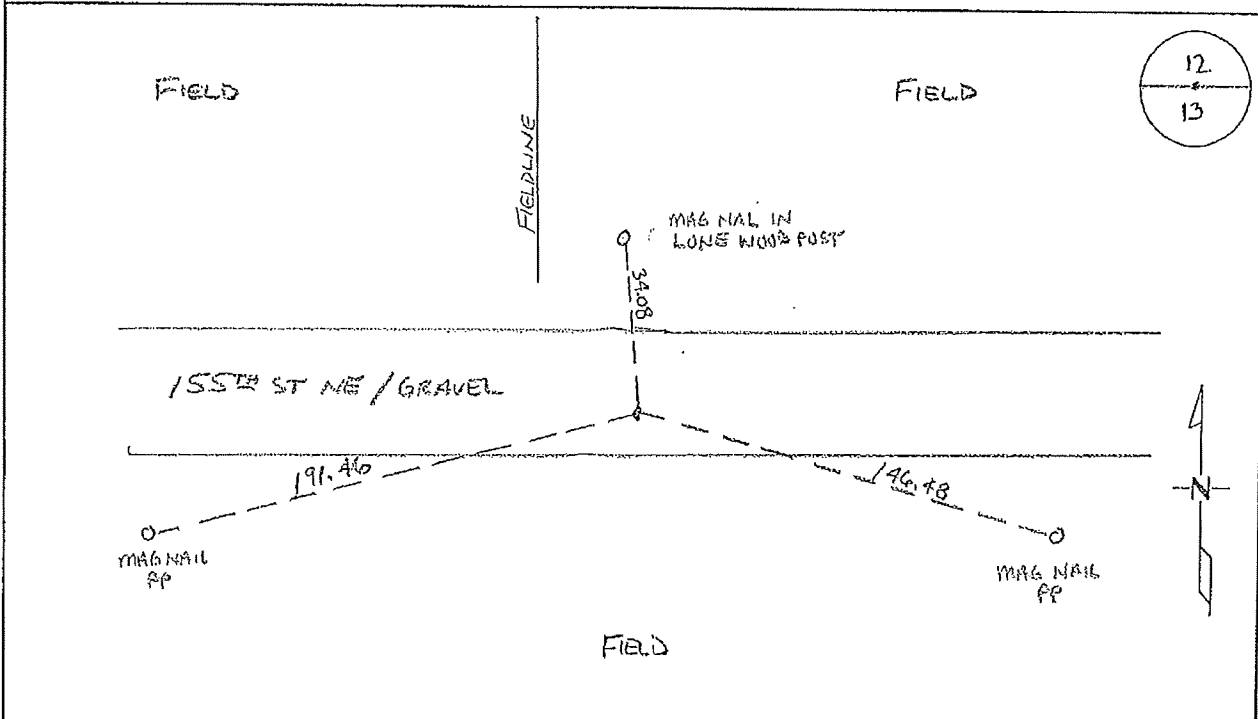
6 -- V -- I

# CERTIFICATE OF LOCATION OF GOVERNMENT CORNER

NORTH QUARTER Corner of Section 13, Township 38, Range 29  
4TH Principal Meridian, State of Minnesota, County of Benton

At the corner location shown on the sketch:

- ☒ On 03/25/2015 found a 3/4" IRON PIPE 2 FT SOUTH OF EAST/WEST CENTERLINE  
AND 8 FT EAST OF FIELDLINE NORTH
- ☒ left monument as found ☐ lowered monument ☐ removed monument (explain)
- ☐ On \_\_\_\_\_ placed on \_\_\_\_\_



Statement of evidence for this corner location is on back of this page.

I hereby certify that this survey, plan, or report was prepared by me or under my direct supervision and that I am a duly Licensed Land Surveyor under the laws of the state of Minnesota.

Signature Jerome C. Wittstock  
 Jerome C. Wittstock, PS, CFedS, Benton County Surveyor  
 License No. 19552

Date: 4/29/2015

**Statement of Evidence:**

B131

North Quarter Corner of Section 13, Township 38 North, Range 29 West, Alberta Township, 4<sup>th</sup> Principal Meridian, Benton County, Minnesota.

1855 Original US General Land Office survey set a wood post at this location and bearing trees were recorded.

14" Blk Ash	N 40 ½ E	20 links
13" Elm	S 35 W	10 links

Undated County Surveyor's Record Book 2, page 262, notes an iron monument.

2007 The Benton County Surveyor's Office found a 3/4" iron pipe 2 feet south of the east-west centerline of 155<sup>th</sup> Street NE. The found iron measures 2579.67 feet to the northwest corner with a fence south at the west sixteenth fitting a split within 0.1 feet and measures 2606.59 to the northeast corner of Section 13. The found iron pipe is accepted as marking the corner position.

Coordinates Obtained by GPS

NAD 83 (1996 Adjustment)

N- 185631.756

E- 539530.542

2015 The Benton County Surveyor's Office found a 3/4" iron pipe and verified the 2007 coordinates.