

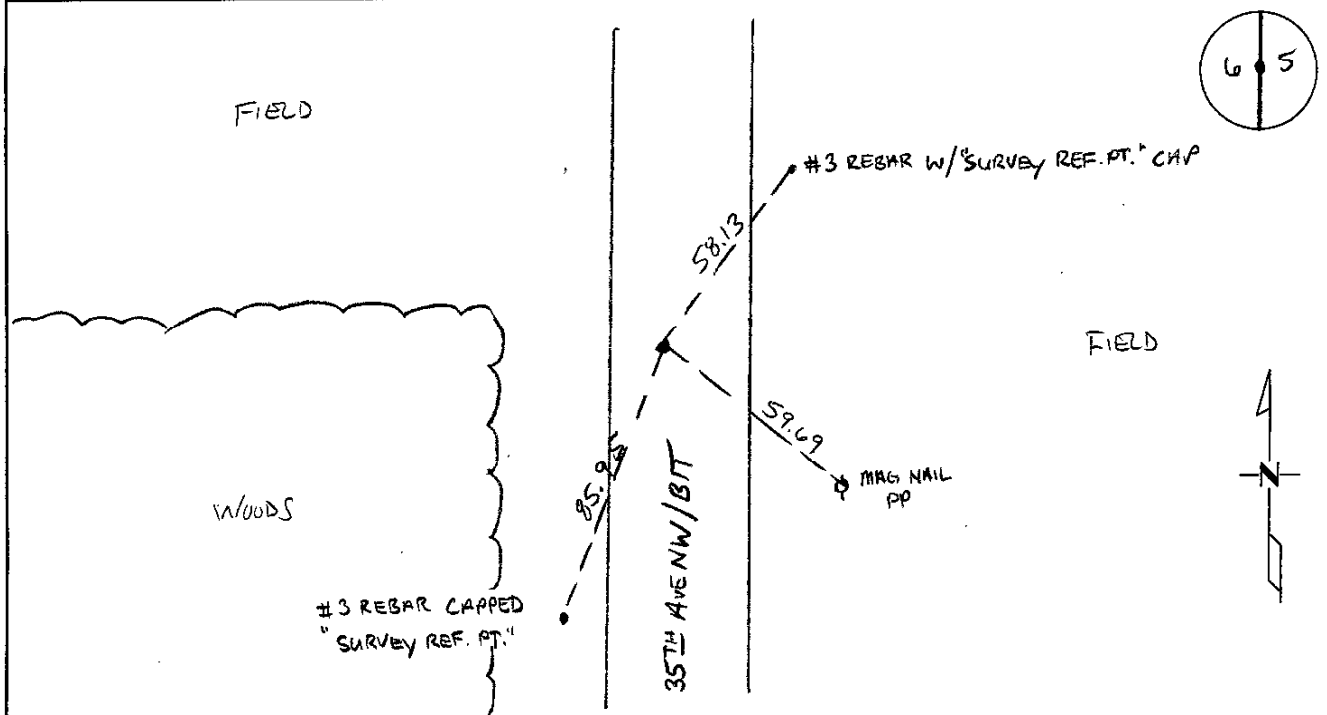
425218

Certified, Filed and or Recorded on
September 22, 2017 1:59 PMBENTON COUNTY MINNESOTA
CHERYL L. KANTOR
COUNTY RECORDERBy: KB

6-V-1

CERTIFICATE OF LOCATION OF GOVERNMENT CORNEREAST QUARTER Corner of Section 6, Township 38, Range 31
4TH Principal Meridian, State of Minnesota, County of Benton

At the corner location shown on the sketch:

☒ On 03/13/2014 found a 60D NAIL 1FT WEST OF N/S CENTERLINE
AND DOWN 0.6'☒ left monument as found ☐ lowered monument ☒ removed monument (explain)☒ On 08/21/2017 placed an 1/2" x 14" iron pipe capped 19552

Statement of evidence for this corner location is on back of this page.

I hereby certify that this survey, plan, or report was prepared by me or under my direct supervision and that I am a duly Licensed Land Surveyor under the laws of the state of Minnesota.

Signature Jerome C. Wittstock
Jerome C. Wittstock, PS, CFedS, Benton County Surveyor
License No. 19552Date: 20 Sept. 2017PAGE 1 OF 2

Benton County Surveyor's Office
Jerome C. Wittstock, County Surveyor
Minnesota License No. 19552

Statement of Evidence:**D063**

East Quarter Corner of Section 6, Township 38 North, Range 31 West, East Langola Township, 4th Principal Meridian, Benton County, Minnesota.

- 1852 Original US General Land Office survey set a wood post in a mound with a pit 6 links east at the corner location.
- 2002 No resurvey information was found on this corner in the Benton County records.
- 2014 The Benton County Surveyor's Office found a 60d spike about a foot west of the north-south centerline of 35th Ave NW. The found spike fits occupation along the north line of the southeast quarter of Section 6 and falls 33 feet north of occupation to the east. The spike measures 2650.49 feet for the half mile south to a stone found during excavation and 2765.49 feet for the half mile north to a found CIM. The measures are about 10 feet long of GLO south and 72 feet short of GLO north. Most of the closing distances on township boundaries vary considerably in Benton County so 72 feet is not surprising. The spike is accepted as marking the corner position.

County Coordinates from GPS:
NAD 83 (1996 Adjustment)
N- 193475.780
E- 451570.357

- 2017 The Benton County Surveyor's Office found the 60d spike and set a 1/2" x 14" iron pipe capped 19552 in place of the spike.