

425217

Certified, Filed and or Recorded on
September 22, 2017 1:59 PMBENTON COUNTY MINNESOTA
CHERYL L. KANTOR
COUNTY RECORDERBy: KB

G-V-1

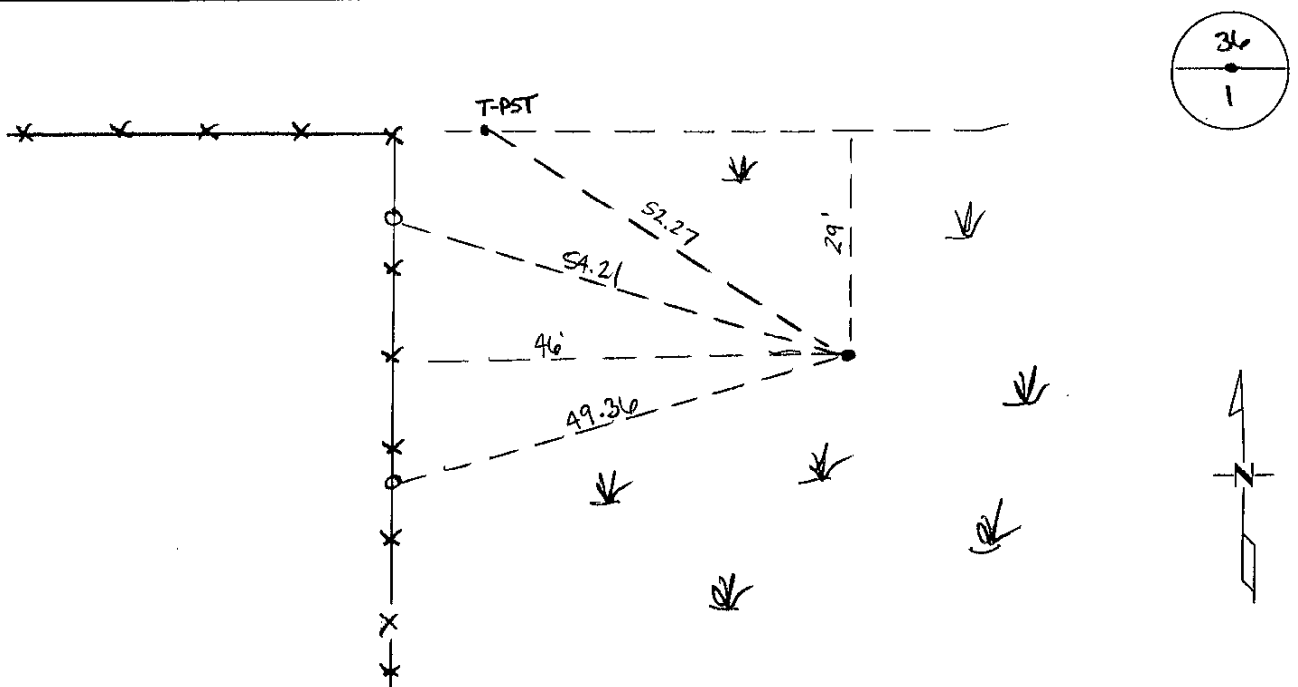
CERTIFICATE OF LOCATION OF GOVERNMENT CORNER

NORTH QUARTER Corner of Section 1, Township 38, Range 31
4TH Principal Meridian, State of Minnesota, County of Benton

At the corner location shown on the sketch:

☒ On 03/13/2014 found a 1/2 OPEN IN WETLAND

☒ left monument as found ☐ lowered monument ☐ removed monument (explain)
☐ On _____ placed an _____



Statement of evidence for this corner location is on back of this page.

I hereby certify that this survey, plan, or report was prepared by me or under my direct supervision and that I am a duly Licensed Land Surveyor under the laws of the state of Minnesota.

Signature Jerome C. Wittstock
 Jerome C. Wittstock, PS, CFedS, Benton County Surveyor
 License No. 19552

Date: 20 Sept 2017PAGE 1 OF 2

Statement of Evidence:

D011

North Quarter Corner of Section 1, Township 38 North, Range 31 West, East Langola Township, 4th Principal Meridian, Benton County, Minnesota.

- 1849 Original US General Land Office survey shows corner falls in pond and is inaccessible and was not set.
- 2002 No record evidence of this corner was found in Benton County offices. Need to check Morrison County records.
- 2007 The Benton County Surveyor's Office checked the Morrison County records, not finding any information. We searched the area and found a 1/2" open iron pipe in the swamp grass. The iron fits the lost position between section corners, falling 46 feet east and 29 feet south of a fence corner of fences to the west and south. The found iron falls on the approximate projection of centerline from the south, from the south quarter corner to the center south sixteenth. GLO topography could not be made to fit. With no historic information of a monument, the lost position is considered the best method of corner perpetuation and the 1/2" iron is accepted as marking the corner position.
- Coordinates obtained by GPS RTK (1996 adj.) to found 1/2" iron pipe
N-196325.710
E- 475557.989
- 2007 *Bonestroo completed the plat of TRESCO ACRES.*
- 2012 The Benton County Surveyor's Office found a 1/2" open iron pipe and verified the 2007 coordinates.
- 2014 The Benton County Surveyor's Office found a 1/2" open iron pipe and verified the 2007 coordinates, making reference ties as shown.