

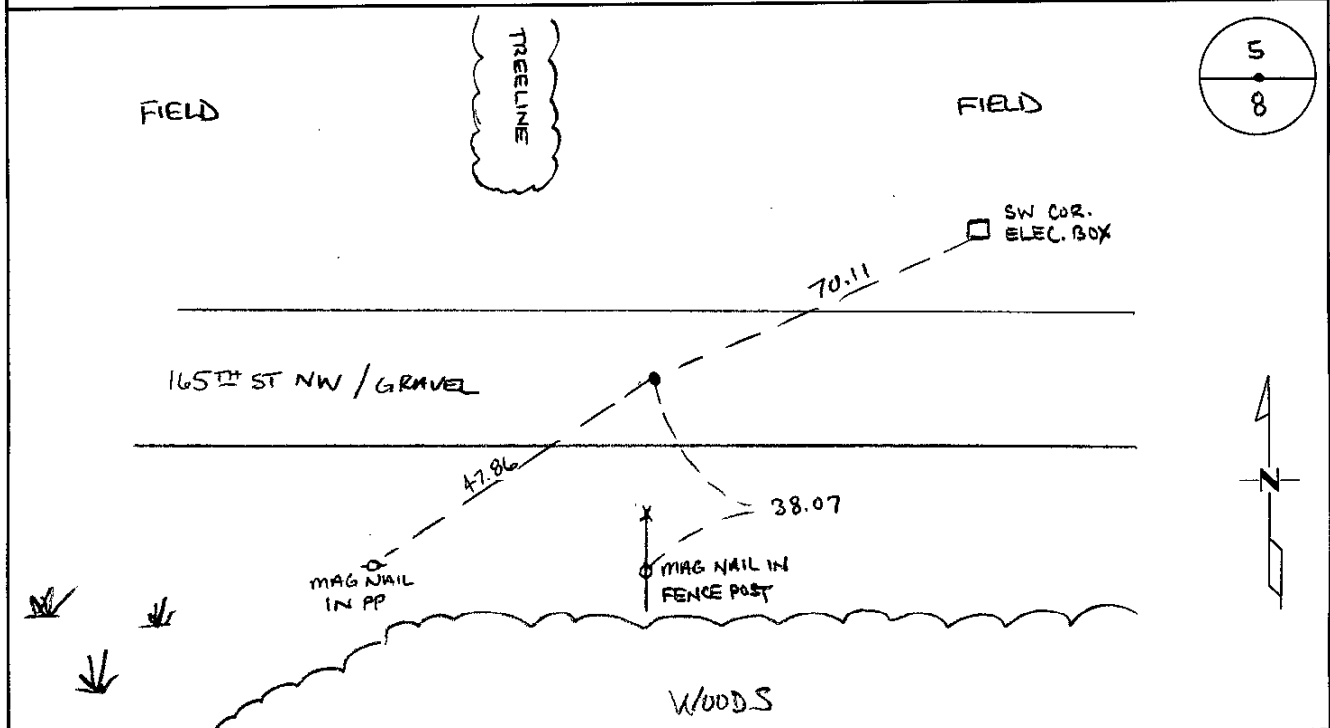
424519

Certified, Filed and or Recorded on
August 15, 2017 3:06 PMBENTON COUNTY MINNESOTA
CHERYL L. KANTOR
COUNTY RECORDERBy: LB

6-V-1

CERTIFICATE OF LOCATION OF GOVERNMENT CORNERNORTH QUARTER Corner of Section 8, Township 38, Range 31
4TH Principal Meridian, State of Minnesota, County of Benton

At the corner location shown on the sketch:

☒ On 03/13/2014 found a 1/2" OPEN PIPE☒ left monument as found☐ lowered monument☐ removed monument (explain)☐ On _____ placed an _____

Statement of evidence for this corner location is on back of this page.

I hereby certify that this survey, plan, or report was prepared by me or under my direct supervision and that I am a duly Licensed Land Surveyor under the laws of the state of Minnesota.

Signature Jerome C. Wittstock
Jerome C. Wittstock, PS, CFedS, Benton County Surveyor
License No. 19552Date: 15 August 2017

Benton County Surveyor's Office
Jerome C. Wittstock, County Surveyor
Minnesota License No. 19552

Statement of Evidence:**D081**

North Quarter of Section 8, Township 38 North, Range 31 West, East Langola Township,
4th Principal Meridian, Benton County, Minnesota.

- 1852 Original US General Land Office survey set a wood post at this location and bearing trees were recorded.
12" Bur Oak N 45 E 212 links
16" Bur Oak S 14 1/2 W 470 links
- 2002 No resurvey information was found on this corner in the Benton County records.
- 2003 6/25/03 Surveying & Engineering Professionals, Inc. found a 1/2" iron pipe at fence line occupation. Measured 2740.38 feet to the NW corner and 2674.18 feet to the NE corner.
County Coordinates determined from SEPI traverse:
NAD 83 (1996 Adjustment)
N- 190840.168
E- 454491.307
- 2014 The Benton County Surveyor's Office found a 1/2" open iron pipe in the east-west centerline of 165th St. NW on the extension of a fence to the south. The iron measures 2738.58 to a stone at the northwest corner of said section and 2674.18 feet to a PK Nail at the northeast corner, which fits GLO within about a foot, and overall fitting the 2003 distances well. The distance to the northwest corner varies from the 2003 distance because a stone was found during excavation of that corner. The iron is accepted as marking the corner position.