

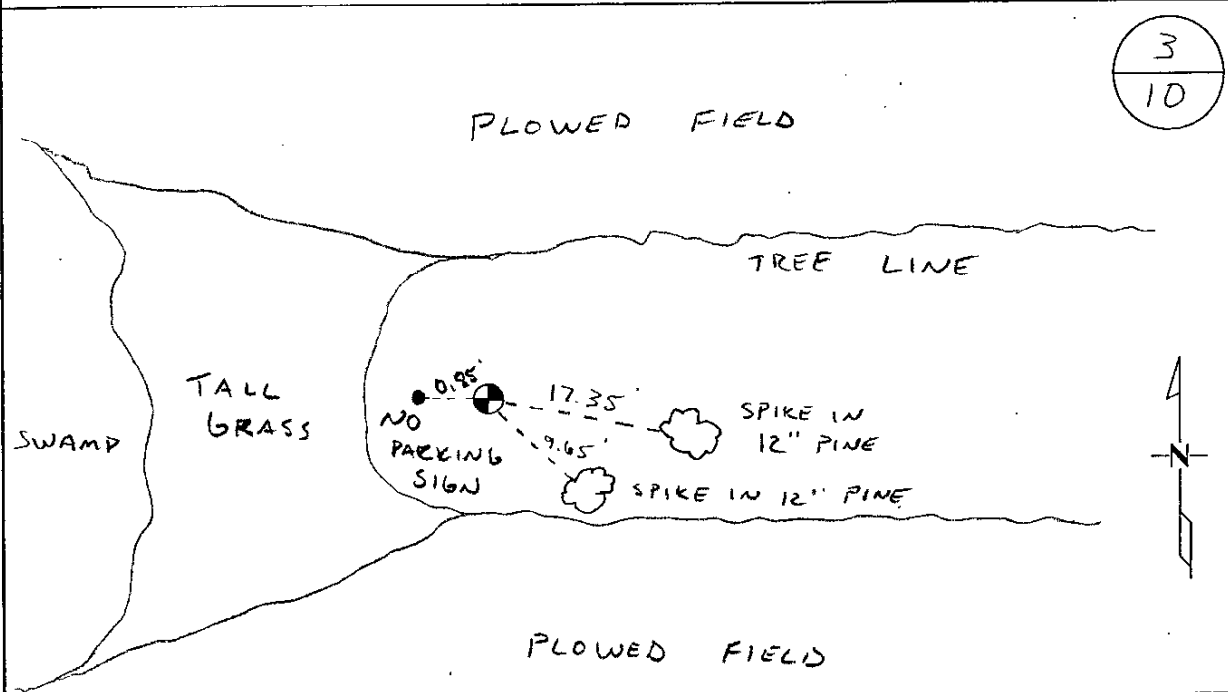
428599

Certified, Filed and or Recorded on
April 03, 2018 1:30 PMBENTON COUNTY MINNESOTA
CHERYL L. KANTOR
COUNTY RECORDERBy: BS

6-4-1

CERTIFICATE OF LOCATION OF GOVERNMENT CORNERNORTH QUARTER Corner of Section 10, Township 38, Range 31
4TH Principal Meridian, State of Minnesota, County of Benton

At the corner location shown on the sketch:

☒ On 2-15-12 found a 5X10 STONE. PLACED A 1/2" IRON PIPE WITH
RLS 19552 CAP ALONG THE NORTH FACE OF THE STONE.☐ left monument as found ☐ lowered monument ☐ removed monument (explain)☐ On _____ placed on _____

Statement of evidence for this corner location is on back of this page.

I hereby certify that this document was researched and prepared by me or under my direct supervision
and that I am a licensed Land Surveyor under the laws of the State of Minnesota.Signature Jerome C. Wittstock
Benton County Surveyor
License No. 19552Date: 3/29/2018PAGE 1 OF 2

Benton County Surveyor's Office
Jerome C. Wittstock, County Surveyor
Minnesota License No. 19552

Statement of Evidence:**D101**

North Quarter of Section 10, Township 38 North, Range 31 West, East Langola
Township, 4th Principal Meridian, Benton County, Minnesota.

- 1852 Original US General Land Office survey established this corner and set a wood post for the corner location with the following bearing trees marked:
- | | | |
|-------------|--------|-----------|
| 10" Bur Oak | S 18 E | 250 links |
| 8" Bur Oak | N 36 E | 115 links |
- 1916 County Surveyor's Record Book 2, pages 80 & 81, and Record Book A, Map No. 26, shows a survey of Section 3 by J.P. Soderstrum. He found that the Gov't BT's are O.K.
- 2012 The Benton County Surveyor's Office found a 5" x 10" stone and set a 1/2" x 14" iron pipe capped 19552 on its north side. The GLO bearing trees now fall in plowed fields and the topography call to the swamp to the west fits relatively well. The stone fits the split of distance at the east and west sixteenth pretty well, with occupation lines are somewhat dim. The stone also fits north-south with occupation to the east and west. The stone is accepted as marking the corner position.

County Coordinates
NAD 83 (1996 Adjustment)
N- 190959.770
E- 465112.192