

387206

Certified, Filed and or Recorded on
March 13, 2012 11:21 AM

BENTON COUNTY MINNESOTA
MARILYN J NOVAK
COUNTY RECORDER

By: BW

G - V - I

CERTIFICATE OF LOCATION OF GOVERNMENT CORNER

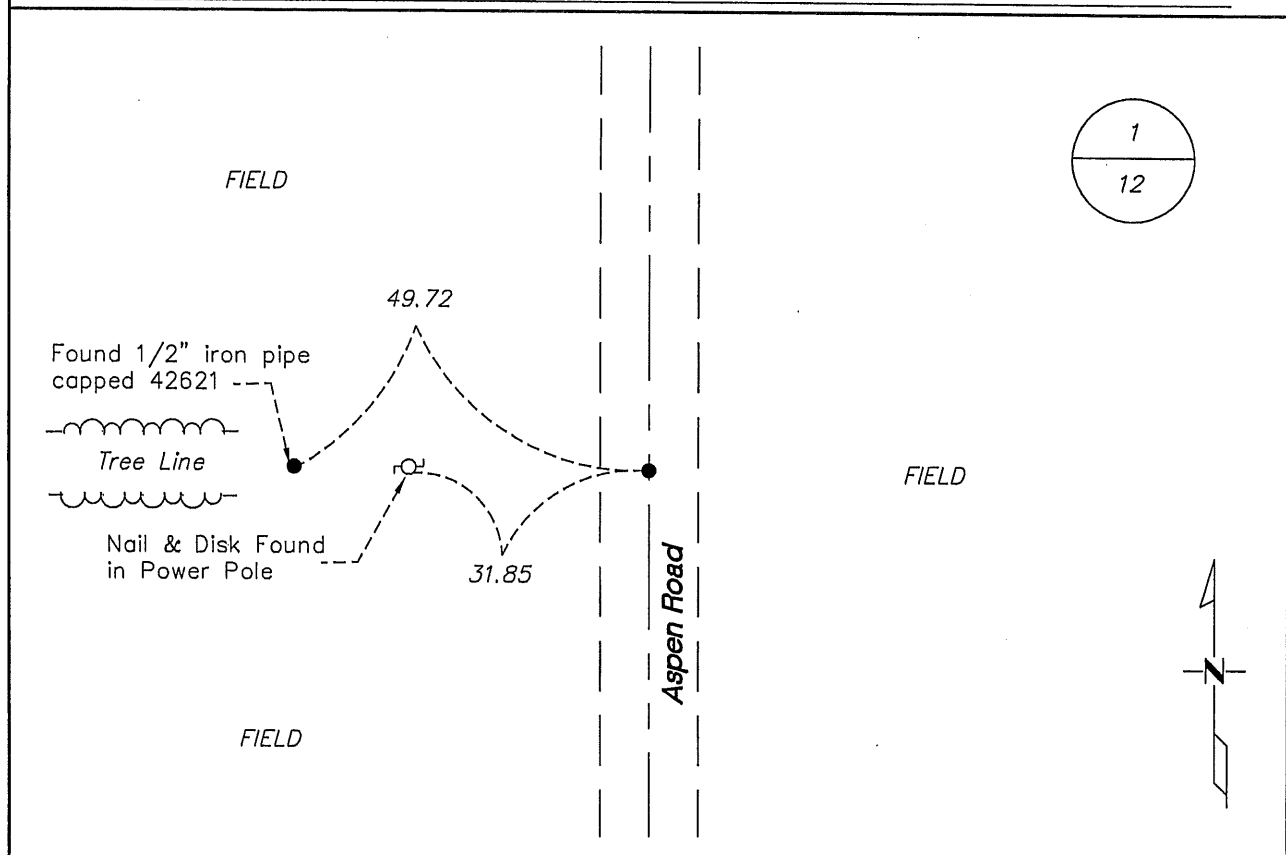
North Quarter Corner of Section 12, Township 38 North, Range 31 West, Fourth Principal Meridian, Benton County, Minnesota.

At this corner location shown on the sketch:

☒ On 08/07/2008 found a 1/2" open iron pipe

☒ left monument as found ☐ lowered monument ☐ removed monument (explain)

☐ On _____ placed an _____



Statement of evidence for this corner location is on back of this page.

I hereby certify that this document was researched and prepared by me or under my direct supervision and that I am a Licensed Land Surveyor under the laws of the State of Minnesota.

Signature Jerome C. Wittstock
Benton County Surveyor
License No. 19552

Date: 13 March 2012

Benton County Surveyor's Office
Jerome C. Wittstock, Deputy County Surveyor
Minnesota License No. 19552

Statement of Evidence:

D121

North Quarter Corner of Section 12, Township 38 North, Range 31 West, East Langola Township, 4th Principal Meridian, Benton County, Minnesota.

- 1852 Original US General Land Office survey set a wood post in a mound at the corner location.
- 1873 County Surveyor's Record Book 2, page 79, shows a road survey by C. Feller for a road running north-south from this corner.
- 1879 County Surveyor's Record Book 2, page 80, shows a town road survey by Richard Cronk for a road running north-south from this corner.
- 2005 Certificate of Survey by David Regan, LS 12236, shows iron pipe found at the corner.
- 2007 *Bonestroo completed the plat of TRESCO ACRES.*
- 2008 Westwood Professional Services, Inc. found a ½" iron pipe in the center of Aspen Road (north/south) with tree line occupation to the west. Measured 2650.36 feet to the NW corner and 2636.91 feet to the NE corner of Section 12. Measurements are consistent with Bonestroo survey. ½" iron pipe is accepted as marking the obliterated position for this corner.

County Coordinates obtained by GPS
NAD 83.(1996 Adjustment)
N- 191000.486
E- 475804.633