

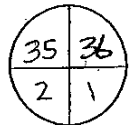
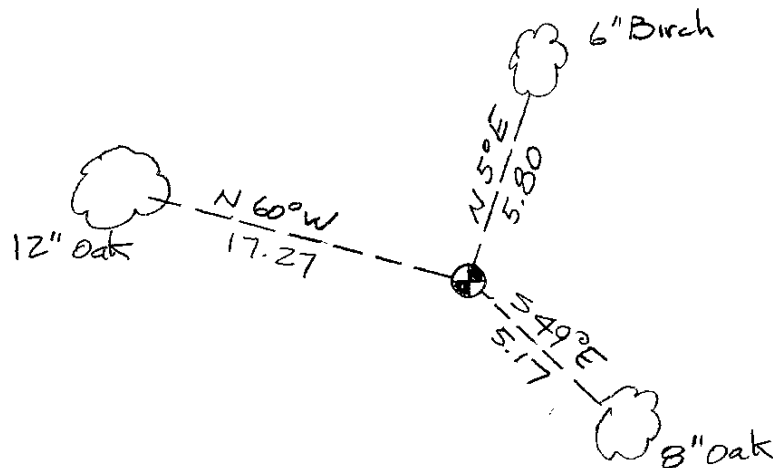
428388

Certified, Filed and or Recorded on
March 22, 2018 12:10 PMBENTON COUNTY MINNESOTA
CHERYL L. KANTOR
COUNTY RECORDERBy: PS

6-4-1

CERTIFICATE OF LOCATION OF GOVERNMENT CORNERNORTHEAST Corner of Section 2, Township 38, Range 31
4TH Principal Meridian, State of Minnesota, County of Benton

At the corner location shown on the sketch:

☒ On 1-5-2012 found a 1/2" iron pipe capped RLS 22702☒ left monument as found ☐ lowered monument ☐ removed monument (explain)☐ On _____ placed an _____

Statement of evidence for this corner location is on back of this page.

I hereby certify that this survey, plan, or report was prepared by me or under my direct supervision and that I am a duly Licensed Land Surveyor under the laws of the state of Minnesota.

Signature Jerome C. Wittstock
Jerome C. Wittstock, PS, CFedS, Benton County Surveyor
License No. 19552Date: 20 March 2018PAGE 1 OF 2

Statement of Evidence:

D022

Northeast Corner of Section 2 Township 38 North, Range 31 West, East Langola Township, 4th Principal Meridian, Benton County, Minnesota.

- 1849 Original US General Land Office survey set a wood post in a mound with a pit 6 links east at the corner location.
- 2002 No record evidence found on this corner in Benton County offices. Need to check Morrison County records.
- 2008 A search of the Morrison County records yielded nothing.
- 2012 The Benton County Surveyor's Office found a 1/2" iron pipe capped 22702. The found iron pipe falls 58 feet west of a fence to the south, which appears to be a fence of convenience and on the extension of an occupation to the north. The found iron measures 2703.15 feet to a stone found at the north quarter of said Section 2 and 5364.66 to a CIM at the northeast corner of Section 1 resulting in a 2682.33 half mile distance. GLO distances vary from modern measurements throughout the County so the measurements seem within reason. Since the found iron falls at a long-standing line of occupation and measures within reason, it is accepted as marking the corner position.

Coordinates Obtained by GPS
NAD 83 (1996 Adjustment):
N- 196325.852
E- 472875.547