

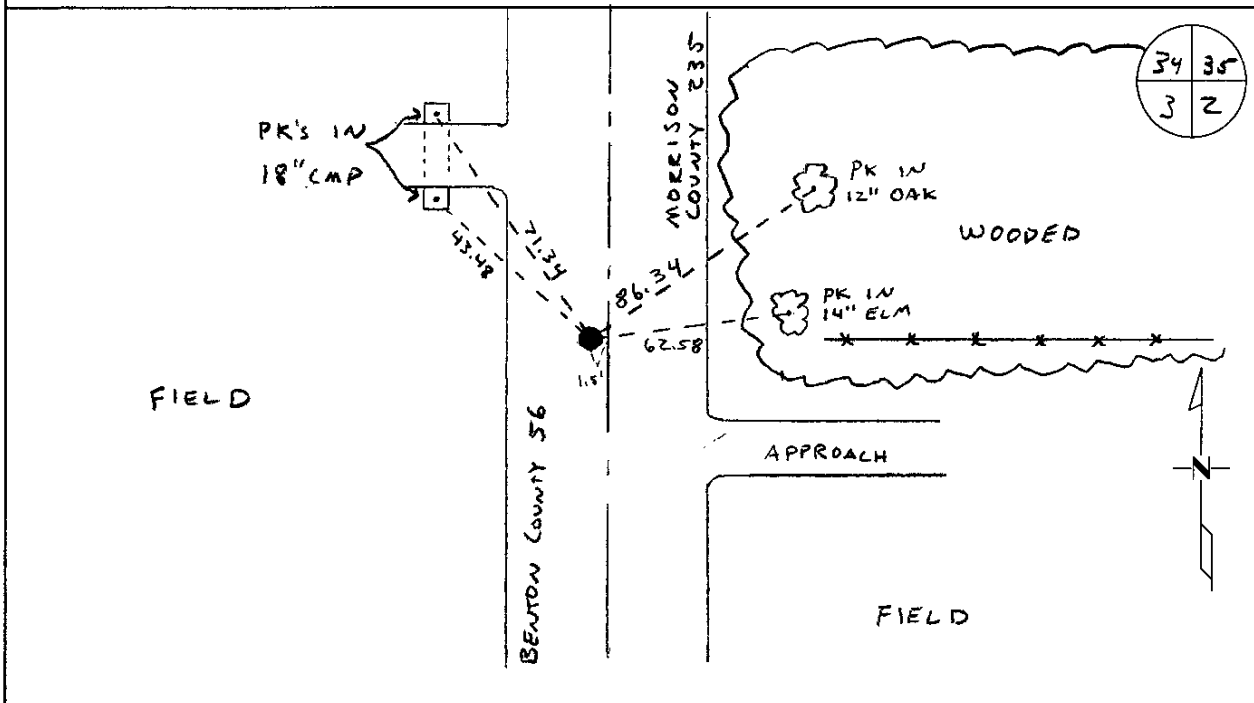
428387

Certified, Filed and or Recorded on
March 22, 2018 12:10 PMBENTON COUNTY MINNESOTA
CHERYL L. KANTOR
COUNTY RECORDERBy: BS

6-V-I

CERTIFICATE OF LOCATION OF GOVERNMENT CORNERNORTHEAST Corner of Section 3, Township 38, Range 31
4TH Principal Meridian, State of Minnesota, County of Benton

At the corner location shown on the sketch:

☒ On _____ found a 8"X8" GRANITE MONUMENT☒ left monument as found ☐ lowered monument ☐ removed monument (explain)☒ On 6/16/09 placed an 1/2" I.P. CAP #19552

Statement of evidence for this corner location is on back of this page.

I hereby certify that this document was researched and prepared by me or under my direct supervision
and that I am a licensed Land Surveyor under the laws of the State of Minnesota.Signature Jerome C. Wittstock
Benton County Surveyor
License No. 19552Date: 20 March 2018

Benton County Surveyor's Office
Jerome C. Wittstock, County Surveyor
Minnesota License No. 19552

Statement of Evidence:**D032**

Northeast Corner of Section 3, Township 38 North, Range 31 West, East Langola Township,
4th Principal Meridian, Benton County, Minnesota.

- 1849 Original US General Land Office survey set a wood post in a mound with a pit 6 links east at the corner location.
Line tree 8" Bur Oak West 25.19 chains
- 1916 County Surveyor's Record Book 2, page 81, and Record Book A, Map No. 26 shows a survey of Section 3 by J.P. Soderstrum. He did not find this corner and set a granite monument at the midpoint and on a straight line between the 1/4 corners east and west. Survey gives distances of 40.32 chains (2661.12 feet) to 1/4 corners east and west and 41.21 chains (2719.86 feet) south to East 1/4 corner of Sec. 3. He notes his corner falls 17 links north of a rock set by a neighbor and 71 links north of the government measure to the East 1/4 corner of Sec. 3.
- 1952 County Engineer records show a stone with hole was noted at the corner with the following reference ties.
- | | | |
|-----------|----|-------|
| 4" W. Oak | SE | 47.5 |
| 6" R. Oak | NE | 40.75 |
- 1967 County Surveyor's Record Book 2, pages 86 & 88 notes the following reference ties.
- | | | |
|-------------|----|------|
| 10" W. Oak | SE | 47.5 |
| Twin R. Oak | NE | 69.3 |
- 2001 On July 19, 2001 Westwood Professional Services, Inc. found a PK at the intersection of the centerline of County Road 56 (running north and south) and a tree line (from the east).
- 2005 Found PK Nail at approximate corner.
- 2009 The Benton County Surveyor's Office excavated and found a 8" x 8" granite monument in the north-south centerline of County Road 56 on a fence line to the east 34 feet south of the PK Nail found in 2005. The found stone measures within 0.5 feet of the 1916 distance to the east to another found stone; and measures 9 feet short of the 1916 distance for 1.5 miles south. The stone is consistent with other squared up granite stones found throughout Benton County that were set by Mr. Soderstrum. Since stone is consistent and the measurements fit the 1916 survey well, it is accepted as marking the corner position. A 1/2" x 14" iron pipe capped 19552 was set to mark the corner position.

County Coordinates Obtained by GPS:
NAD 83 (1996 Adjustment)
N- 196366.220
E- 467510.963