

# Benton County

## Community Health Assessment

### 2015-2019



## Table of Contents

<b>Introduction</b>	4
<b>Executive Summary</b>	6
<b>Ten Most Important Community Health Issues</b>	7
<b>Community Description</b>	9
Health Care System	9
Educational System	12
Religious System	14
Community Resources	14
Community Strengths	14
Human Services Programs	15
Local Public Health	16
<b>People &amp; Places</b>	18
Population	18
Age	18
Ethnicity/Race	19
Birth and Death Rates	20
Household Trends	21
Workforce	22
Housing	23
Radon	24
Youth Profile	26
<b>Healthy Living</b>	33
Prenatal Care & Infant Statistics	33
Breastfeeding	34
Safety (crash data, seatbelt use, distracted driving)	36
Alcohol Use	39
Tobacco Use	42
Substance Use	45
Sexual Activity/Transmitted Infections	48
<b>Disease &amp; Injury</b>	49
Leading Cause of Death	49
Diabetes	50
Hypertension	50
Cholesterol	51
Stroke	51
Heart Disease	52
Tuberculosis	53
COPD (Chronic Obstructive Pulmonary Disease)	53
Asthma	54
Cancer	55
Select/Tick-borne Disease	56
Behavioral Risk Factors (Obesity & Inactivity)	57
Suicide/Mental Health	63
Maltreatment	65
<b>Opportunities for Health</b>	68
Poverty	68
Financial Concerns	70
Unemployment	71
Food Support	72
Educational Attainment	72



Immunization Rates .....	74
Dentists .....	75
Mental Health Providers .....	76
Physicians .....	77
<b>Environmental Health</b> .....	78
Water Quality.....	78
Air Quality.....	79
Greenhouse Gas .....	80
Lead .....	80
Water Illness .....	81
Population Vulnerability Index .....	81
Climate Hazards Index.....	82
<b>Assessment Data Sources</b> .....	83

# Introduction

Minnesota's Community Health System provides the infrastructure for public health in Minnesota. It allows for state and local governments to partner and combine resources to service the community. Community Health Boards are established and supported by local government and made possible by the state Community Health Services (CHS) subsidy. Community Health Service activities are designed to protect and promote the health of the general population within a community health service area. These services emphasize the prevention of disease, injury, disability, and preventable death through the promotion of effective coordination and use of community resources, and by extending health services into the community.

The **Community Health Board** has the general responsibility for development and maintenance of an integrated system of community health services. **Benton County Board of Commissioners** function as the **Community Health Board** (oversees the development, implementation and evaluation of community health services according to Minnesota Statutes, Sections 14 <http://www.health.state.mn.us/divs/chs/mnchs.html> ).

## **Benton County Public Health Unit:**

Under the direction of the board and in accordance with the Local Public Health Act ([Minn. Statutes 145A.10](#) Subd. 5a. duties), *Benton County Public Health Unit* (Public Health Nursing, Health Educators, WIC and Support Staff), functions to:

- Address and implement essential local public health activities.
- Complete an assessment of community health needs.
- Seek community input on health issues and priorities.
- Establish local public health priorities based on identified community health needs.
- Determine the mechanisms by which the Community Health Board (CHB) will address local public health priorities to achieve statewide outcomes within the limits of available funding.

## **Local Public Health Assessment and Planning**

All Community Health Boards (CHBs) in Minnesota are required to engage in assessment and planning to yield local public health priorities and focus local resources.<sup>1</sup>

The four phases and five parts of Minnesota's Local Public Health Assessment and Planning (LPHAP) cycle were developed through a state-local partnership process and are based on recommendations from the State Community Health Services Advisory Committee (SCHSAC). The various elements of the LPHAP cycle allow CHBs to meet state requirements and are aligned with national public health standards from the Public Health Accreditation Board (PHAB).<sup>2</sup> CHBs will electronically report all five 2010-2014 cycle deliverables in March 2015.

## **ASSESS**

The LPHAP cycle includes 2 assessments:

**Organizational Assessment**-A self-study of the CHB's ability to meet the PHAB Standards and Measures; determines areas of strength and opportunities for improvement within the CHB.

**Community Health Assessment**-Similar to previous local public health assessments with an even greater emphasis on involving community partners to access data, provide various perspectives for analysis, present data findings, and commit to using data.

## **PRIORITIZE**

The organizational assessment yields Three Standards Most in Need of Improvement and the community health assessment yields the Ten Most Important Community Health Issues. Both sets of issues are arrived at through a prioritization process and are reported to MDH. The compiled priorities from these two assessments will

provide a snapshot of system capacity and community health needs across the state and also make it possible to make regional comparisons.

## **PLAN**

The three plans guide the work for the CHB and can be used to advocate for resources, work toward visible results, and demonstrated accountability and efficiency. National accreditation standards state these plans are related, and should connect with each other.

***Strategic Plan***-Internal to the organization, informed by priorities identified during the organizational assessment and the community health assessment, may include the organization's role and responsibilities for implementing the Community Health Improvement Plan.

***Community Health Improvement Plan***-This is the community's plan, not the CHB's plan for the community. Focus is larger than just the CHB; involves partners in processes of assessment, planning, and strategy development, as well as in strategy implementation.

***Quality Improvement Plan***-Informed by priorities identified through assessment, planning, and performance measurement, focuses on increasing efficiency and effectiveness in the short-term, identifies specific operations and areas within the organization in need of improvement, and supports the strategic plan.

<sup>1</sup>Statutory requirements for assessment and planning

<sup>2</sup>PHAB Standards and Measures version 1.0

## **The LPHAP is based on six areas of public health responsibility:**

- Assure a local public health infrastructure.
- Prevent the spread of infectious diseases.
- Promote healthy communities and healthy behaviors.
- Assure the quality and accessibility of health services.
- Protect against environmental health hazards.
- Prepare for and respond to disasters and assist communities in recovery.

Excerpts from the Minnesota Department of Health Local Public Health Assessment and Planning in Minnesota 2013, OPI

**“Public Health is what we, as a society, do collectively to assure the conditions in which (all) people can be healthy.”**

**Institute of Medicine (1988), *Future of Public Health***

## Executive Summary

The difficult task of identifying the health priorities for Benton County began back in 2012. Our first step was to partner with our surrounding county public health agencies, CentraCare Health System, and Albany Area Hospital and Medical Center to form a workgroup. We needed to learn more about the health status and health behaviors of the communities as well as their perceptions of health concerns. This workgroup contracted with Wilder Research and advised them on the development of the survey instrument and data collection methods. The information from this survey as well as data from many other sources has been compiled in this document.

The *County Health Rankings* measure the health of nearly all counties in the nation and rank them within states. The *Rankings* are compiled using county-level measures from a variety of national and state data sources. These measures are standardized and combined using scientifically-informed weights. Health outcomes in the *County Health Rankings* represent how healthy a county is. They measure two types of health outcomes: how long people live (length of life) and how healthy people feel while alive (quality of life). Health factors in the *County Health Rankings* represent what influences the health of a county. We measure four types of health factors: health behaviors, clinical care, social and economic, and physical environment factors. In turn, each of these factors is based on several measures. A fifth set of factors that influence health (genetics and biology) is not included in the *Rankings*.

When compared to the rest of MN counties for 2014, Benton County ranks 56 out of 87 in Health Outcomes and 44 out of 87 in Health Factors. This means that only 31 counties score worse and 55 score better than Benton County in Health Outcomes. Find the complete health rankings data at:

<http://www.countyhealthrankings.org/>

It has been noted throughout the community discussions that income, employment, education, access to healthcare and the physical environment are large determining factors to the health and wellbeing of our county citizens.

The data was taken to our community partners to assist us in looking at trends, discussing observations and sharing experiences. From there we began prioritizing county health issues and developing a Community Health Improvement Plan (CHIP). The completed document can be found at:

[http://www.co.benton.mn.us/Public\\_Health/Community\\_Health\\_Assessment.php](http://www.co.benton.mn.us/Public_Health/Community_Health_Assessment.php)

## **10 Most Important Community Health Issues**

### **Lack of Physical Exercise**

- Over half of Benton county residents report lack of physical exercise as a moderate/serious problem.
- Approximately 20% of adults surveyed reported 5 or more hours of screen time while not at work or school.
- Less than half of the adult population gets moderate exercise 5 times a week.

### **Poor parenting skills**

- Ranked #2 in overall moderate/serious concern on the Community Health Assessment.
- Teen birth rate has been higher than the state average since 1998.
- High number of child maltreatment reports and an increased rate of out of home placements.

### **Financial Stress**

- Ranked #1 in overall moderate/serious concern on the Community Health Assessment.
- Benton County poverty level is greater than the average in the state of MN, with the largest group under 18 years.
- Unemployment concerns are high; approximately 90% felt it was a problem on the Community Health Assessment.

### **Poor Nutrition**

- Approximately 70% reported that unhealthy eating and obesity for all ages is a problem.
- Greater than 60% report being overweight/obese with elevated BMIs (Body Mass Index).
- Approximately 21% of Benton County 9<sup>th</sup> graders are obese.



## Mental Health

- Women ranked Mental Health as more of a problem than men.
- Youth seriously considering suicide is high, up to approximately 22% for some age/gender groups.
- Over 50% of adults reported that Depression among adults is a moderate/serious problem.

## Tobacco Use

- High smoking rate noted; highest among the counties surveyed.
- National smoking average is 18.1%, Benton County rate is 20.6%.
- Tobacco use is high among low income and the 55-64 years age group.

## Alcohol Use

- 70% of the population consumed alcohol in the last 30 days.
- Drinking and driving ranked in the top 10 moderate/serious concerns.
- Over 60% report alcohol abuse among those over 21 as a problem.

## Drug Use

- Benton County reported the highest “some days” usage for drugs than other counties in the survey.
- County perception of drug use problem is with youth, biggest age group reporting drug use is 55-64 years.
- Men, lowest income, and highest income reported the most drug use.

## Safe Driving

- Over 80% reported making or answering phone calls while driving
- Fatality rates in Benton County are greater than the region and the state of MN.
- Benton County is at the top for serious injury in our region.

## Chronic Disease: Asthma

- 1 in 5 Benton County students report having asthma compared to 1 in 14 in MN.
- High rate of smoking during pregnancy, consistently higher rate than in MN since 1993.
- High rate of asthma related hospitalizations compared to the rate in MN.

# Community Description



## Community Defined

Benton County is located in Central Minnesota, approximately one-hour driving distance from the northern suburbs of Minneapolis. A portion of its western border combined with areas in Sherburne and Stearns County is the St. Cloud Metropolitan Statistical Area.

**Total Square Miles:** 408

261,120 total acres

**Population:** 39,214\*

**Young/Old Population:**

(24.5% < 18 y/o; 13.2% > 65 yrs y/o)

**Population Change 1990-2000:** ↑ 2.0 %

**Population Diversity:** 94.6% white

**Cities:** Foley, Gilman, Rice, Royalton (part), St. Cloud (part), Sartell (part) and Sauk Rapids. Most of the County's larger communities (St. Cloud, Sauk Rapids, Sartell, and Rice) are located on its western edge.

**The largest city:** Sauk Rapids, over 10,000 residents.

**Townships:** Alberta, Gilmanton, Glendorado, Graham, Granite Ledge, Langola, Mayhew Lake, Maywood, Minden, St. George and Watab.

**County Seat:** Foley, located near the center of the County.

**Neighboring Counties:** East - Mille Lacs County; South - Sherburne County; West - Stearns County; North - Morrison County.

**Transportation:** U.S. Highway 23 runs diagonally from southwest to northeast. Benton County is responsible for the road maintenance of 226 miles and the townships maintain another 288 miles of roads. The railroad runs along the western border as does U.S. Highway 10 and the Mississippi River.

**Land:** 82% agricultural

**Market Value:** appr. 3 billion

**Parks:** Benton Beach Park, Mayhew Lake Park, St. Regis Park and RoseAnna Beach

**Work Force:** trend increasing work force with aging population

**Industry:**

**Historical:** Agriculture and dairying, logging, lumbering, granite quarrying and manufacturing were active industries in the past. The timber and granite supplies have been depleted, so lumber and granite industries are no longer servicing.

**Current Leading Industry:** educational, health and social services

**Median Household Income:** \$46,035

**Below Poverty Level:** 14.6% population

**Home Ownership Rate:** 67.3%\*2000 data

**Information sources:** <http://www.co.benton.mn.us>  
<http://www.census.gov> [Benton County Assessor](#)

\* 2011 estimation



Benton County was one of the original nine counties established by the territorial legislature in 1849. The county was named in honor of Thomas Hart Benton, a senator from St. Louis, Missouri, who worked diligently to have Congress enact the Homestead Act.

When the first explorers came to the county, it was inhabited with Sioux and Chippewa Indian tribes. David Gilman established the first pioneer settlement in 1848 in Watab.

He established a trading post. Yankees and immigrants from several European countries settled in the county in the nineteenth century. The most predominant ethnic group was the Germans, who developed the area around Duelm and Mayhew Lake. The second largest ethnic group was the Polish, around the Gilman area.

Sauk Rapids, one of the five original townships created in Benton County in 1858, was named for the rapids of the Mississippi River near downtown. For several years the village was the northernmost point of steamboat navigation on the Mississippi for passengers coming up from the Twin Cities.

The first county seat was in Sauk Rapids. It was moved to Watab Township in 1856 and then back to Sauk Rapids in 1859. In 1901, an election was held that moved the seat to Foley, where it remains today, along with the courthouse built in 1902 and 1903.

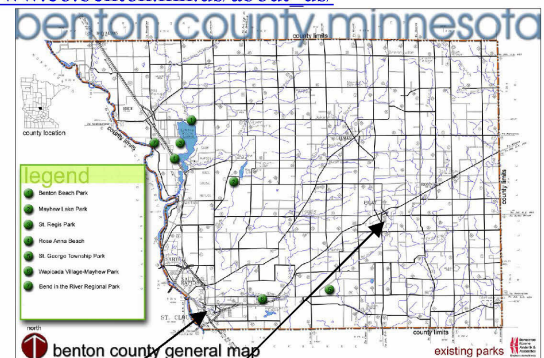
Historical attractions in the county include Peace Rock, a large granite outcropping along the Mississippi River in Watab Township. It was named Peace Rock in 1832 by Henry Schoolcraft when he charted the Mississippi, because it marked the 1825 boundary between the Chippewa territory to the north and the Sioux lands to the south.

The Church of Saints Peter and Paul in Gilman is a highly visible architectural landmark of Polish influence in the community. It has been nominated to the National Register of Historic Places.

The Benton County Museum, located at 218 First Street North in Sauk Rapids, depicts the story of the development of Benton County through the use of artifacts, pictures and printed materials.

Festivals and celebrations in and around Benton County include the Benton County Fair, Granite City Days (St. Cloud), Mississippi Music Fest (St. Cloud), Rapids River Food Fest (Sauk Rapids), Sartell Summer Fest (Sartell), Rice Days, Foley Fun Days and Gilman Days.

Information obtained [online] at: [http://www.co.benton.mn.us/about\\_us/](http://www.co.benton.mn.us/about_us/)



Most populated area of Benton County includes the city of Sauk Rapids and small portions of the cities of St. Cloud and Sartell

City of Foley = county seat

● 7 County Park location



# Health Care System

## EMS

There are 2 ambulance agencies that service Benton County residents: Gold Cross and North Memorial Ambulance Services. North Memorial Ambulance is located in Princeton (Mille Lacs County) and Gold Cross is located in St. Cloud (Stearns County). Gold Cross does house an ambulance and crew at the Sauk Rapids Fire Station. Scene response times vary from 5-20 min. depending on the location within Benton County. Life Link III Air Ambulance, stationed at the St. Cloud Hospital (Stearns County) also services the area.

First responders in the area include Benton County Sheriff, local police and volunteer first responders within the cities of Foley, Rice, Sartell and Sauk Rapids fire departments.

## Hospitals

There are no hospitals located within Benton County

### **Neighboring counties:**

**St. Cloud Hospital-** located in St. Cloud (Stearns County) is the largest health care facility in the region, serving a population of 560,000 people in a 12 county area of Central MN. The medical staff includes more than 300 physicians and 3,000 employees.

**VA Medical Center-** St. Cloud (Stearns County)

**Fairview Northland Hospital-** Princeton (Sherburne County)

**St. Gabriel's Hospital-** Little Falls (Morrison County)

## Clinics

**Benton County:** one medical clinic, Foley Medical Center (1 MD & 1 CNP)

**St. Cloud Area:** numerous clinics of varying specialties including:

- Catholic Charities: Caritas Family Services
- CentraCare Health System Clinics –numerous locations
- Central MN Mental Health Center
- HealthPartners Central Minnesota Clinics
- Lutheran Social Service Counseling and Therapy
- Midwest Occupational Medicine
- St. Cloud Medical Group
- Williams/Integracare Clinic

### Nursing Homes

HFID	Facility	Number of Beds
00627	<b>Name:</b> COUNTRY MANOR HC & REHAB CTR <b>Address:</b> 520 First Street NE Sartell MN 56377	165
00629	<b>Name:</b> HERITAGE of FOLEY NURSING CENTER <b>Address:</b> 253 Pine St. Foley MN 56329	89
00023	<b>Name:</b> GOOD SHEPHERD LUTHERAN HOME <b>Address:</b> 1115 4 <sup>th</sup> Ave N Sauk Rapids MN 56379	162
<b>Total</b>	<b>Benton County</b>	<b>416</b>
<b>Total</b>	<b>State of Minnesota</b>	<b>35,207</b>

### Home Health Care and Hospice

Provider Information
<b>Name:</b> ACCESS INFUSION HEALTHCARE LLC <b>Address:</b> 16 12TH STREET SOUTH SAUK RAPIDS MN 56379
<b>Name:</b> CHERRYWOOD ADVANCED LIVING <b>Address:</b> 1685 4 <sup>th</sup> AVENUE NORTH MN 56379
<b>Name:</b> SUPPORTING HANDS <b>Address:</b> 1269 2 <sup>nd</sup> STREET NORTH SUITE 200 SAUK RAPIDS MN 56379
<b>Name:</b> ALL GOOD HOME CARE <b>Address:</b> 9250 LAKEWOOD SHORE RD NW RICE MN 56367
<b>Name:</b> COUNTRY MANOR EXTENDED SERV <b>Address:</b> 520 FIRST STREET NE SARTELL MN 56377
<b>Name:</b> GENERATIONS HOME CARE <b>Address:</b> 817 5 <sup>th</sup> AVENUE N SAUK RAPIDS MN 56379
<b>Name:</b> GOOD SHEPHERD HOME HEALTH CARE <b>Address:</b> 1115 FOURTH AVENUE NORTH SAUK RAPIDS MN 56379
<b>Name:</b> HEARTLAND HOSPICE <b>Address:</b> 605 FRANKLIN AVENUE NORTHEAST ST CLOUD MN 56304
<b>Name:</b> HERITAGE HOME HEALTH & HOSPICE <b>Address:</b> 152 NORMAN AVENUE SOUTH FOLEY MN 56329
<b>Name:</b> SPECTRUM HOMECARE <b>Address:</b> 22 WILSON AVE NE #204 ST CLOUD MN 56302
<b>Name:</b> WALGREENS INFUSION SERVICES <b>Address:</b> 10000S BENTON DRIVE STE 405 SAUK RAPIDS MN 56379

### Housing with Services/Supervised Living Facility

<b>Provider Information</b>	
<b>Name:</b> ACCESS INFUSION HEALTHCARE LLC	<b>Address:</b> 16 12TH STREET SOUTH SAUK RAPIDS MN 56379
<b>Name:</b> CHERRYWOOD ADVANCED LIVING	<b>Address:</b> 1685 4 <sup>th</sup> AVENUE NORTH MN 56379
<b>Name:</b> STERLING HOUSE OF SAUK RAPIDS	<b>Address:</b> 1325 SUMMIT AVENUE NORTH SAUK RAPIDS MN 56379
<b>Name:</b> COUNTRY MANOR ASSISTED LIVING	<b>Address:</b> 520 FIRST STREET NE SARTELL MN 56377
<b>Name:</b> ST CLOUD CAREFREE LIVING	<b>Address:</b> 1225 DIVISION STREET EAST ST CLOUD MN 56304
<b>Name:</b> GOOD SHEPHERD COTTAGES	<b>Address:</b> 307 11TH STREET NORTH SAUK RAPIDS MN 56379
<b>Name:</b> GOOD SHEPHERD HOMES	<b>Address:</b> 1211 4 <sup>TH</sup> AVENUE NORTH SAUK RAPIDS MN 56379
<b>Name:</b> GOOD SHEPHERD ASSISTED LIVING	<b>Address:</b> 1115 4TH AVENUE NORTH SAUK RAPIDS MN 56379
<b>Name:</b> STERLING PARK RIDGEVIEW	<b>Address:</b> 1009 10 <sup>TH</sup> AVENUE NORTHEAST SAUK RAPIDS MN 56379
<b>Name:</b> SHEPHERD COURT APARTMENTS	<b>Address:</b> 330 13 <sup>th</sup> STREET NORTH SAUK RAPIDS MN 56379
<b>Name:</b> SHEPHERD OAK APARTMENTS	<b>Address:</b> 310 13 <sup>th</sup> STREET NORTH SAUK RAPIDS MN 56379
<b>Name:</b> SHEPHERD OAK WEST APARTMENTS	<b>Address:</b> 220 13 <sup>th</sup> STREET NORTH SAUK RAPIDS MN 56379
<b>Name:</b> WAITE PROPERTIES	<b>Address:</b> 817 FIFTH AVENUE NORTH SAUK RAPIDS MN 56379
<b>Name:</b> THE COUNTRY VILLA	<b>Address:</b> 520 FIRST STREET NE SARTELL MN 56377
<b>Name:</b> HERITAGE POINT	<b>Address:</b> 104 NORMAN AVENUE SOUTH FOLEY MN 56329
<b>Name:</b> HERITAGE PLACE	<b>Address:</b> 120 NORMAN AVENUE SOUTH FOLEY MN 56329
<b>Name:</b> WELSH PLACE	<b>Address:</b> 902 15 <sup>th</sup> STREET NORTHEAST SAUK RAPIDS MN 56379
<b>Name:</b> JOURNEY HOME	<b>Address:</b> 1485 10 <sup>th</sup> AVENUE NORTHEAST SAUK RAPIDS MN 56379

# Educational System

Benton County Located		
School District	Phone	Web Site
Foley School District 51	(320) 968-7175	<a href="http://www.foley.k12.mn.us">http://www.foley.k12.mn.us</a>
St. Cloud Area School District 742	(320) 253-9333	<a href="http://www.isd742.org">http://www.isd742.org</a>
Sauk Rapids/Rice School District 47	(320) 253-4703	<a href="http://www.isd47.org">http://www.isd47.org</a>
Sartell School District 748	(320) 253-2440	<a href="http://www.sartell.k12.mn.us">http://www.sartell.k12.mn.us</a>
St. Cloud and Greater Area		
Post-Secondary Information	Phone	Web Site
St. Cloud State University	(320) 255-0121	<a href="http://www.stcloudstate.edu">www.stcloudstate.edu</a>
St. Cloud Technical College	(800) 222-1009	<a href="http://www.sctcweb.tec.mn.us">www.sctcweb.tec.mn.us</a>
St. John's University	(320) 363-2011	<a href="http://www.csbsju.edu">www.csbsju.edu</a>
College of St. Benedict	(320) 363-5011	<a href="http://www.csbsju.edu">www.csbsju.edu</a>
Rasmussen College	(320) 251-5600	<a href="http://www.rasmussen.edu">www.rasmussen.edu</a>
Regency Beauty Academy	(320) 251-0500	N/A
Model College of Hair Design	(320) 253-4222	N/A

## Foley and Sauk Rapids School Districts Two main district located in Benton County

Benton County Public School District Enrollment Trends						
Grade	Sauk Rapids School Dist.			Foley School Dist.		
	<u>2013-14</u>	<u>2007-08</u>	<u>2000-01</u>	<u>2013-14</u>	<u>2007-08</u>	<u>2000-01</u>
PK	43.71	52	30	-	24	18
KG	317	282	238	134	107	102
1	314	290	240	143	147	120
2	329	284	212	146	139	105
3	287	261	231	139	131	125
4	284	292	240	134	107	121
5	324	266	236	147	113	130
6	307	248	266	114	126	144
7	322	295	327	180	127	142
8	346	297	288	154	137	148
9	310	298	316	143	127	162
10	318	282	312	117	138	138
11	285	324	274	131*	125	150
12	241	293	256	110*	127	144
<b>Total</b>	<b>4027</b>	<b>3765</b>	<b>3466</b>	<b>1792</b>	<b>1675</b>	<b>1749</b>

\*ALC & PSEO students adjusted for 9<sup>th</sup>, 10<sup>th</sup>, 11<sup>th</sup>, & 12<sup>th</sup> Grade Enrollments

### **Community Education**

Community Education classes are offered to Benton County residents through Foley and Sauk Rapids-Rice School Districts as well as St. Cloud Community Education courses. Community Education Services provides opportunities for people of all ages to participate in special interest classes, attend activities, or use the school buildings and facilities. Flyers and brochures are sent to households to inform residents about upcoming classes and/or events.

The activities and classes offered are:

- Preschool classes
- Early childhood/Family Ed
- Adult classes
- Youth classes
- Indoor Recreation
- Trips and special events
- Summer theatre
- Family Fun Festival
- Summer Athletic camps
- Senior Citizens classes
- Summer Recreation
- General Interest classes
- Health, Wellness and Fitness

## **Religious Systems**

Central Minnesota is noted to be mainly Christian in religious affiliation, predominantly Roman Catholic, based on its ancestry (German/Polish). However, there are a variety of church denominations or affiliations located throughout the county. Several worship centers are located within the St. Cloud Metropolitan Statistical Area as well as throughout Benton County.

Benton County Human Services (including public health) partners with a number of religious based organizations in the St. Cloud area to deliver services. Two main partner organizations are: Catholic Charities and Lutheran Social Services. Other organizations such as the CROSS Center, Youth for Christ, and Faith in Action are some examples of faith-based organizations working in Benton County to provide services.

## **Community Resources**

Numerous Non-religious Community and Volunteer Organizations including:

- Lions Club
- 4-H
- Kiwanis
- American Legion
- Veterans of Foreign Wars
- Women of Today
- C.A.R.E
- United Way 2-1-1: referral to several types of service agencies and support group listings <http://www.211.org/ReferWeb/MainForm.aspx>

## **Community Strengths**

- Continued growth in market value and population
- Strong, increasing working population
- Collaboration between public service agencies and local community organizations

# Human Services

The mission of Benton County Human Services is to preserve and maintain the health, safety, dignity and well being of the residents of Benton County while promoting the right to "self determination" and "self sufficiency".

- Adult Services Department: Benton County's Adult Services Units and staff provide services to individuals who may have issues related to aging/long term care and community based services, physical and/or developmental disabilities, mental health, chemical dependency or adult protection. Services may include, but are not limited to, information and referral, long term care consultation and/or other screenings and assessments related to services, eligibility determinations, services access and funding, case management/care coordination, and adult protective services.
- Family & Child Services: Benton County embraces Federal and State initiatives to provide safety, permanency and well-being to children. The Agency designs and delivers services which will strengthen and assist families. Family preservation services are provided to allow children to safely remain in their home and community. When this is not possible, and as a last resort, out of home placement of children may be necessary. When this occurs, reunification is the primary goal. Social workers assist families in identifying their strengths and needs. They assist in locating resources as close to home as possible. The Department may purchase services or directly provide services when a need is determined. A fee based income may be set.
- Child Support: The Federal Government mandates that states provide child support services to ensure that all children receive the financial support they deserve from both parents. In Minnesota these services are administered by local county governments. In Benton County child support services are available through Benton County Human Services. The Child Support Unit in Benton County collects and distributes more than \$4 million annually.
- Daycare/Foster Care Information:

## **Benton County Human Services Licensed Child Care List (Online)**

[http://www.co.benton.mn.us/Human\\_Services/Daycare\\_Providers.php](http://www.co.benton.mn.us/Human_Services/Daycare_Providers.php)

Foley Area (Foley, Foreston, Gilman, Duelm): 31 providers  
Rice, Little Rock, Royalton Area: 27 providers  
Sartell Area: 5 providers  
East St. Cloud: 7 providers  
Sauk Rapids Area: 74 providers

- Financial Services: The Financial Assistance Unit determines initial and ongoing eligibility for the Health Care, Cash, Food Support and Emergency Assistance Programs.

# **Local Public Health**

**Mission:** To promote, protect and improve the health of the Benton County Community through Advocacy, Education and Collaboration.

**Vision:** To improve the quality of life for the Benton County Community.

## **Public Health Responsibilities**

### **Infrastructure**

- Maintain a local governance structure for public health, consistent with state statutes.
- Assess and monitor community health needs and assets on an ongoing basis
- Identify community health and prevention priorities - report to MDH progress
- Develop an action plan
- Convene community members to build community collaborations
- Personnel requirements - staffing

### **Healthy Communities**

- Health Education
- Follow Along Program
- Nurse Home Visiting to Assess, Monitor & Educate (TANF & MCH)
- Child Passenger Safety
- C&TC (Child & Teen Checkup) Outreach
- WIC (Women, Infants & Children Nutrition Program)
- SHIP (Statewide Health Improvement Plan)

### **Communicable Disease Prevention and Control**

- Refugee Health
- Tuberculosis Follow Up
- Reportable Disease
- Hepatitis B Follow Up
- Immunizations/Schedules



## **Environmental Health**

- **Public Health Nuisance Control**

By definition, "public health nuisance" means any activity or failure to act that adversely affects the public health. This includes response to nuisance reports and appropriate action according to the defined process for removal and abatement of public health nuisances prescribed in section 145A.08.

Public health nuisances may involve some of the following:

- Harborage for rodents and insects caused by abandoned vehicles/equipment
  - Animal carcasses
  - Accumulations of rotting and non-rotting garbage
  - Raw sewage spills
  - Animal control cases
- Elevated Blood Lead Follow Up
  - Radon kits and education
  - Resource for Air, Water & Home Environment

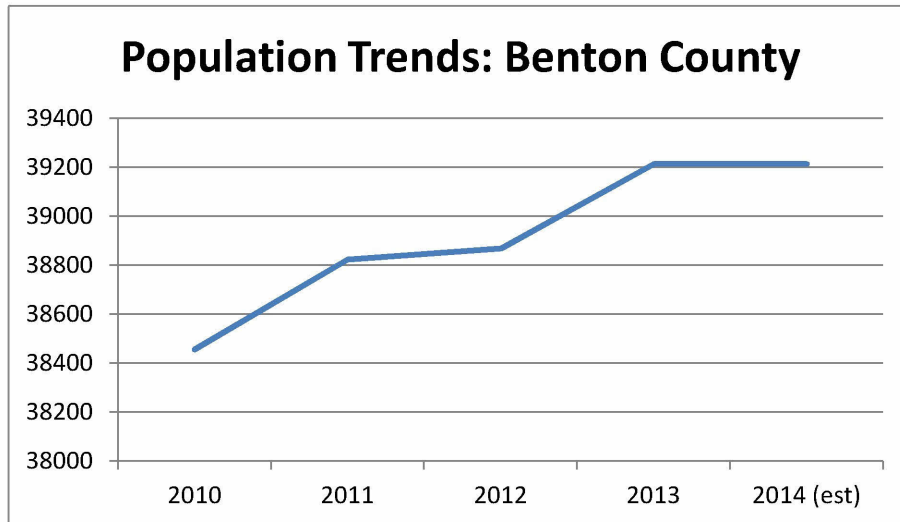
## **Disaster Preparedness**

- Collaborate with community to address potential health issues
- Work with families to help prepare them for possible emergencies.
- Partner with school administrators and nurses on emergency preparedness issues.
- Team with community partners to ensure rapid detection of disease patterns and timely dissemination of accurate information.
- Provide training opportunities and educational resources for health care professionals and others in our community.
- Family Communications Plan (Emergency Plan)
- Works with Emergency Management Department

## **Health Care Access**

- Collaborative with Central MN Children's Mental Health
- Referrals made during - CHIP clinics, WIC clinics, MCH visits, Follow Along Program tracking

# People & Places



Annual Estimates of the Resident Population: April 1, 2010 to July 1, 2013

Source: U.S. Census Bureau, Population Division

Release Dates: For the United States, regions, divisions, states, and Puerto Rico Commonwealth, December 2013. For counties, municipios, metropolitan statistical areas, micropolitan statistical areas, metropolitan divisions, and combined statistical areas, March 2014. For Cities and Towns (Incorporated Places and Minor Civil Divisions), May 2014

		Age (years)											
		2008		2009		2010		2011		2012		2013	
		total	%	total	%	total	%	total	%	total	%	total	%
<b>MN</b>	<b>Total</b>	<b>5,220,393</b>		<b>5,266,214</b>		<b>5,303,925</b>		<b>5,344,861</b>		<b>5,379,139</b>		<b>5,420,380</b>	
	0-17	1,254,644	<b>24.0%</b>	1,260,795	<b>23.9%</b>	1,284,063	<b>24.2%</b>	1,277,526	<b>23.9%</b>	1,424,771	<b>26.5%</b>	1,279,209	<b>23.6%</b>
	18-64	3,315,230	<b>63.5%</b>	3,334,362	<b>63.3%</b>	3,336,741	<b>62.9%</b>	3,365,567	<b>63.0%</b>	3,222,104	<b>59.9%</b>	3,387,737	<b>62.5%</b>
	65+	650,519	<b>12.5%</b>	671,055	<b>20.1%</b>	683,121	<b>12.9%</b>	701,768	<b>13.1%</b>	729,767	<b>13.6%</b>	753,432	<b>13.9%</b>
<b>Benton</b>	<b>Total</b>	<b>39,878</b>		<b>40,193</b>		<b>38,451</b>		<b>38,671</b>		<b>38,865</b>		<b>39,214</b>	
	0-17	9,974	<b>25.0%</b>	9,830	<b>24.5%</b>	9,500	<b>24.7%</b>	9,539	<b>24.7%</b>	10,308	<b>26.5%</b>	9,608	<b>24.5%</b>
	18-64	25,783	<b>64.7%</b>	26,252	<b>65.3%</b>	24,393	<b>63.4%</b>	24,549	<b>63.5%</b>	23,586	<b>60.7%</b>	24,430	<b>62.3%</b>
	65+	4,121	<b>10.3%</b>	4,111	<b>10.2%</b>	4,558	<b>11.9%</b>	4,583	<b>11.9%</b>	4,971	<b>12.8%</b>	5,176	<b>13.2%</b>
Original Source: U.S. Census ( <a href="http://www.census.gov">www.census.gov</a> )													
Local Source: MN Center for Health Statistics (MN County Health Tables, Demographics Section)													
<b>link</b>	<a href="http://www.health.state.mn.us/divs/chs/countytables/index.htm">http://www.health.state.mn.us/divs/chs/countytables/index.htm</a>												

		Race and ethnicity									
		2009		2010		2011		2012		2013	
		total	%	total	%	total	%	total	%	total	%
MN	total	5,266,214		5,303,925		5,344,861		5,379,139		5,420,380	
	white	4,664,703	88.6%	4,524,062	85.3%	4,645,546	86.9%	4,654,134	86.5%	4,672,368	86.2%
	american Indian/alaskan native	66,640	1.3%	60,916	1.1%	286,301	5.4%	68,961	1.3%	70,465	1.3%
	black/african american	249,909	4.7%	274,412	5.2%	68,412	1.3%	297,962	5.5%	308,962	5.7%
	asian/pacific islander	202,143	3.8%	216,390	4.1%	228,506	4.3%	238,326	4.4%	249,337	4.6%
	two or more races	82,819	1.6%	125,145	2.4%	116,096	2.2%	119,756	2.2%	124,669	2.3%
	ethnicity - hispanic/latino (any race)	226,384	4.3%	250,258	4.7%	259,297	4.9%	264,359	4.9%	271,019	5.0%
Benton	total	40,193		38,451		38,671		38,865		39,214	
	white	38,194	95.0%	36,348	94.5%	36,111	93.4%	36,800	94.7%	37,096	94.6%
	american Indian/alaskan native	681	1.7%	749	1.9%	805	2.1%	164	0.4%	196	0.5%
	black/african american	242	0.6%	159	0.4%	199	0.5%	875	2.3%	863	2.2%
	asian/pacific islander	556	1.4%	429	1.1%	443	1.1%	434	1.1%	431	1.1%
	two or more races	520	1.3%	615	1.6%	613	1.6%	593	1.5%	627	1.6%
	ethnicity - hispanic/latino (any race)	564	1.4%	632	1.6%	689	1.8%	687	1.8%	784	2.0%
Original Source: U.S. Census (www.census.gov)											
Local Source: MN Center for Health Statistics (MN County Health Tables, Demographics Section)											
Link	<a href="http://www.health.state.mn.us/divs/chs/countytables/index.htm">http://www.health.state.mn.us/divs/chs/countytables/index.htm</a>										

### Benton County Demographics

	Selected Indicators	2009	2010	2011	2012	2013
Benton	Elderly (age 65+) Dependency Ratio*	14.8	17.6	17.6	19.2	20.0
	Child (under age 15) Dependency Ratio*	31.0	31.0	30.9	30.9	31.2
	Total Dependency (under 15, 65+) Ratio*	44.7	48.7	48.6	50.1	51.2
Minnesota	Elderly (age 65+) Dependency Ratio*	18.9	19.2	19.6	20.3	21.0
	Child (under age 15) Dependency Ratio*	29.9	29.6	29.6	29.6	29.6
	Total Dependency (under 15, 65+) Ratio*	48.4	49.1	49.2	49.9	50.6

\*Ratio per 100 people age 15-64

Minnesota Center for Health Statistics, Minnesota Department of Health

		Number of deaths and rate (age-adjusted per 100,000 population)			
		1993-1997	1998-2002	2003-2007	2008-2012
<b>MN</b>	<b>number of deaths</b>	184,221	189,162	186,162	194,908
	<b>death rate</b>	<b>806.4</b>	<b>761</b>	<b>682.4</b>	<b>657.7</b>
<b>Benton</b>	<b>number of deaths</b>	1,371	1,547	1,568	1,554
	<b>death rate</b>	<b>821</b>	<b>908.6</b>	<b>876.5</b>	<b>741.4</b>
<b>Original source</b>		MN Center for Health Statistics ( <i>MN State, County, and Community Health Board Vital Statistics Trend Report, 1991-2010</i> , Mortality Section)			
<b>Link</b>		<a href="http://www.health.state.mn.us/divs/chs/trends/index.html">http://www.health.state.mn.us/divs/chs/trends/index.html</a>			

		Number of births and rate (per 1,000 population)				
		1992-1996	1997-2001	2001-2006	2007-2011	2008-2012
<b>Minnesota</b>	<b>number of births</b>	321,455	329,719	353,139	353,497	348,605
	<b>birth rate</b>	<b>14.1</b>	<b>13.7</b>	<b>13.9</b>	<b>13.4</b>	<b>13.1</b>
<b>Benton</b>	<b>number of births</b>	2,438	2,594	2,960	2,941	2,907
	<b>birth rate</b>	<b>15</b>	<b>15.1</b>	<b>15.7</b>	<b>15.0</b>	<b>14.8</b>
<b>Original source</b>		MN Center for Health Statistics ( <i>MN State, County, and Community Health Board Vital Statistics Trend Report, 1991-2010</i> , Natality Section)				
<b>Link</b>		<a href="http://www.health.state.mn.us/divs/chs/trends/index.html">http://www.health.state.mn.us/divs/chs/trends/index.html</a>				

	Teen birth rate (per 1,000) 15-19 year old females			
	1993-1997	1998-2002	2003-2007	2008-2012
<b>MN</b>	33.0	29.0	27.1	22.4
<b>Benton</b>	31.6	40.0	34.5	26.6

original source Minnesota Department of Health, Center for Health Statistics, [www.health.state.mn.us/divs/chs](http://www.health.state.mn.us/divs/chs)

local source Minnesota Department of Health, Center for Health Statistics (*Minnesota State, County, and Community Health Board Vital Statistics Trends, 1991-2010*, Natality Section)

link <http://www.health.state.mn.us/divs/chs/trends/index.html>

<b>Household Estimates</b>					
	<b>2008</b>	<b>2009</b>	<b>2010</b>	<b>2011</b>	<b>2012</b>
<b>MN</b>	20995574	2108843	2087227	2101295	2110877
<b>Benton</b>	15611	15741	15079	15155	15287

<http://www.health.state.mn.us/divs/chs/Trends/index.html>

---

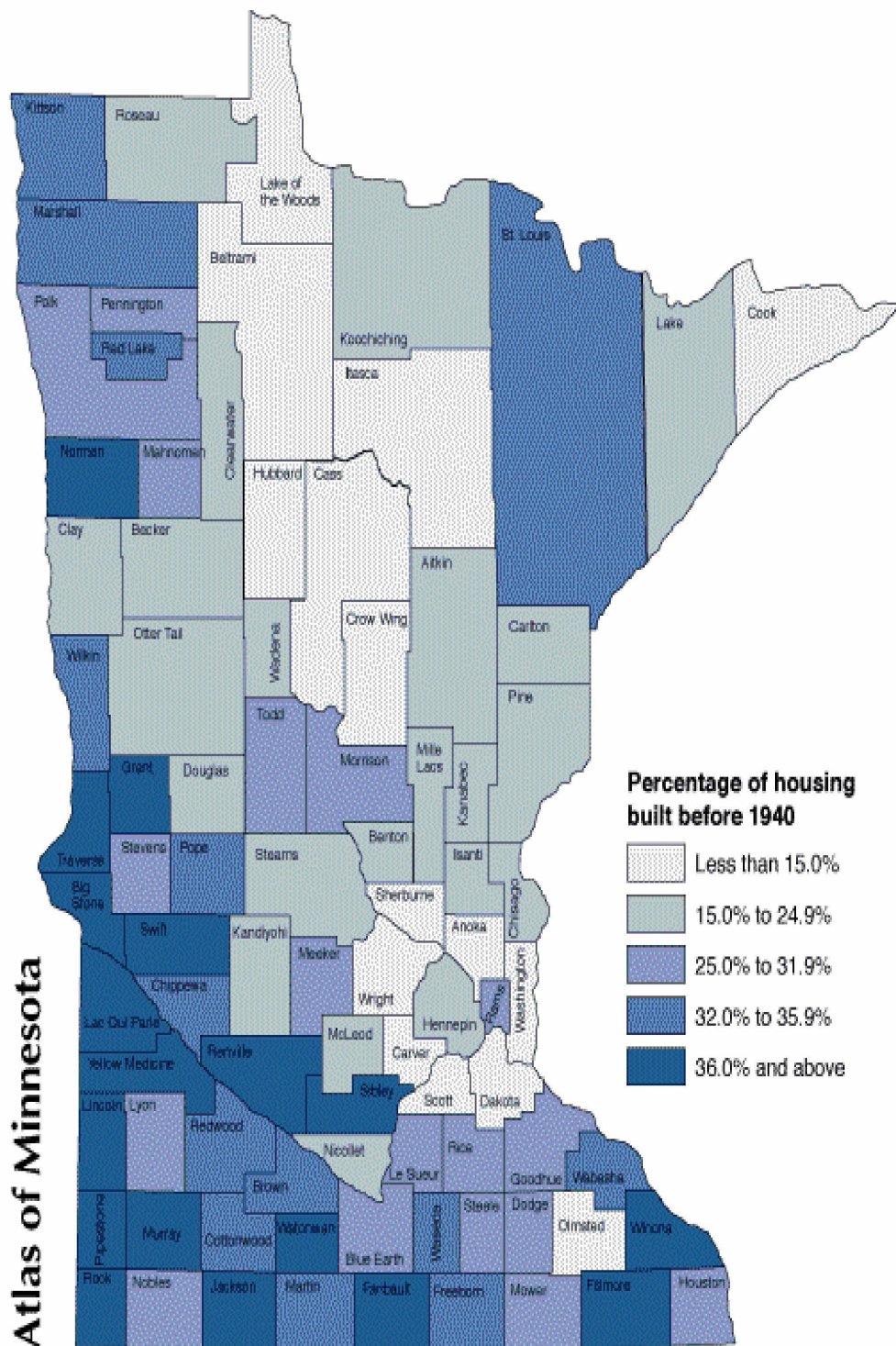
	<b>Percent (%) of children &lt;18 living in single parent households</b>		
	<b>2010</b>	<b>2011</b>	<b>2012</b>
<b>MN</b>	24.7	24.9	25.3
<b>Benton</b>	22.9	27.6	27.3
<b>Original source</b>	U.S. Census, 2006-2010 America Community Survey (ACS)		
<b>local source</b>	MN Center for Health Statistics, MN County Health Tables (Demographics Section, Table 6)		
<b>Link</b>	<a href="http://www.health.state.mn.us/divs/chs/countytables/">http://www.health.state.mn.us/divs/chs/countytables/</a>		

# Work Force

Minnesota Labor Force Projections - Rates and Totals, 2010-2045								
Minnesota State Demographic Center								
Megan Dayton								
September 2014								
RATES								
TOTAL	2011**	2015	2020	2025	2030	2035	2040	2045
Age16toAge19	50.58%	48.95%	46.95%	45.05%	43.22%	41.47%	39.79%	38.17%
Age20toAge21	76.66%	75.89%	74.96%	74.04%	73.13%	72.23%	71.34%	70.47%
Age22toAge24	84.42%	84.38%	84.33%	84.27%	84.23%	84.19%	84.15%	84.11%
Age25toAge29	87.71%	87.82%	88.03%	88.27%	88.55%	88.88%	89.26%	89.68%
Age30toAge34	87.78%	88.01%	88.35%	88.76%	89.12%	89.49%	89.86%	90.23%
Age35toAge44	87.76%	87.74%	87.66%	87.55%	87.49%	87.45%	87.39%	87.34%
Age45toAge54	88.09%	88.37%	88.71%	89.08%	89.42%	89.75%	90.12%	90.49%
Age55toAge59	80.86%	82.39%	84.14%	85.71%	87.11%	88.33%	89.37%	90.24%
Age60toAge61	71.11%	73.28%	75.66%	77.63%	79.23%	80.45%	81.18%	81.76%
Age62toAge64	54.72%	56.60%	58.95%	61.32%	63.70%	66.08%	68.47%	70.90%
Age65toAge69	32.38%	33.91%	35.80%	37.68%	39.56%	41.44%	43.32%	45.22%
Age70toAge74	18.98%	19.94%	21.14%	22.32%	23.52%	24.74%	25.97%	27.23%
Age75plus	5.82%	5.87%	5.97%	6.06%	6.12%	6.16%	6.19%	6.22%

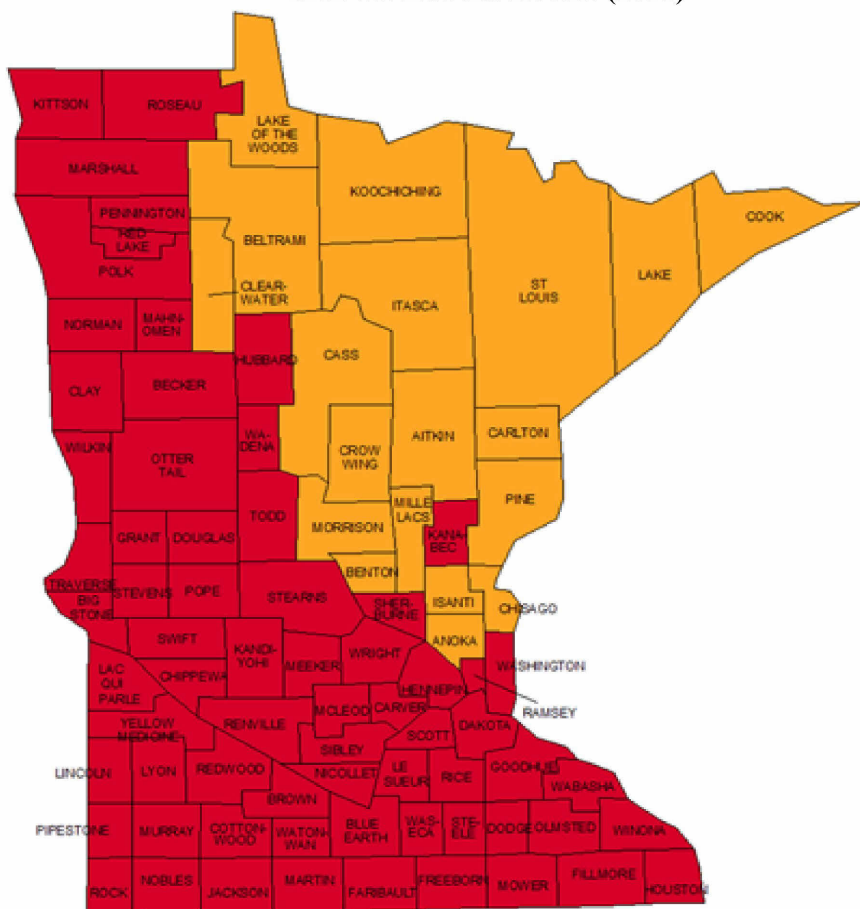
TOTALS								
Total	2011**	2015	2020	2025	2030	2035	2040	2045
Age16toAge19	147,115	139,938	142,548	147,682	153,866	153,724	150,800	146,047
Age20toAge21	109,934	99,286	96,266	102,465	103,092	111,774	113,532	114,401
Age22toAge24	178,454	175,043	153,922	153,055	164,445	175,292	182,355	186,513
Age25toAge29	330,039	316,896	300,086	277,234	286,505	301,228	325,934	337,789
Age30toAge34	313,549	343,975	347,636	341,118	326,393	341,586	358,439	383,322
Age35toAge44	588,714	584,913	637,363	675,593	667,747	641,061	635,637	661,145
Age45toAge54	706,128	661,860	593,457	586,857	643,042	683,925	676,948	649,970
Age55toAge59	291,767	322,787	326,080	288,587	268,997	287,225	326,422	329,623
Age60toAge61	89,577	103,682	116,780	110,406	101,733	89,871	103,417	113,355
Age62toAge64	95,491	109,519	127,228	135,337	116,445	112,394	115,635	138,651
Age65toAge69	67,731	88,949	110,069	126,929	129,168	113,785	106,148	116,575
Age70toAge74	29,987	37,233	50,356	61,988	71,181	71,901	62,750	58,088
Age75plus	19,365	20,845	23,784	28,793	34,587	40,019	43,014	41,920








Data source:  
U.S. Census Bureau  
© Center for Rural Policy and Development

## RADON ZONES IN MN (2011)



	<b>Zone 1</b>	<b>Highest Potential</b>
	<b>Zone 2</b>	<b>Moderate Potential</b>
	<b>Zone 3</b>	<b>Low Potential</b>

Original source

U.S. Environmental Protection Agency

local source

Minnesota Department of Health, Center for Health Statistics

link

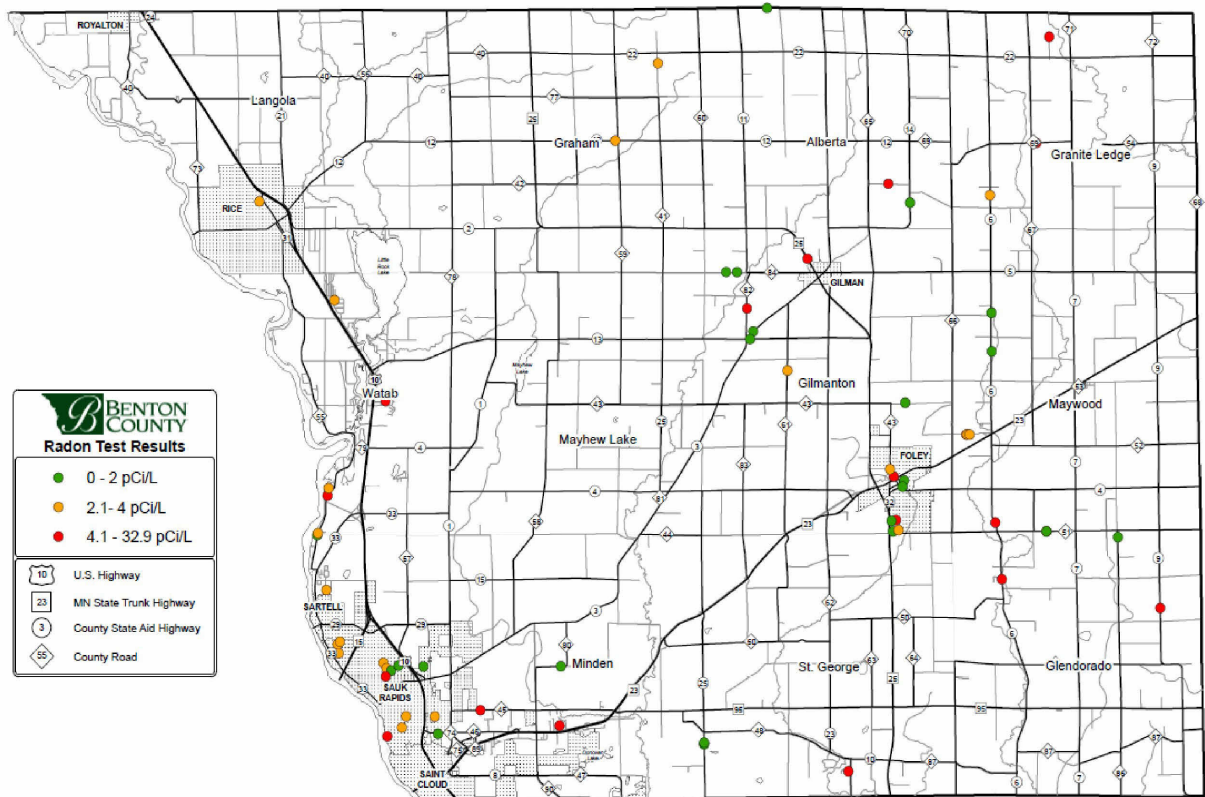
<http://www.epa.gov/radon/states/minnesota.html>

Zone 1 counties have a predicted average indoor radon screening level greater than 4 pCi/L (picocuries per liter) (red zones)

Zone 2 counties have a predicted average indoor radon screening level between 2 and 4 pCi/L (orange zones)

Zone 3 counties have a predicted average indoor radon screening level less than 2 pCi/L (yellow zones)





## Youth Profiles

		Feels safe in schools and neighborhood (strongly agrees or agrees) (9th graders) (percent)			
		2004	2007	2010	2013
MN	<b>schools</b>	90.0	91.0	93.0	91.0
	<b>neighborhood</b>	N/A	94.0	94.0	95.0
Benton	<b>schools</b>	91.5	92.0	94.5	94.5
	<b>neighborhood</b>	N/A	95.0	95.5	94.5
<b>source</b>	Minnesota Department of Health, Center for Health Statistics, Minnesota Student Survey (School section)				
<b>link</b>	<a href="http://www.health.state.mn.us/divs/chs/mss/">http://www.health.state.mn.us/divs/chs/mss/</a>				
<b>notes</b>	Survey question: How much do you agree or disagree with the following statements? I feel safe at school; answers: Strongly agree, agree, disagree, strongly disagree				
	Survey question: How much do you agree or disagree with the following statements? I feel safe in my neighborhood; answers: strongly agree, agree, disagree, strongly disagree				
	Feels safe in neighborhood question only asked in 2007 and 2010				
	Because the survey separated by county is split by gender and 2 answers (agree and strongly agree) calculations were done as follows:				
	The sum of the percent of all males who answered "Agree" or "Strongly Agree" were averaged with the percent of all females who answered "Agree" or "Strongly Agree" to each individual question.				

### Minnesota Trends

	School Year			
Education (PreKindergarten to 12th Grade) <sup>6</sup>	2009-10	2010-11	2011-12	2012-13
Total Enrollment	836630	837640	839426	845177
Students with Limited English Proficiency - Percent	7.6	7.7	7.7	7.8
Students Receiving Special Education - Percent	14.6	14.8	14.9	14.9
Dropout Rate per 100 7-12 graders	4.9	4.8	5.1	4.3

### Benton County Trends

	School Year			
Education (PreKindergarten to 12th Grade) <sup>6</sup>	2009-10	2010-11	2011-12	2012-13
Total Enrollment	5455	5559	5830	5756
Students with Limited English Proficiency - Percent	0.4	0.4	0.4	.05
Students Receiving Special Education - Percent	16.9	16.5	16.4	17.0
Dropout Rate per 100 7-12 graders	1.8	2.2	0.6	1.4

<http://www.health.state.mn.us/divs/chs/Trends/index.htm>

<b>Students Receiving Special Education - Percent, School Year</b>				
	2010-11	2011-12	2012-13	2013-14
<b><u>Minnesota</u></b>	14.8	14.9	14.9	14.9
<b><u>Benton</u></b>	16.5	16.4	17.0	17.3
<b><u>Stearns</u></b>	17.3	17.2	17.4	17.0

**Sources**

<sup>1</sup> US Census [www.census.gov](http://www.census.gov) Poverty estimates and median household income: [www.census.gov/hhes/www/saipe/county.html](http://www.census.gov/hhes/www/saipe/county.html)

<sup>2</sup> Minnesota State Demographer, <http://www.demography.state.mn.us/estimates.html> and US Census [www.census.gov](http://www.census.gov)

<sup>3</sup> Minnesota Department of Employment and Economic Development, <http://www.deed.state.mn.us/lmi/tools/laus.htm>

<sup>4</sup> Minnesota Department of Human Services

<sup>5</sup> US Department of Commerce, Bureau of Economic Analysis, <http://www.bea.gov/itable/>

<sup>6</sup> Minnesota Department of Education - [www.education.state.mn.us/mde/Data/index.html](http://www.education.state.mn.us/mde/Data/index.html)

<sup>7</sup> Minnesota Department of Health, Center for Health Statistics, [www.health.state.mn.us/divs/chs](http://www.health.state.mn.us/divs/chs)

<sup>8</sup> Minnesota Department of Health, Center for Health Statistics, linked birth/death cohort

For more detailed data on births and deaths in Minnesota go to the Minnesota Vital Statistics Interactive Queries Website:  
<https://pqc.health.state.mn.us/mhsq/index.jsp>

## Referrals by District for Early Childhood Special Education

Source: Benton-Stearns Education District

	2011-12	2012-13	2013-14	2014-15
	TOTAL	TOTAL	TOTAL	July- Jan
Kimball	3	7	6	2
Foley	8	17	18	17
Holdingford	8	9	5	7
ROCORI	9	23	21	14
Sartell	37	42	47	36
Sauk Rapids	61	80	95	43

Minnesota

**Table 3.**  
Number of recipients in state (by eligibility category, age, and receipt of OASDI benefits) and amount of payments, by county, December 2013

County	ANSI Code	Total	Category		Age			SSI recipients also receiving OASDI	Amount of payments (thousands of dollars) <sup>a</sup>
			Aged	Blind and disabled	Under 18	18-64	65 or older		
Total, Minnesota	27	93,748	10,414	83,334	13,917	59,840	19,991	28,115	52,385
Aitkin	27001	261	22	239	26	179	56	110	132
Anoka	27003	4,399	451	3,948	754	2,869	776	1,168	2,468
Becker	27005	718	62	656	130	461	127	271	393
Beltrami	27007	1,316	84	1,232	243	857	216	516	689
Benton	27009	662	39	623	105	461	96	254	348
Big Stone	27011	96	20	76	15	47	34	38	44
Blue Earth	27013	1,030	168	862	134	659	237	462	489
Brown	27015	267	33	234	34	180	53	112	131
Carlton	27017	591	36	555	93	416	82	205	324
Carver	27019	526	60	466	80	352	94	149	274
Cass	27021	787	61	726	92	555	140	325	387
Chippewa	27023	180	17	163	28	119	33	67	93
Chisago	27025	553	26	527	65	424	64	183	297
Clay	27027	1,063	63	1,000	171	754	138	362	578
Clearwater	27029	223	31	192	29	135	59	93	108
Cook	27031	52	(X)	(X)	(X)	36	(X)	20	26

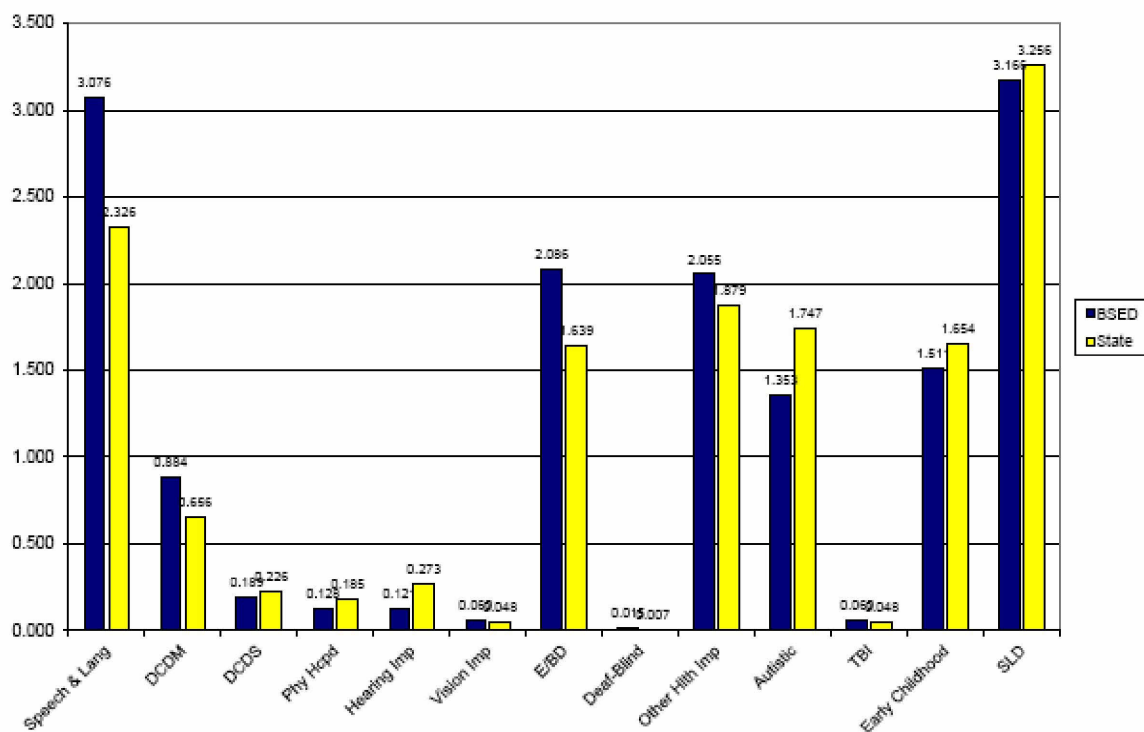
## Number of students currently being serviced by BSED: TOTAL = 88

Sauk Rapids	35		<b>Ages:</b>	
Sartell	22		0-1	11
Foley	8		1	29
ROCORI	17		2	30
Kimball	4		3	18
Holdingford	2			

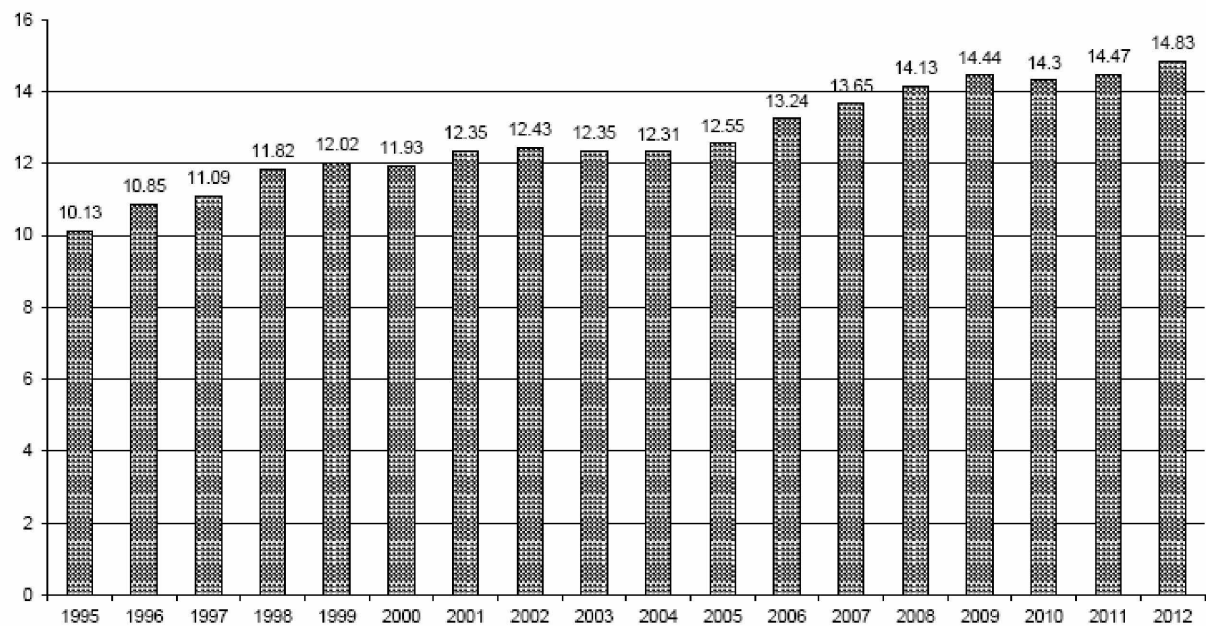
Source: Benton Stearns Education District, Early Childhood Special Education 2/2015

BENTON-STEARNs EDUCATION DISTRICT  
UNDUPLICATED CHILD COUNT - DECEMBER 1, 2012  
January 22, 2013  
2012

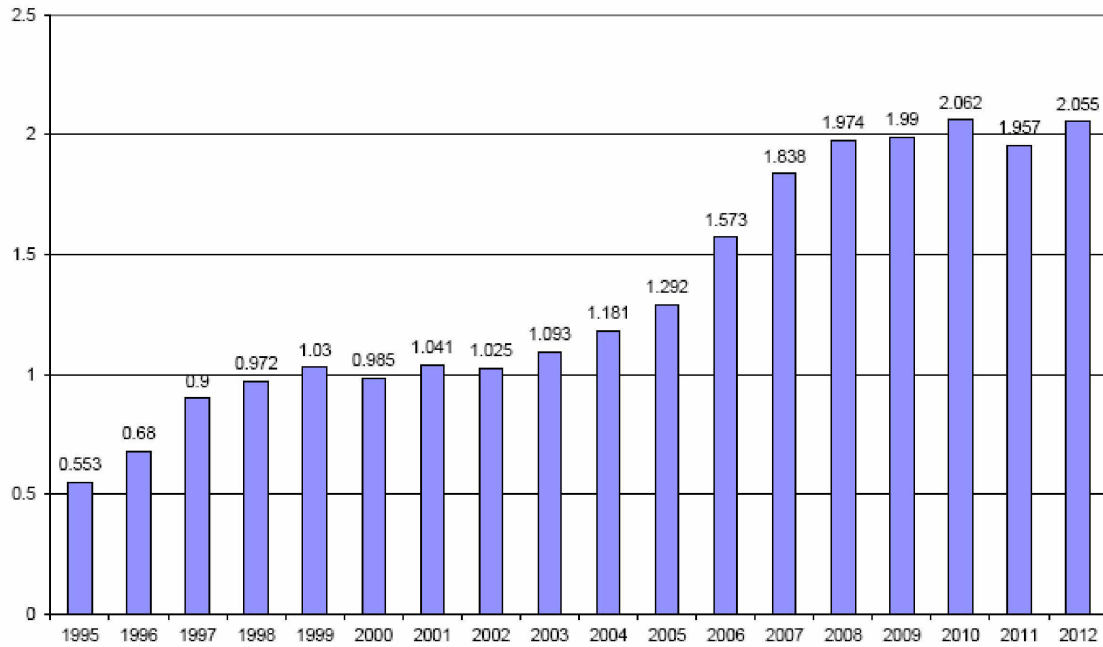
Total Enrollment	S.Rapids 3,678		Foley 1,779		H'ford 874		Kimball 720		Sartell 3,878		ROCORI 2,304		Ed Dist 13,233	
	Count	%	Count	%	Count	%	Count	%	Count	%	Count	%	Count	%
Speech & Lang	135	3.67	57	3.20	23	2.63	18	2.50	141	3.64	33	1.43	407	3.078
DCDM	55	1.50	24	1.35	4	0.46	4	0.56	17	0.44	13	0.56	117	0.884
DCDS	8	0.22	6	0.34	0	0.00	0	0.00	4	0.10	7	0.30	25	0.189
Phy Hcpd	6	0.16	0	0.00	2	0.23	2	0.28	4	0.10	3	0.13	17	0.128
Hearing Imp	8	0.22	2	0.11	0	0.00	0	0.00	5	0.13	1	0.04	16	0.121
Vision Imp	5	0.14	0	0.00	0	0.00	0	0.00	2	0.05	1	0.04	8	0.060
SLD	133	3.62	88	4.83	24	2.75	21	2.92	104	2.68	51	2.21	419	3.166
E/BD	92	2.50	38	2.14	13	1.49	12	1.67	93	2.40	28	1.22	276	2.086
Deaf-Blind	1	0.03	0	0.00	0	0.00	0	0.00	0	0.00	1	0.04	2	0.015
Other Hth Imp	105	2.85	25	1.41	15	1.72	18	2.50	75	1.93	34	1.48	272	2.055
Autistic	68	1.79	18	1.01	12	1.37	15	2.08	44	1.13	24	1.04	179	1.353
TBI	1	0.03	1	0.06	3	0.34	0	0.00	2	0.05	1	0.04	8	0.060
Early Childhood	92	2.50	22	1.24	8	0.92	9	1.25	47	1.21	22	0.95	200	1.511
SMI	2	0.05	1	0.06	1	0.11	1	0.14	7	0.18	4	0.17	16	0.121
Total	709		280		105		100		545		223		1982	
Percent of Population	19.28%		15.74%		12.01%		13.89%		14.05%		9.68%		14.83%	
Percent on 12/1/11	18.99%		14.75%		11.36%		14.36%		13.94%		9.13%		14.47%	
Change	0.29%		0.99%		0.66%		-0.47%		0.12%		0.55%		0.36%	



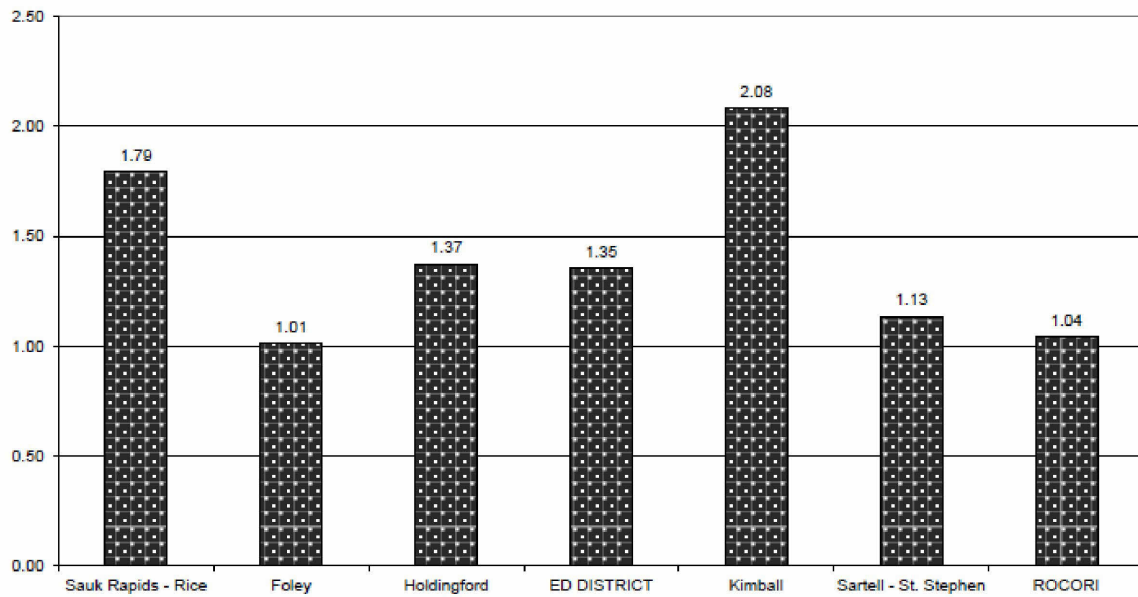
### BSED SPECIAL EDUCATION Percent of Total Student Population



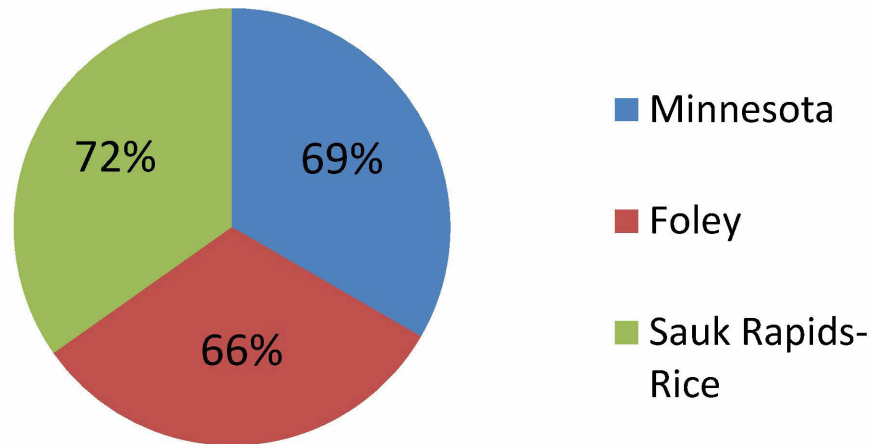
Benton-Stearns Education District  
Other Health Disabilities: History of December 1 Child Count



Autism Comparison by District  
December 1, 2012



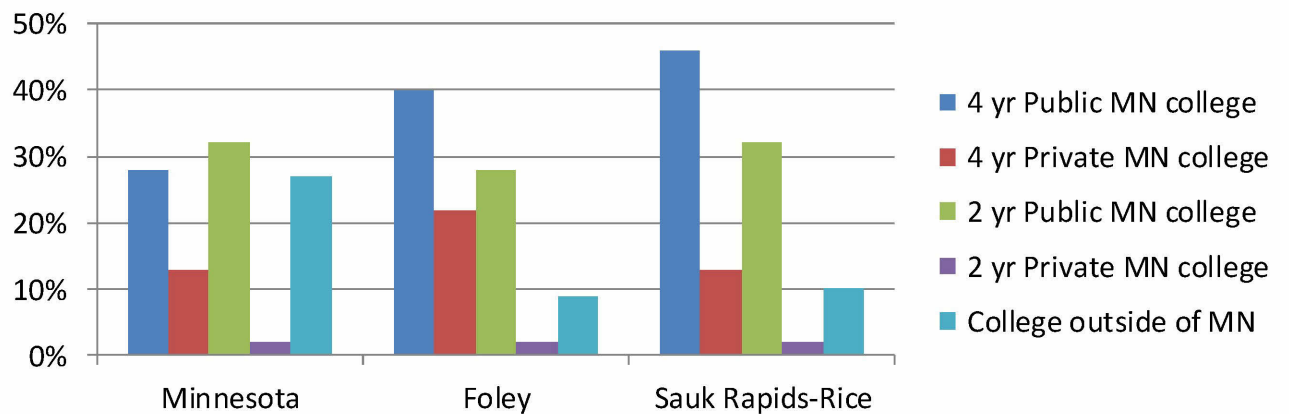
## % of Graduates Enrolling in College 2012



The Minnesota P-20 Education Partnership governs the SLEDs system. The project is managed jointly by the [Minnesota Office of Higher Education \(OHE\)](#), [Minnesota Departments of Education \(MDE\)](#), and [Employment and Economic Development \(DEED\)](#)

<http://sleds.mn.gov/#>

## 2012 College Enrollment



The Minnesota P-20 Education Partnership governs the SLEDs system. The project is managed jointly by the [Minnesota Office of Higher Education \(OHE\)](#), [Minnesota Departments of Education \(MDE\)](#), and [Employment and Economic Development \(DEED\)](#)

<http://sleds.mn.gov/#>



# Healthy Living

	Mothers receiving pre-natal care in first trimester (percent)			
	1993-1997	1998-2002	2003-2007	2008-2012
<b>MN</b>	83.5	84.8	86.2	85.3
<b>Benton</b>	86.7	90.1	90.1	88.4

**original source** Minnesota Department of Health, Center for Health Statistics, [www.health.state.mn.us/divs/chs](http://www.health.state.mn.us/divs/chs)

**local source** Minnesota Department of Health, Center for Health Statistics (*Minnesota State, County, and Community Health Board Vital Statistics Trend Report, 1991-2010, Natality Section* )

**link** <http://www.health.state.mn.us/divs/chs/trends/index.html>

	Number of infant deaths by birth year			
	1992-1996	1997-2001	2002-2006	2007-2011
<b>MN</b>	2,186	1,888	1,747	1,785
<b>Benton</b>	8	16	23	11

**original source** Minnesota Department of Health, Center for Health Statistics, [www.health.state.mn.us/divs/chs](http://www.health.state.mn.us/divs/chs)

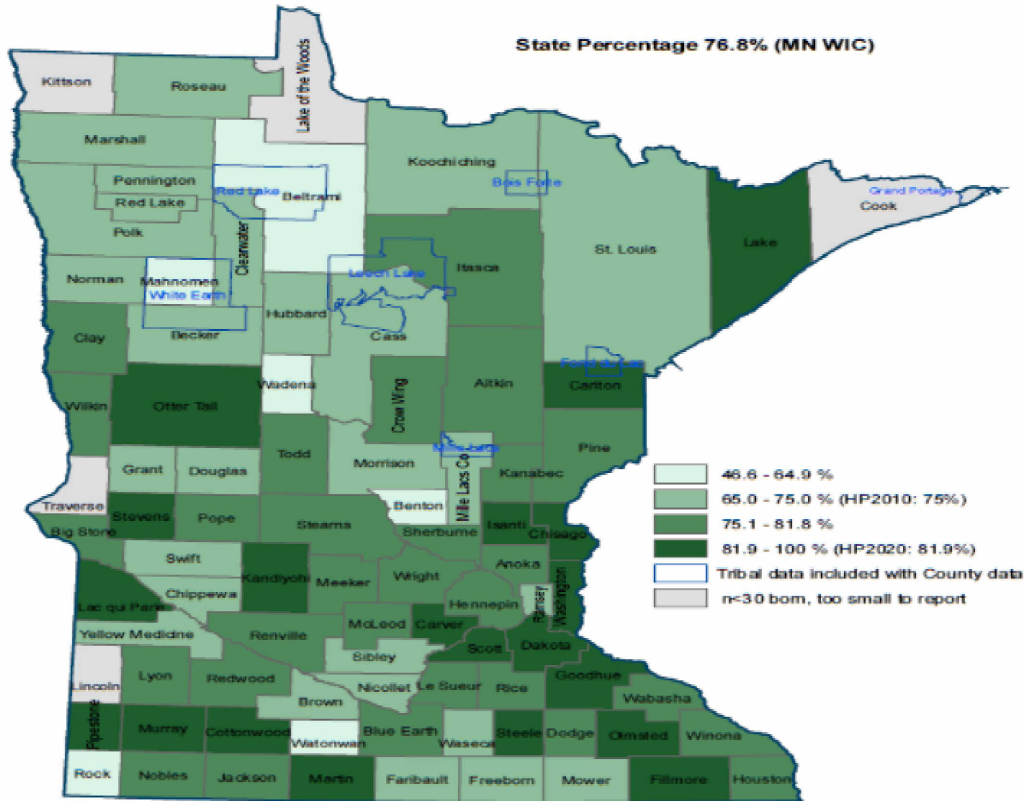
**local source** Minnesota Department of Health, Center for Health Statistics (*Minnesota State, County, and Community Health Board Vital Statistics Trend Report, 1991-2010, Natality Section* )

**link** <http://www.health.state.mn.us/divs/chs/trends/index.html>

		<b>Low-birth-weight infants (singletons) (percent); Mothers who smoked during pregnancy (percent)</b>			
		<b>1993-1997</b>	<b>1998-2002</b>	<b>2003-2007</b>	<b>2008-2012</b>
<b>MN</b>	<b>total births</b>	320,355	333,265	358,777	348,605
	<b>low birth weight</b>	<b>4.4</b>	<b>4.5</b>	<b>4.9</b>	<b>4.8</b>
	<b>smoking during pregnancy</b>	<b>13.5</b>	<b>11.4</b>	<b>9.7</b>	<b>10.6</b>
<b>Benton</b>	<b>total births</b>	2,412	2,695	2,990	2,907
	<b>low birth weight</b>	<b>4.3</b>	<b>4.9</b>	<b>5.5</b>	<b>4.8</b>
	<b>smoking during pregnancy</b>	<b>19.4</b>	<b>16.8</b>	<b>17.2</b>	<b>17.7</b>
<b>original source</b>	Minnesota Department of Health, Center for Health Statistics				
<b>local source</b>	MN Center for Health Statistics ( <i>Minnesota State, County, and Community Health Board Vital Statistics Trend Report, 1991-2010</i> , Natality Section)				
<b>link</b>	<a href="http://www.health.state.mn.us/divs/chs/trends/index.html">http://www.health.state.mn.us/divs/chs/trends/index.html</a>				
<b>notes</b>	LBW: Live births who are less than 2500 grams at birth				
	* For indicator <i>LBW</i> : "percentages based on numerators less than or equal to 20 may be unstable and should be interpreted with caution" - MCHS				

<b>Children &lt; 5 years ever breastfed, WIC participants (percent)</b>										
	<b>2006</b>		<b>2007</b>		<b>2008</b>		<b>2009</b>		<b>2010</b>	
	<b>total</b>	<b>% breastfed</b>	<b>total</b>	<b>% breastfed</b>	<b>total</b>	<b>% breastfed</b>	<b>total</b>	<b>% breastfed</b>	<b>total</b>	<b>% breastfed</b>
<b>MN</b>	129,890	<b>71.0</b>	138,671	<b>71.2</b>	146,896	<b>72.9</b>	146,749	<b>73.6</b>	140,847	<b>74.4</b>
<b>Benton</b>	258	<b>54.7</b>	283	<b>63.3</b>	268	<b>59.7</b>	227	<b>60.8</b>	248	<b>58.9</b>
<b>original source</b>	Centers for Disease Control and Prevention, 2010 Pediatric and Pregnancy Nutrition Surveillance System (PedNSS)									
<b>local source</b>	MN Department of Health, WIC Program									
<b>link</b>	<a href="http://www.health.state.mn.us/divs/fh/wic/localagency/infosystem/pednss/2010table19.pdf">http://www.health.state.mn.us/divs/fh/wic/localagency/infosystem/pednss/2010table19.pdf</a>									
<b>notes</b>	"Reporting period is January 1 through December 31"									
	Analyses based on one record per child									
	Excludes records with unknown data or errors									
	Infants born during the reporting period included in the <i>Ever Breastfed</i> analysis. Infants who turned 6 months of age during the reporting period by/on their date of visit included in the <i>Breastfed At Least 6 Months</i> analysis. Children who turned 12 months of age during the reporting period by/on their date of visit included in the <i>Breastfed At Least 12 Months</i> analysis									
	Healthy People 2010 goal (breastfeeding in early post-partum): 75%									
	*Percentages are not calculated if < 100 records are available for analysis after exclusions." - CDC Pediatric Nutrition Surveillance Report <a href="http://www.health.state.mn.us/divs/fh/wic/localagency/infosystem/pednss/2010table19.pdf">http://www.health.state.mn.us/divs/fh/wic/localagency/infosystem/pednss/2010table19.pdf</a> (accessed 3.26.13)									

## Breastfeeding Initiation in Minnesota WIC by County of Residence, 2013



Source: MN-WIC Information System, Births in Calendar Year 2013

Healthy People 2020 objective is 81.9% for Initiation

### 2014 Totals

Preliminary Breastfeeding Initiation for Infants Participating in Minnesota WIC who were Born During the First Half of Calendar Year 2014 by County of Residence, Mid-Year Rates as of June 30, 2014  
Minnesota WIC Information System

County of Residence of Participant <sup>1</sup>	Total with BF Information <sup>2</sup>	Initiated Breastfeeding <sup>3</sup>
<b>MINNESOTA</b>	<b>10,165</b>	<b>7,851 (77.2)</b>
AITKIN	22	*20 (****)
ANOKA	494	384 (77.7)
BECKER	81	60 (74.1)
BELTRAMI	187	100 (53.5)
BENTON	76	36 (47.4)
BIG STONE	7	*6 (****)
BLUE EARTH	105	81 (77.1)

# East Central TZD Region Crash Data, 2009 to 2013\*: Benton County

Source: Department of Public Safety, MN Department of Health, MN Department of Transportation

\*2013 data are preliminary

Type of Crash	Killed	Accident with Injury
Injuries	28	78
Distracted	6	20
Alcohol	5	18
Speed	3	14
Unbelted	8	18
Lane Departure	14	34
Intersection	14	34
Motorcyclist	4	12
Pedestrian	3	6
Bicyclist	0	1

**Injury Table 11: Seatbelt Use by Vehicle Occupant Killed or Injured in Minnesota  
By State and County, 2012**

	Seatbelt Use						Total Killed or Injured
	Used		Not Used		Unknown		
	Number	Percent	Number	Percent	Number	Percent	
State of Minnesota	21,476	82.5	1,881	7.2	2,668	10.3	26,025
Aitkin	71	84.5	11	13.1	2	2.4	84
Anoka	1,156	84.4	79	5.8	135	9.9	1,370
Becker	119	75.8	20	12.7	18	11.5	157
Beltrami	137	73.7	27	14.5	22	11.8	186
Benton	162	87.1	13	7.0	11	5.9	186
Big Stone	16	55.2	8	27.6	5	17.2	29
Blue Earth	306	84.1	19	5.2	39	10.7	364
Brown	82	83.7	11	11.2	5	5.1	98
Carlton	104	72.7	15	10.5	24	16.8	143
Carver	278	89.1	11	3.5	23	7.4	312
Cass	98	62.4	29	18.5	30	19.1	157

	Unbelted motor vehicle occupant deaths*					
	2005-06		2007-08		2009	
	deaths	% unbelted occupant deaths	deaths	% unbelted occupant deaths	deaths	% unbelted occupant deaths
<b>MN</b>	781	<b>51.0%</b>	692	<b>45.0%</b>	288	<b>41.0%</b>
<b>Benton</b>	9	<b>44%</b>	6	<b>17.0%</b>	4	<b>50.0%</b>

original source MN Department of Traffic Safety; Toward Zero Deaths Program: Holly Kostrzewski (218-725-2828)

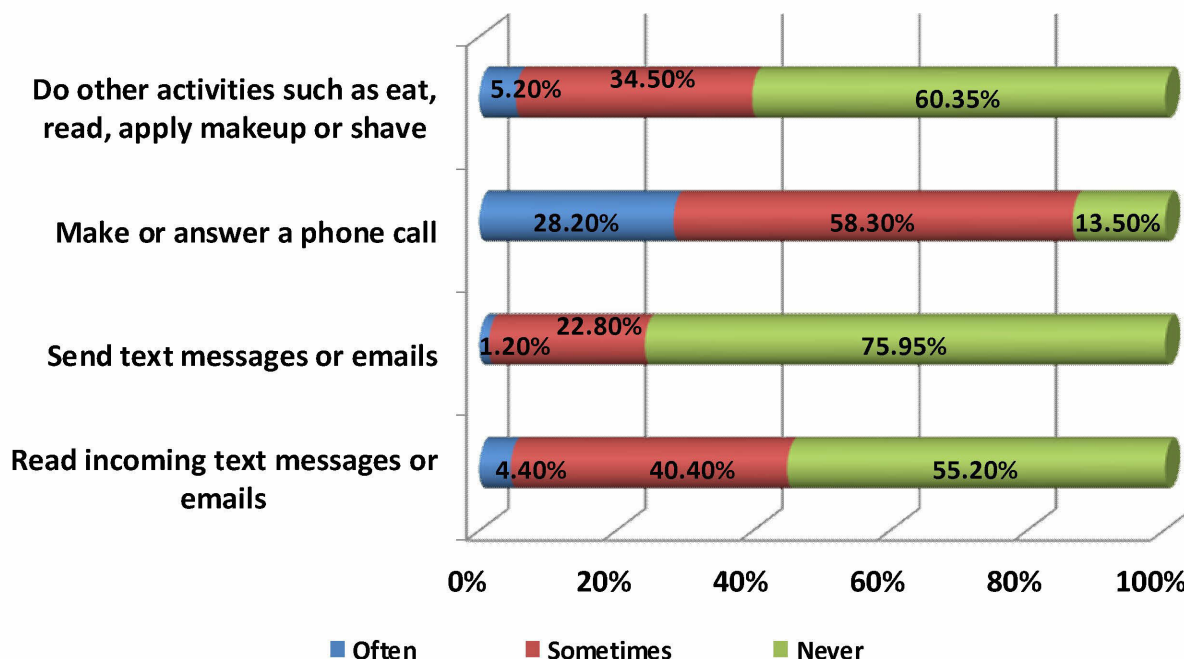
Link to <http://www.minnesotatzd.org/>

program

notes \* 2000, 2003, 2011 data not available for unbelted seatbelt deaths

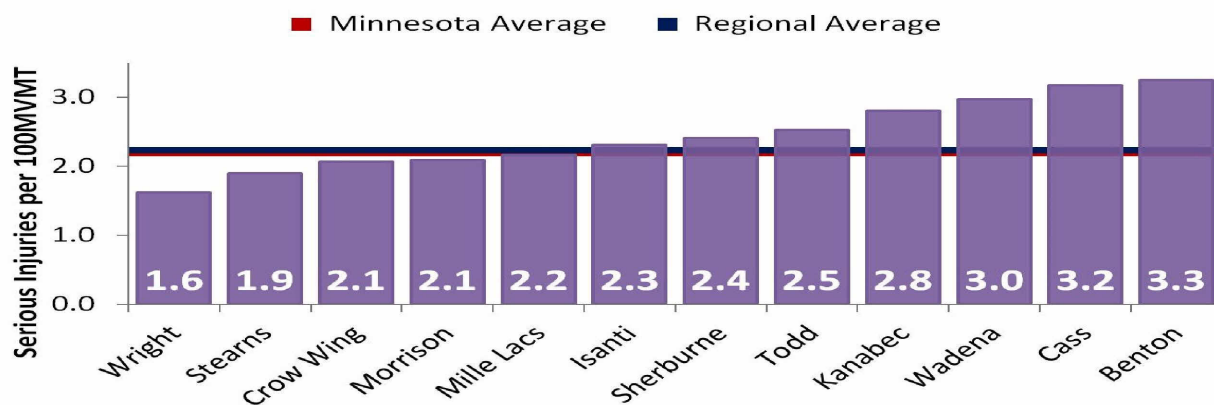
**When driving a car or other vehicle, how often do you.....various activities.**

**Source: Central MN Community Health Survey-February 2013**



## Serious Injury Rates by County

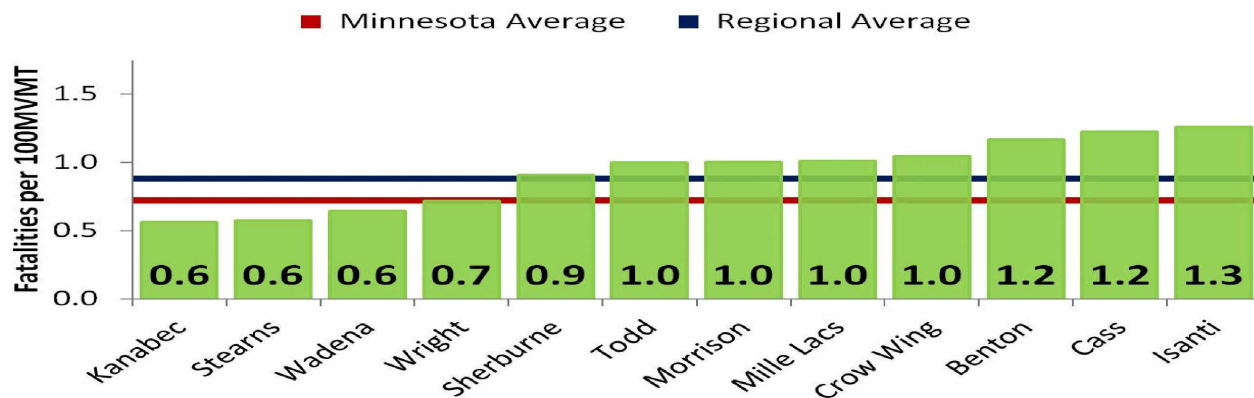
2009-2013\*\*\*



\*\*\*2013 data are preliminary

## Fatality Rates by County

2009-2013\*\*\*

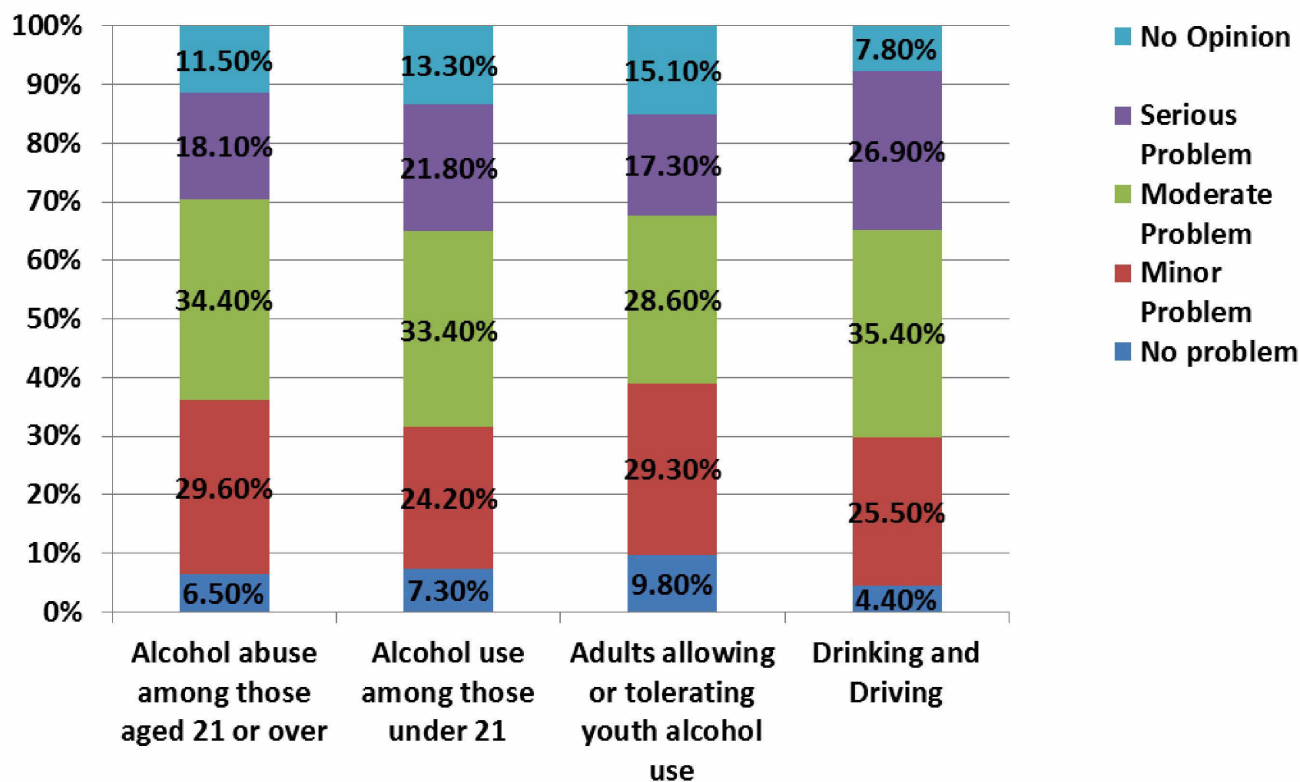


\*\*\*2013 data are preliminary



**In your opinion, how much of a problem is each of these issues in your county?**

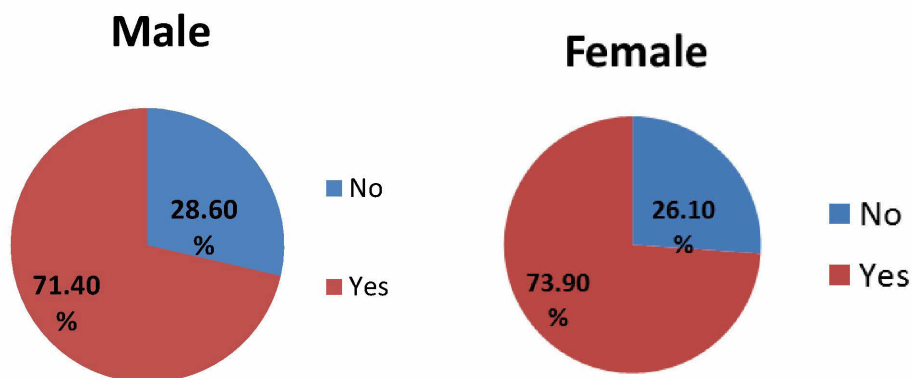
Source: Central MN Community Health Survey-February 2013



It is significant to note that all of these questions have between 75%-87% response that these issues are a problem.

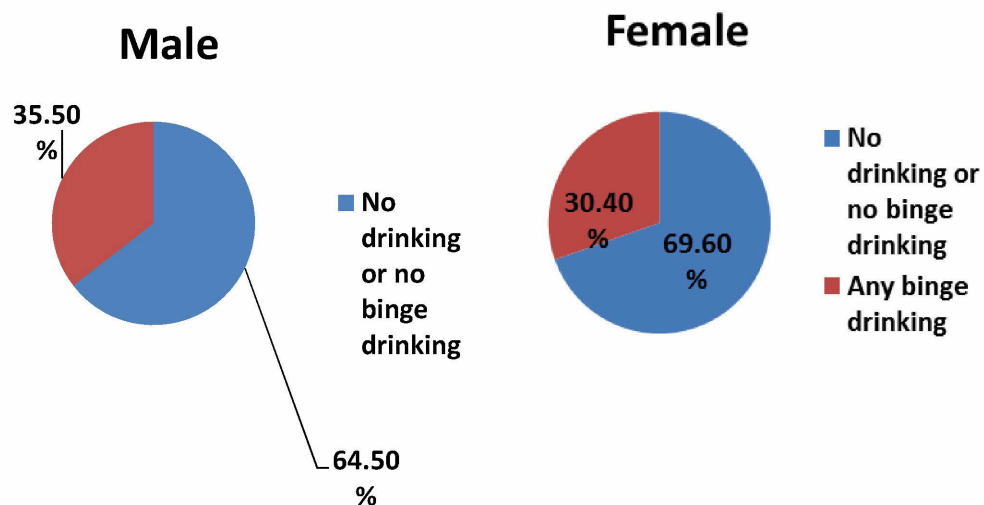
**During the past 30 days, have you had at least one drink of any alcoholic beverage such as beer, wine, a malt beverage, or liquor?**

Source: Central MN Community Health Survey-February 2013



## Binge drinking (gender specific)

Source: Central MN Community Health Survey-February 2013



	Alcohol-related motor vehicle fatalities							
	2007		2008		2009		2010	
	alcohol-related	percent of total fatalities	alcohol-related	percent of total fatalities	alcohol-related	percent of total fatalities	alcohol-related	percent of total fatalities
<b>Minnesota</b>	190	37.3	163	35.8	141	33.5	131	31.9
<b>Benton</b>	0	0	1	33	1	20	0	0

**Original source** MN Department of Public Safety

**local source** MN Department of Health, Center for Health Statistics, County Health Tables (Chemical Section)

**link** <http://www.health.state.mn.us/divs/chs/countytables/index.htm>

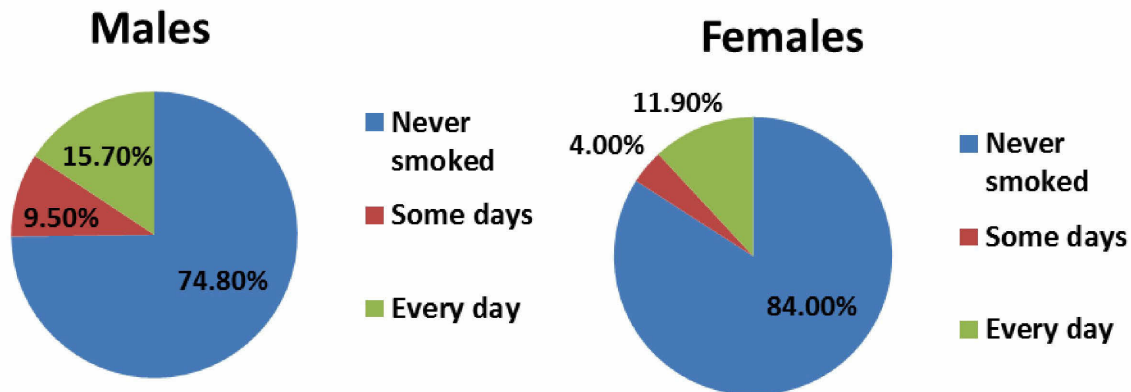
# Alcohol Use Frequency and Quantity\* Benton County, Source: Minnesota Student Survey 2013

\*5<sup>th</sup> grade survey did not ask these questions. ^New question in 2013

		Grade					
		8th		9th		10 <sup>th</sup>	
		Male	Female	Male	Female	Male	Female
		%	%	%	%	%	%
During the last 30 days, on how many days did you drink one or more drinks	0 days	90%	93%	84%	88%	65%	75%
	1 or 2 days	10%	5%	11%	10%	19%	19%
	3 to 5 days	0%	0%	3%	1%	14%	4%
	6 to 9 days	0%	2%	1%	0%	1%	2%
	10-19 days	0%	0%	1%	1%	1%	0%
	20-29 days	0%	0%	0%	0%	0%	0%
	All 30 days	0%	1%	1%	0%	0%	0%
During the last 12 month, on how many occasions (if any) have you had alcoholic beverage to drink?	0	86%	89%	72%	77%	44%	57%
	1-2	9%	7%	17%	10%	21%	18%
	3-5	4%	2%	4%	6%	14%	9%
	6-9	1%	2%	3%	4%	7%	8%
	10-19	0%	1%	2%	1%	11%	7%
	20-39	0%	0%	1%	1%	2%	2%
	40+	0%	0%	1%	0%	0%	0%
If you drink beer/wine/wine coolers/liquor, generally, how much (if any) do you drink at one time?	I don't drink beer/wine/wine coolers/liquor.	92%	92%	81%	82%	49%	64%
	1 glass/can/ drink	3%	5%	9%	10%	11%	8%
	2 glasses/cans/drinks	4%	2%	2%	3%	5%	13%
	3 glasses/cans/ drinks	1%	2%	2%	1%	7%	7%
	4 glasses/cans/drinks	0%	0%	1%	2%	4%	5%
	5 or more glasses/cans/drinks	0%	0%	5%	1%	23%	2%
During the past 30 days, on how many days did you have 5 or more drinks in a row, that is, within a couple of hours?^	0 days	98%	99%	95%	96%	81%	97%
	1 day	1%	0%	1%	2%	4%	2%
	2 days	1%	1%	2%	1%	9%	0%
	3 to 5 days	1%	1%	0%	0%	4%	1%
	6 to 9 days	0%	0%	1%	0%	2%	0%
	10-19 days	0%	0%	0%	0%	0%	0%
	20 or more days	0%	0%	1%	0%	0%	0%

## How often do you smoke cigarettes?

Source: Central MN Community Health Survey-February 2013



In 2013, one-fifth of adults who lived in Benton County (21%) were current smokers. Among students, nearly one in five 11<sup>th</sup> graders (18%) reported using tobacco. Not surprisingly, the rate of tobacco use among students in Benton County increases with their age. Benton County has similar incidence of student tobacco use when compared to the overall Minnesota student population.

## Exposure to secondhand tobacco smoke

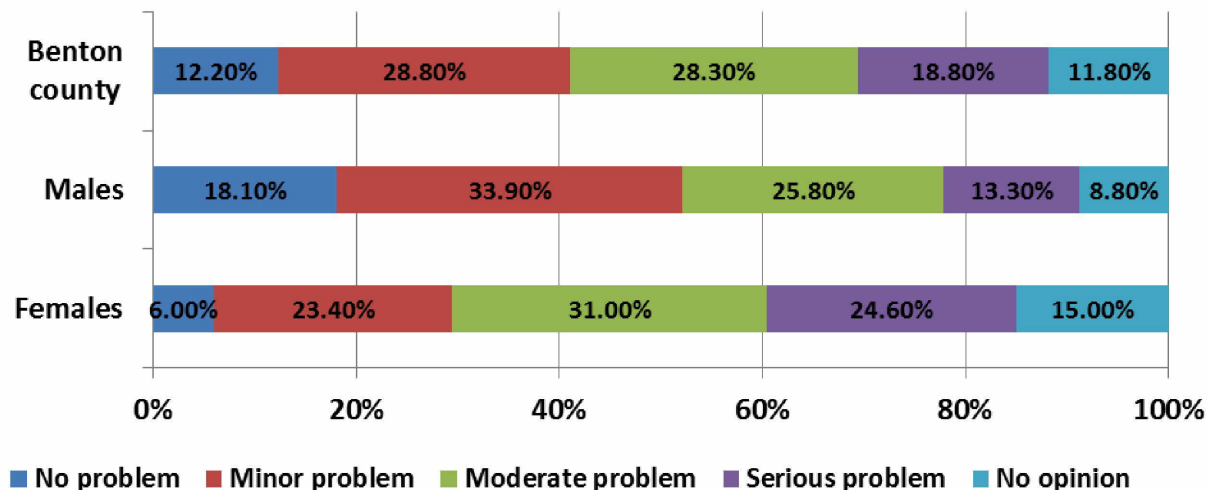
	<u>Adults</u>	<u>Students</u>
<b>Live with someone who smokes</b>	14%	N/A
<b>Been in the same room as someone who was smoking in the past seven days</b>	N/A	<b>36%</b>
<b>Been in a car with someone who was smoking in the past 7 days</b>	N/A	<b>27%</b>

**Sources:** 2013 Central Minnesota Community Health Survey, 2013 MN Student Survey.

**Note:** Table includes aggregate data for 8<sup>th</sup>, 9<sup>th</sup>, and 11<sup>th</sup> grade students in Benton County. Students in 5<sup>th</sup> grade were not asked these questions.

**In your opinion, how much of a problem is each of these issues in your county? Smoking or other tobacco use.**

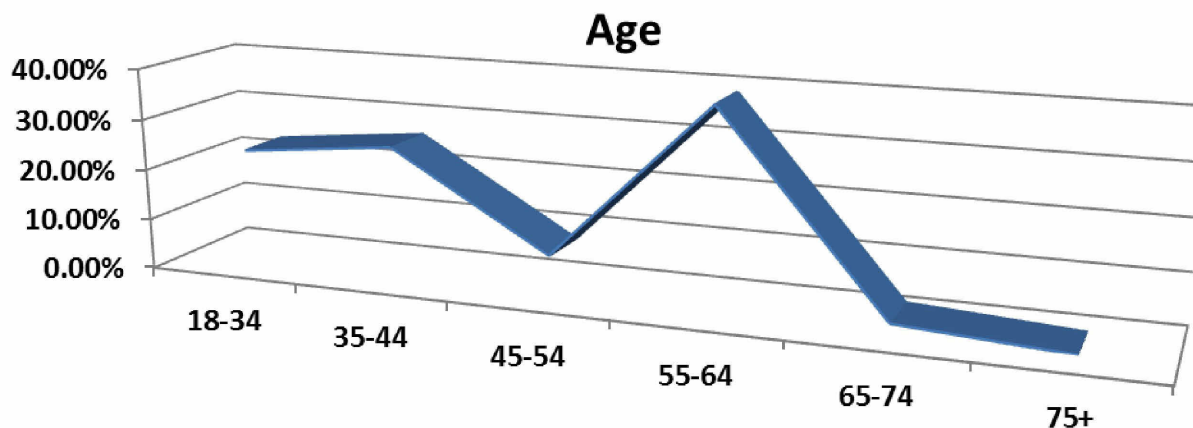
**Source: Central MN Community Health Survey-February 2013**



Three-quarters of adults in Benton County (76%) believe smoking and other tobacco use is a problem in their community (Central Minnesota Community Health Survey, 2013). A significant proportion of adults and youth in Benton County are exposed to secondhand smoke. See the table above.

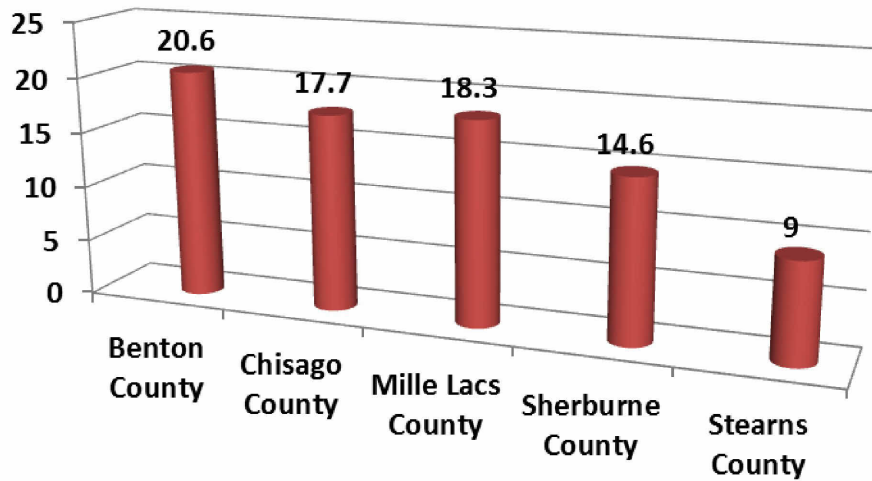
**In general, how often do you ....Smoking status? Current smoker broken down by age.**

**Source: Central MN Community Health Survey-February 2013**



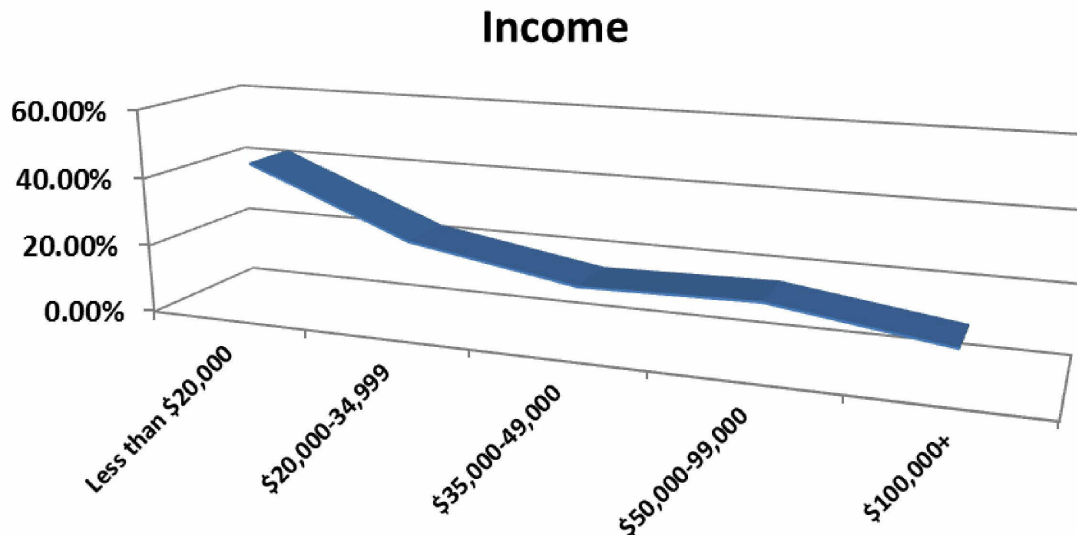
Interesting to note that our largest population of current smokers are those between the ages of 55-64 years with a small peak in the 35-44 years.

In general, how often do you ...Smoking status? Current smoker broken down by counties within the study.



Benton County has the largest portion of current smokers in relation to some of the surrounding counties.

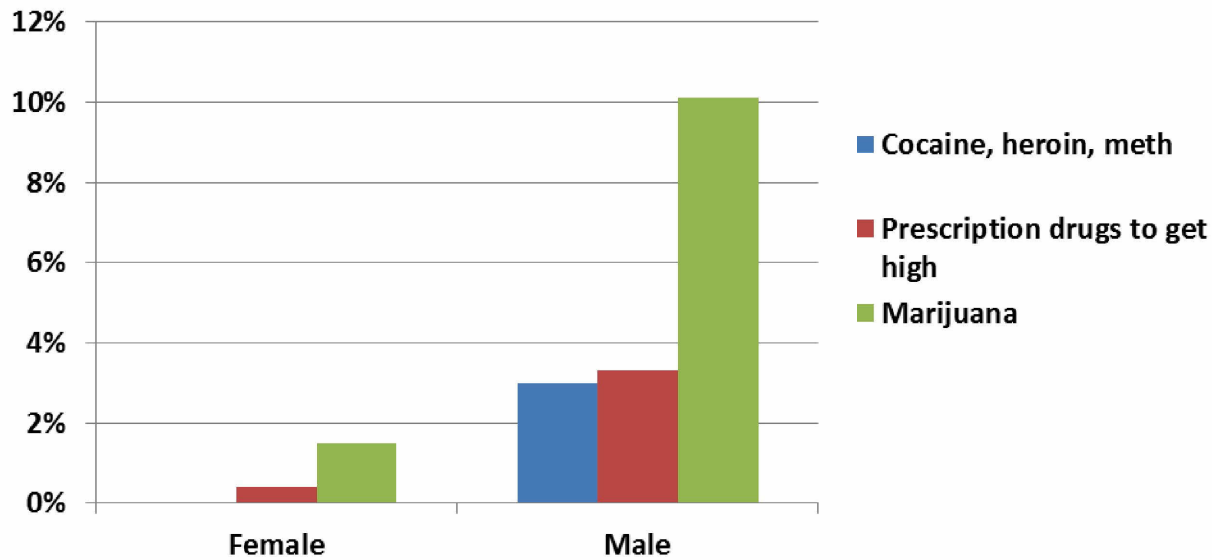
In general, how often do you ...Smoking status? Current smoker broken down by income.  
Source: Central MN Community Health Survey-February 2013





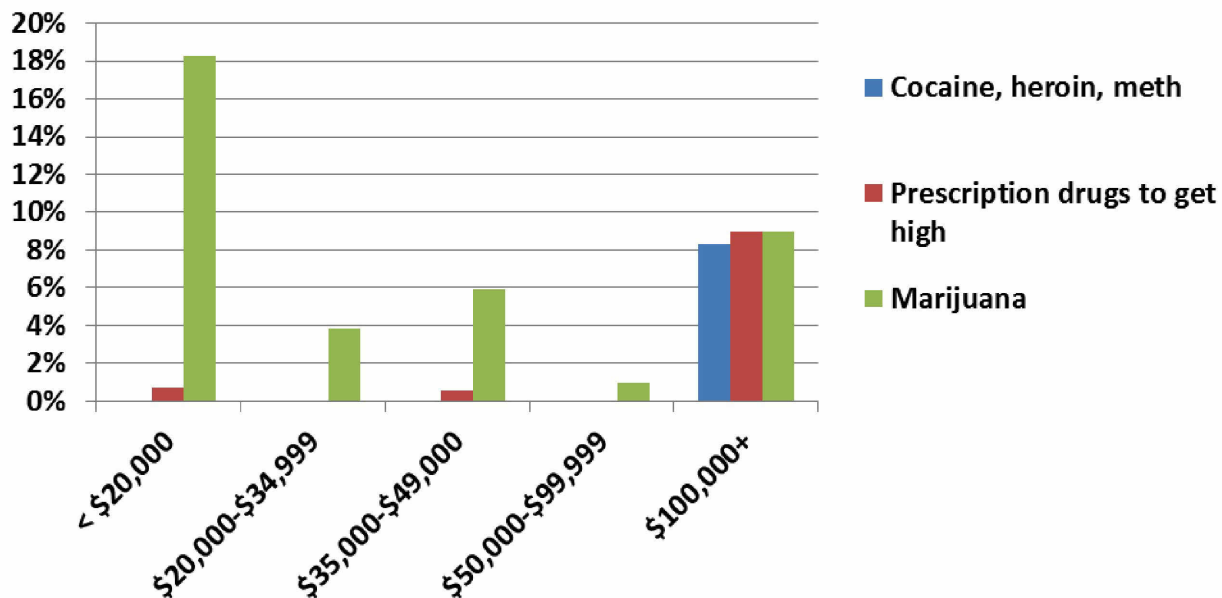
**Various drugs, user status, by gender.**

Source: Central MN Community Health Survey-February 2013



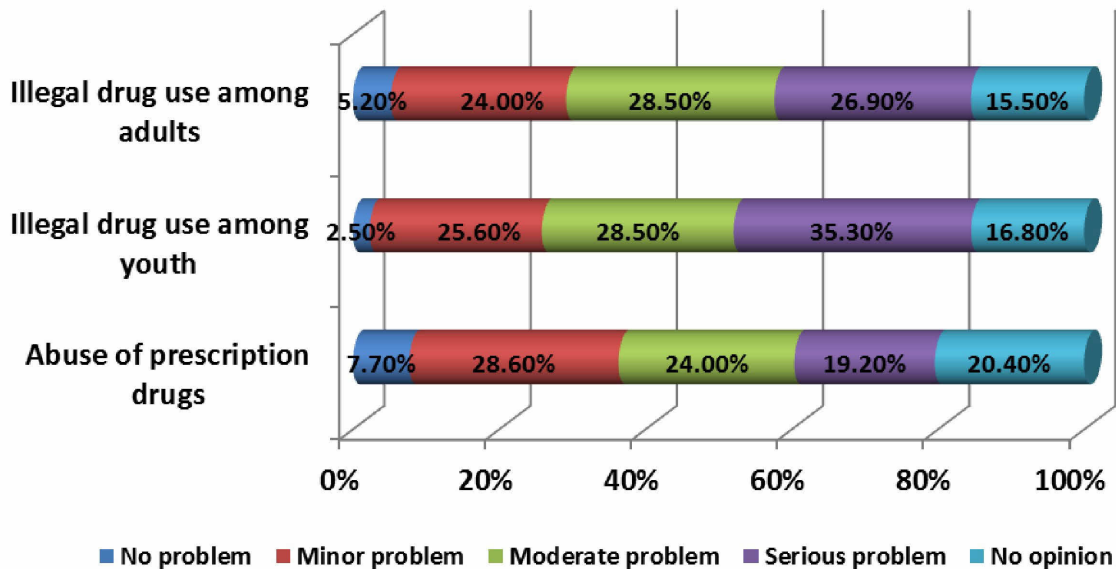
**Various drugs, user status, by household income (2012).**

Source: Central MN Community Health Survey-February 2013



In your opinion, how much of a problem is each of these issues in your county?

Source: Central MN Community Health Survey-February 2013



ALCOHOL, TOBACCO & OTHER DRUGS		ATOD use (9th graders) (percent)				
		2001	2004	2007	2010	2013
<b>MN</b>	cigarette use last 30 days	19	15	11	9	7
	smokeless tobacco use in last 30 days	*		5	5	4
	alcohol use within last 30 days	30	28	24	19	14
	binge drinking in the last 2 weeks/ 30 days *(2013)	16	15	13	10	6*
	marijuana use once or more in the last 30 days	14	12	10	10	9
	pain pill/prescription drug use once or more in the last year	7	8	4	4	7
<b>Benton</b>	cigarette use last 30 days	20	17	13	9	13
	smokeless tobacco use in last 30 days	*		6	7	11
	alcohol use within last 30 days	37	30	29	21	29
	binge drinking in the last 2 weeks/ 30 days *(2013)	20	15	17	10	8*
	marijuana use once or more in the last 30 days	14	8	7	6	10
	pain pill/prescription drug use once or more in the last year	8	8	3	4	9
<b>source</b>	MN Center for Health Statistics (MN Student Survey, Section 6: Alcohol, Tobacco, and Other Drugs)					
<b>link</b>	<a href="http://www.health.state.mn.us/divs/chs/mss/singleyr/index.html">http://www.health.state.mn.us/divs/chs/mss/singleyr/index.html</a>					
<b>notes</b>	"pain pill/prescription drug use once or more in the last year" combines two questions on the survey: 1.Percent who used any prescription drugs to get high one or more times in the last 12 months ('98-'04) 2.Percent who used prescription pain relievers to get high one or more times in the last 12 months ('07-'10)					

Summary of Substance Use		Grade					
		8 <sup>th</sup>		9 <sup>th</sup>		10 <sup>th</sup>	
		Male	Female	Male	Female	Male	Female
		%	%	%	%	%	%
Use of any tobacco products during the past 30 days	No	93%	95%	88%	93%	72%	93%
	Yes	7%	5%	12%	7%	28%	7%
Frequent (20+ days) use of any tobacco products in the past 30 days	No	100%	98%	96%	100%	91%	100%
	Yes	0%	2%	4%	0%	9%	0%
Frequent binge drinking in the past year (typically drank 5 or more drinks at a time and drank 10 or more occasions during the past year)	No	100%	100%	97%	100%	89%	100%
	Yes	0%	0%	3%	0%	11%	0%
Any alcohol, marijuana and/or other drug use during the past year (excluding tobacco)	No alcohol or marijuana or other drug use in the past year	80%	83%	69%	72%	39%	50%
	Used only alcohol in the past year	10%	9%	20%	18%	33%	31%
	Used alcohol and marijuana in the past year, but not other drugs	2%	1%	5%	2%	16%	13%
	Used marijuana or other drugs in the past year, but not alcohol	3%	4%	0%	4%	4%	5%
	Used alcohol and marijuana or other drugs in the past year.	4%	3%	5%	4%	7%	1%
MN Center for Health Statistics (MN Student Survey, Section 6: Alcohol, Tobacco, and Other Drugs)							
<a href="http://www.health.state.mn.us/divs/chs/mss/singleyr/index.html">http://www.health.state.mn.us/divs/chs/mss/singleyr/index.html</a>							

	Sexual behavior (sexually active once or more) (9th graders) (percent)				
	2001	2004	2007	2010	2013
<b>MN</b>	19	19	19	20	15
<b>Benton</b>	18	13	16	19	22

**source** MN Center for Health Statistics, Student Survey (section 9 - Sexual Health and Protective Factors)

**link** <http://www.health.state.mn.us/divs/chs/mss/singleyr/index.html>

		Sexually transmitted infections - chlamydia and gonorrhea (rates per 100,000 persons)							
		2010		2011		2012		2013	
		case	rate	case	rate	case	rate	case	rate
<b>MN</b>	<b>chlamydia</b>	15,294	<b>288.4</b>	16,898	<b>318.6</b>	18,048	<b>340.3</b>	18,724	<b>353.0</b>
	<b>gonorrhea</b>	2,119	<b>40.0</b>	2,283	<b>43.0</b>	3,082	<b>58.1</b>	3,872	<b>73.0</b>
<b>Benton</b>	<b>chlamydia</b>	42	<b>123.0</b>	62	<b>161.0</b>	98	<b>255.0</b>	101	<b>263.0</b>
	<b>gonorrhea</b>	6	<b>18.0</b>	4	<b>0.0</b>	10	<b>26.0</b>	21	<b>55.0</b>

**source** Minnesota Department of Health, Infectious Disease Epidemiology, Prevention and Control Division

**link** <http://www.health.state.mn.us/divs/idepc/dtopics/stds/stdstatistics.html>

**note** reporting is per county of residents

\*incidence rate not calculated for cells <5

incidence rate for 2007-2009 calculated using Census 2000 population figures; incidence rates for 2010-2011 calculated using population figures

	Feel that other adults in the community care about them (quite a bit, or very much) (9th graders) (percent)				
	2001	2004	2007	2010	2013
<b>MN</b>	34	36	41	45	36
<b>Benton</b>	31	33	38	47	71

**source** MN Center for Health Statistics, Student Survey (Section - Family and Relationships)

<http://www.health.state.mn.us/divs/chs/mss/singleyr/index.html>

# Disease & Injury

		Leading causes of death					
		1998-2002		2003-2007		2008-2012	
		number	age-adjusted death rate	number	age-adjusted death rate	number	age-adjusted death rate
MN	heart disease	45,015	179.4	39,037	140.1	36,531	120.7
	cancer	44,974	187.1	45,329	172.9	47,515	164.6
	stroke	14,016	55.1	11,757	42.1	10,161	33.6
	unintentional injury	8,855	35.2	9,648	35.4	10,785	37.5
Benton	heart disease	455	264.5	404	222.7	333	157.3
	cancer	303	196.4	357	214.1	307	158.1
	stroke	149	83.3	128	68.1	87	40.6
	unintentional injury	78	43.5	63	32.9	69	34.3

**source** Minnesota Department of Health, Center for Health Statistics, *Minnesota State, County, and Community Health Board Vital Statistics Trend Report 1991-2010* (Mortality Section)

**link** <http://www.health.state.mn.us/divs/chs/countytables/profiles2010/index.html>

**notes** fatal unintentional injury ICD-10 Codes: V01-X59, Y85-Y86 (i.e. motor vehicle accidents and falls)

**Benton County**

**Mortality Table 4: Minnesota's 15 Leading Causes of Death by Age Group  
2012**

Cause	All Ages		Age Groups							
	Rank	Number	0-4	5-14	15-24	25-44	45-54	55-64	65-74	75+
Alzheimer's disease	3	20	0	0	0	0	0	0	0	20
Cancer	1	69	0	0	0	2	4	11	12	40
Cirrhosis	11	4	0	0	0	1	1	0	1	1
Chronic lower respiratory dis.	5	14	0	0	0	0	1	1	4	8
Diabetes	6	10	0	0	0	1	1	1	2	5
Heart disease	2	65	0	0	0	0	3	4	5	53
Hypertension	10	5	0	0	0	0	0	1	1	3
Nephritis	13	3	0	0	0	0	0	0	1	2
Parkinson's	7	9	0	0	0	0	0	0	1	8
Pneumonia and influenza	7	9	0	0	0	0	1	0	2	6
Pneumonitis due to solids/liquids	14	1	0	0	0	0	0	0	0	1
Septicemia	14	1	0	0	0	0	0	0	0	1
Stroke	4	19	0	0	0	0	1	3	1	14
Suicide	11	4	0	0	1	2	0	0	1	0
Unintentional injury	9	7	0	0	1	2	1	1	0	2

Source: Minnesota Department of Health,  
Center for Health Statistics

For more data on deaths in Minnesota go the Minnesota Vital Statistics Interactive Queries Website:

<https://pgc.health.state.mn.us/mhsq/index.jsp>

These are the 15 leading causes of death for Minnesota in 2012, the causes may change from year to year and are not necessarily the 15 leading causes of death for each county or CHB.

**Have you ever been told by a doctor or other health care professional that you have diabetes?**

**Source: Central MN Community Health Survey-February 2013**

	Yes	No	Total
55-64 age group	11.8%	88.2%	3,522
65-74 age group	31.5%	68.5%	1,473
75+ age group	18.6%	81.4%	1,428
Benton County	9.1%	90.9%	24,738

***Out of the 6423 adults asked in Benton County, approximately 79% replied NO to being told that they have Diabetes. The largest single age grouping replying YES to being told that they have Diabetes was the 65-74 age group and the lowest responses of NO.***

**Have you ever been told by a doctor or other health care professional that you have high blood pressure?**

**Source: Central MN Community Health Survey-February 2013**

	Yes	No	Total
55-64 age group	32.2%	67.8%	3,602
65-74 age group	65.6%	34.4%	1,878
75+ age group	60.8%	39.2%	1,649
Benton County	25.6%	74.4%	26,016

***Out of the 7129 adults asked in Benton County, approximately 47% replied NO to being told that they have High Blood Pressure. The largest single age grouping replying YES to being told that they have High Blood Pressure was the 65-74 age group and the lowest responses of NO.***



**Have you ever been told by a doctor or health care professional that you have high blood cholesterol?**  
**Source: Central MN Community Health Survey-February 2013**

	Yes	No	Total
55-64 age group	40.5%	59.5%	3,633
65-74 age group	61.7%	38.3%	1,650
75+ age group	64.9%	35.1%	1,569
Benton County	29.1%	70.9%	26,248

***Out of the 6852 adults asked in Benton County, approximately 44% replied NO to being told that they have High Blood Cholesterol. The largest single age grouping replying YES to being told that they have High Blood Cholesterol was the 75+ age group and the lowest responses of NO.***

**Stroke, Age Adjusted Death Rate**

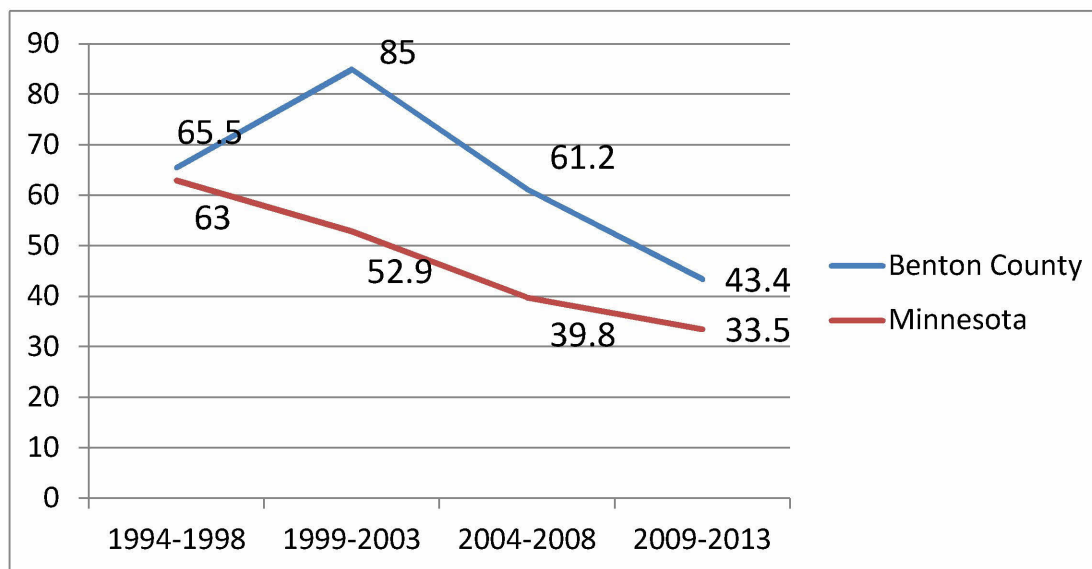
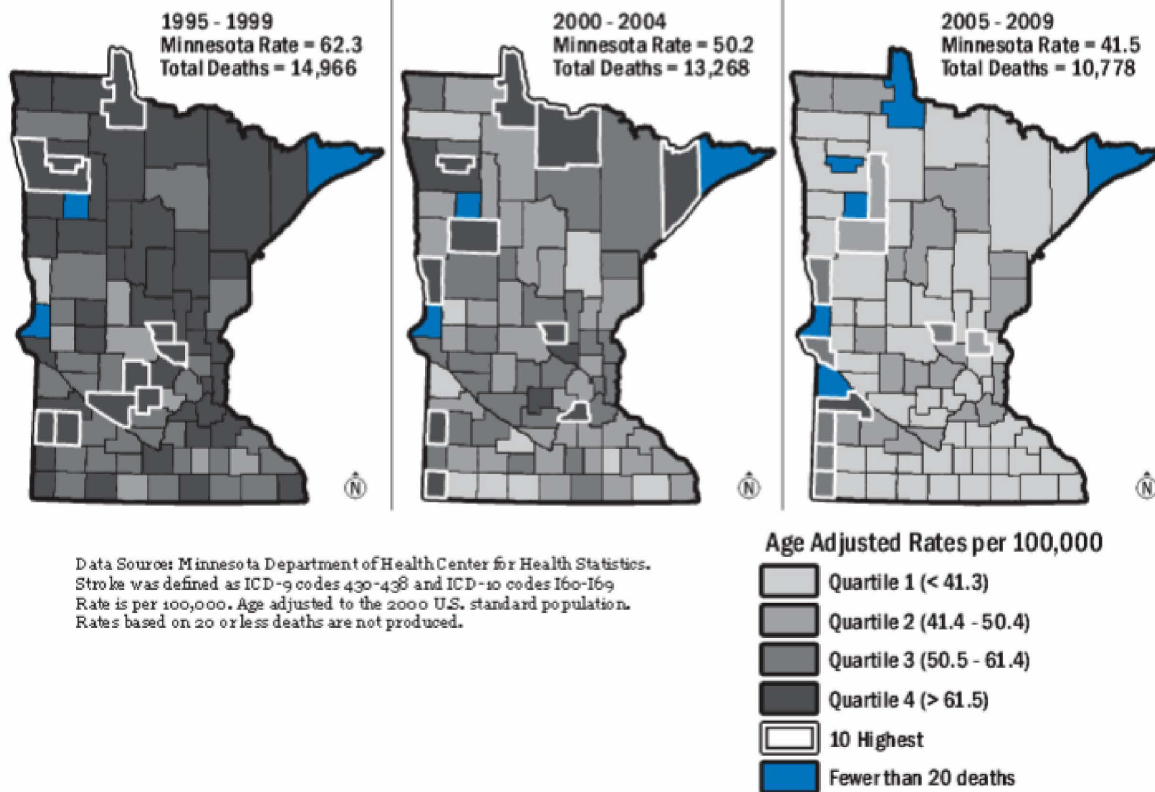


Figure 5.8. Stroke Mortality, Age Adjusted by County, 1995 through 2009



### Heart Disease, Age Adjusted Death Rate

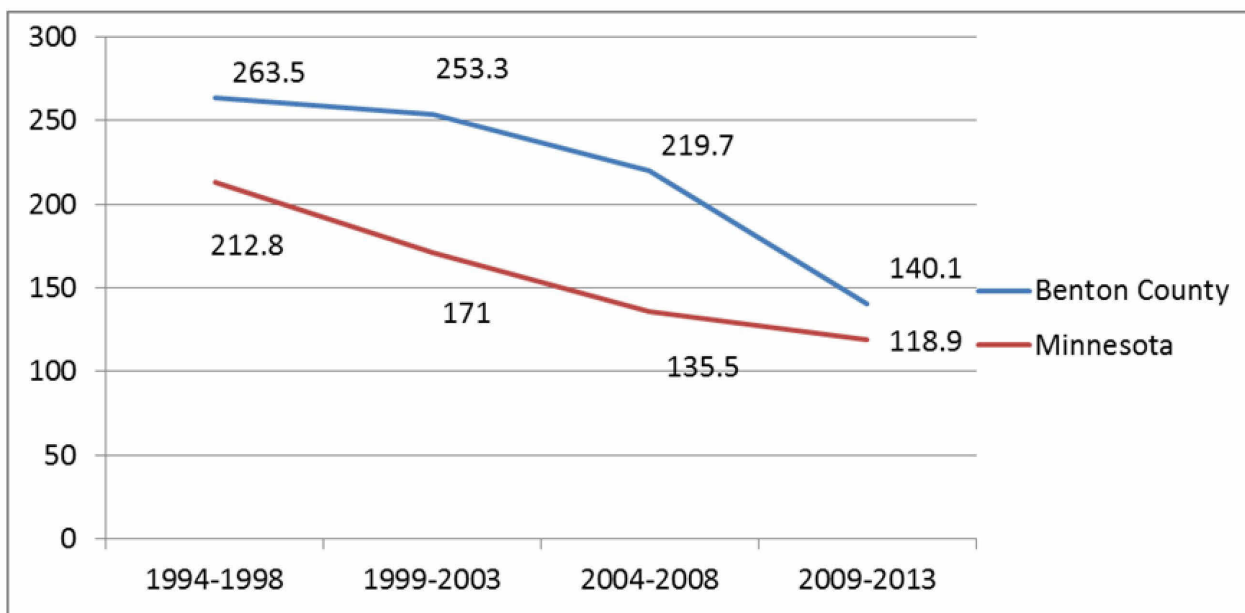
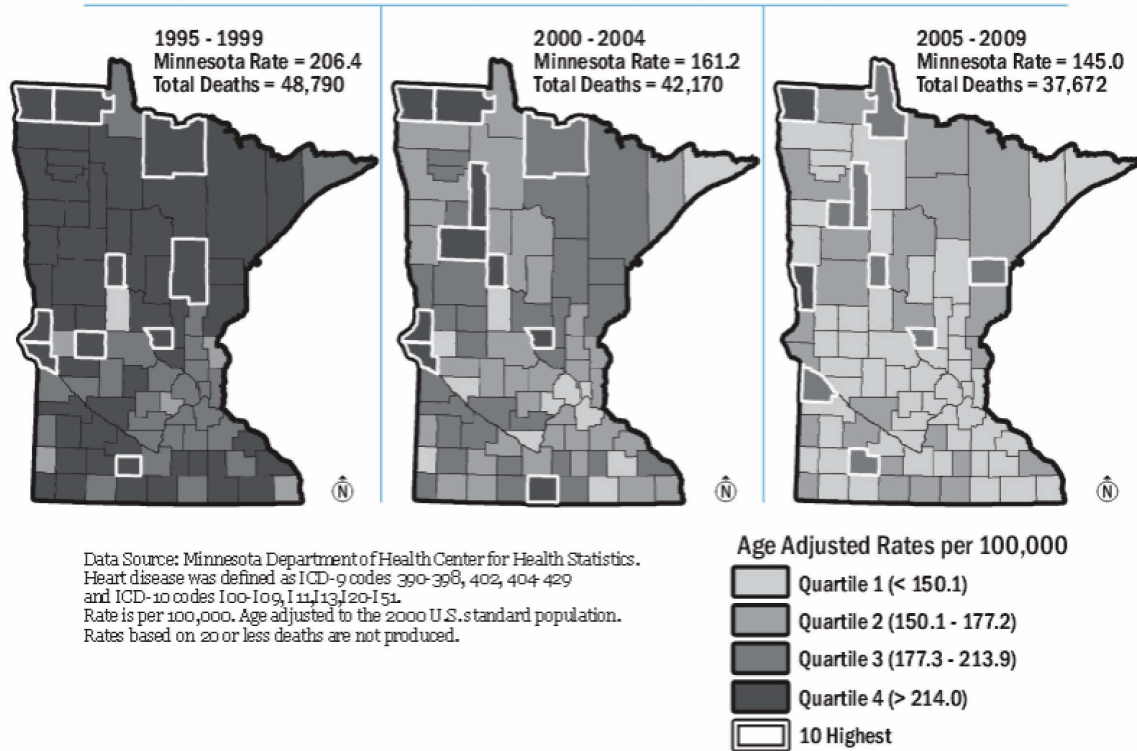


Figure 5.7. Heart Disease Mortality, Age Adjusted by County, 1995 through 2009



### Tuberculosis Cases in Benton County 2006-2014

Year	2006	2007	2008	2009	2010	2011	2012	2013	2014
TB Cases	0	0	1	1	0	0	1	0	1

<http://www.health.state.mn.us/divs/idepc/diseases/tb/stats.html>

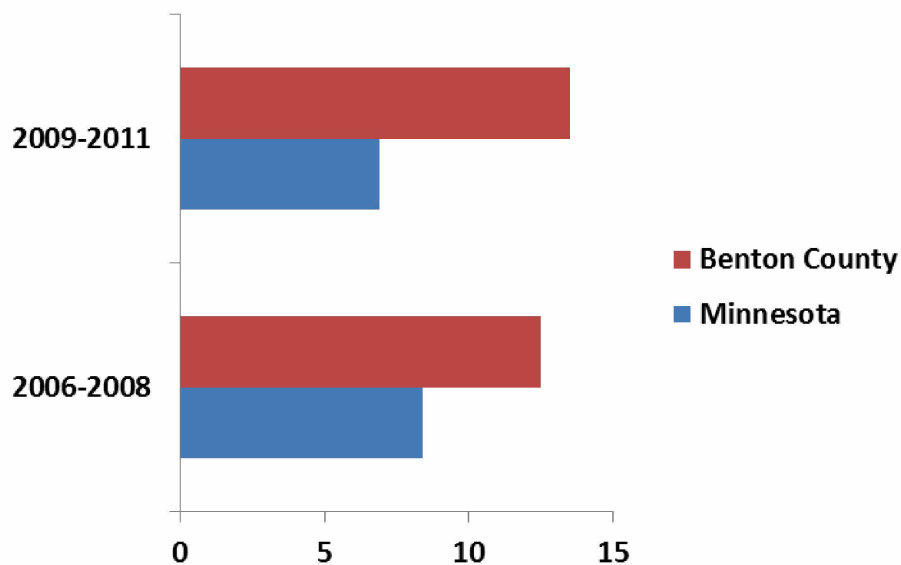
**Morbidity Table 11: COPD Hospitalizations: Age-adjusted Rates per 10,000 for 45 years of age and older By State and County, 2009-2011**

State/County/CHB	Three-Year Total Population	Hospitalizations		95% Confidence Interval
		Number	Rate <sup>1</sup>	
<b>Minnesota</b>	<b>6,376,428</b>	<b>19,650</b>	<b>32.8</b>	<b>32.3 - 33.2</b>
Aitkin	58,544	165	25.4	21.5 - 29.4
Anoka	759,890	959	16.1	15.0 - 17.2
Becker	91,578	151	15.9	13.4 - 18.5
Beltrami	102,296	169	17.2	14.5 - 19.8
Benton	83,090	275	35.5	31.3 - 39.8
Big Stone	17,428	15	6.8 (UR)	3.8 - 11.4
Blue Earth	129,384	219	17	14.7 - 19.3
Brown	74,188	92	10.8	8.6 - 13.3
Carlton	93,348	173	18.6	15.8 - 21.4
Carver	196,906	188	13.2	11.2 - 15.1

	Asthma (9th graders) (percent)		
	2007	2010	2013
<b>MN</b>	17.5	17.5	17.5
<b>Benton</b>	19.5	21.1	15.5
<b>source</b>	MN Center for Health Statistics, Student Survey (Health and Safety section)		
<b>link</b>	<a href="http://www.health.state.mn.us/divs/chs/mss/">http://www.health.state.mn.us/divs/chs/mss/</a> Statewide Tables by Educational Settings: Regular Public Schools by Gender/County Tables		
<b>notes</b>	Survey question: Have you ever been told by a doctor that you have asthma?; Yes/No Survey question new in 2007. Percent is calculated by finding the number of students by taking the percent given (M or F) X total number of M or F / 100. Add M and F total and divide by total number of participants in the survey.		

Source: [Minnesota Public Health Data Access](#)

Asthma Hospitalizations: Query Results (Rate per 10,000)



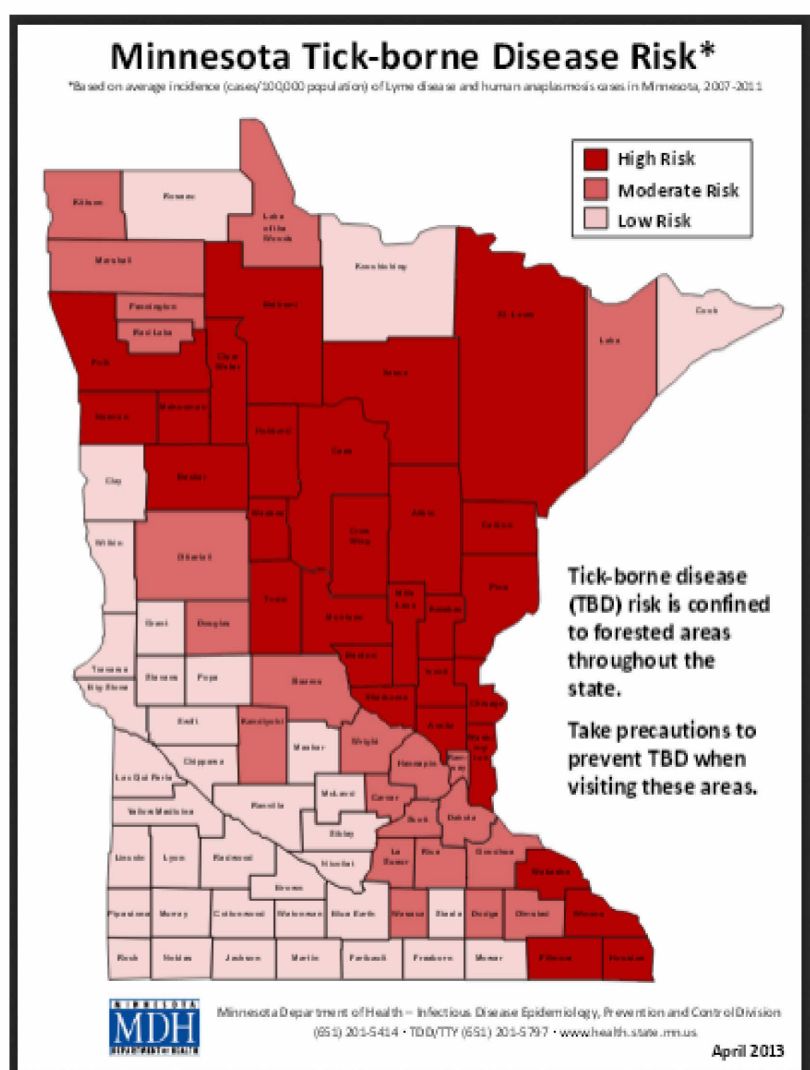
## Cancer Incidence

Source: MN Public Health Data Access

Indicator (2007-2011)	Notes	Benton	Minnesota
Bladder	Age-adjusted rate per 100,000	13.6	22.6
Brain and other nervous system	Age-adjusted rate per 100,000	8.7	6.6
Breast	Age-adjusted rate per 100,000	118.6	130.7
Chronic lymphocytic leukemia	Age-adjusted rate per 100,000	4.7	6.4
Colorectal	Age-adjusted rate per 100,000	46.0	42.8
Esophagus	Age-adjusted rate per 100,000	3.2	4.9
Kidney	Age-adjusted rate per 100,000	18.7	15.8
Larynx	Age-adjusted rate per 100,000	4.2	3.1
Leukemia	Age-adjusted rate per 100,000	14.8	15.7
Liver and bile duct	Age-adjusted rate per 100,000	1.5	4.9
Lung and bronchus	Age-adjusted rate per 100,000	62.4	56.5
Melanoma	Age-adjusted rate per 100,000	26.4	26.1
Mesothelioma	Age-adjusted rate per 100,000	0.5	1.3
Non-Hodgkin lymphoma	Age-adjusted rate per 100,000	21.1	23.2
Oral and pharyngeal	Age-adjusted rate per 100,000	12.9	11.8
Pancreas	Age-adjusted rate per 100,000	10.7	10.8
Thyroid	Age-adjusted rate per 100,000	9.4	11.8
<b>All types of cancer combined</b>		<b>461.0</b>	<b>475.1</b>

**Morbidity Table 4: Number of Cases of Other Selected Diseases Reported in Minnesota By State and County, 2012**

County/CHB/State	Campylobacteriosis	Giardiasis	Lyme Disease <sup>1</sup>	Human Anaplasmosis <sup>1</sup>	West Nile <sup>2</sup>	Salmonellosis	Shigellosis	Tuberculosis
<b>State of Minnesota</b>	<b>954</b>	<b>633</b>	<b>912</b>	<b>507</b>	<b>70</b>	<b>786</b>	<b>394</b>	<b>162</b>
Aitkin	2	1	7	18	0	1	1	5
Anoka	45	13	76	22	1	53	7	0
Becker	4	2	13	17	0	2	8	2
Beltrami	6	3	18	32	1	11	23	1
Benton	14	6	9	4	0	8	15	0
Big Stone	3	0	1	0	1	0	0	1
Blue Earth	7	7	1	1	0	7	1	0
Brown	3	3	1	0	4	9	0	0
Carlton	4	5	15	12	0	2	0	0
Carver	12	9	4	0	1	5	5	0
Cass	6	4	23	15	1	2	9	0
Chippewa	4	2	0	0	4	2	1	0
Chisago	7	5	15	4	0	9	2	1





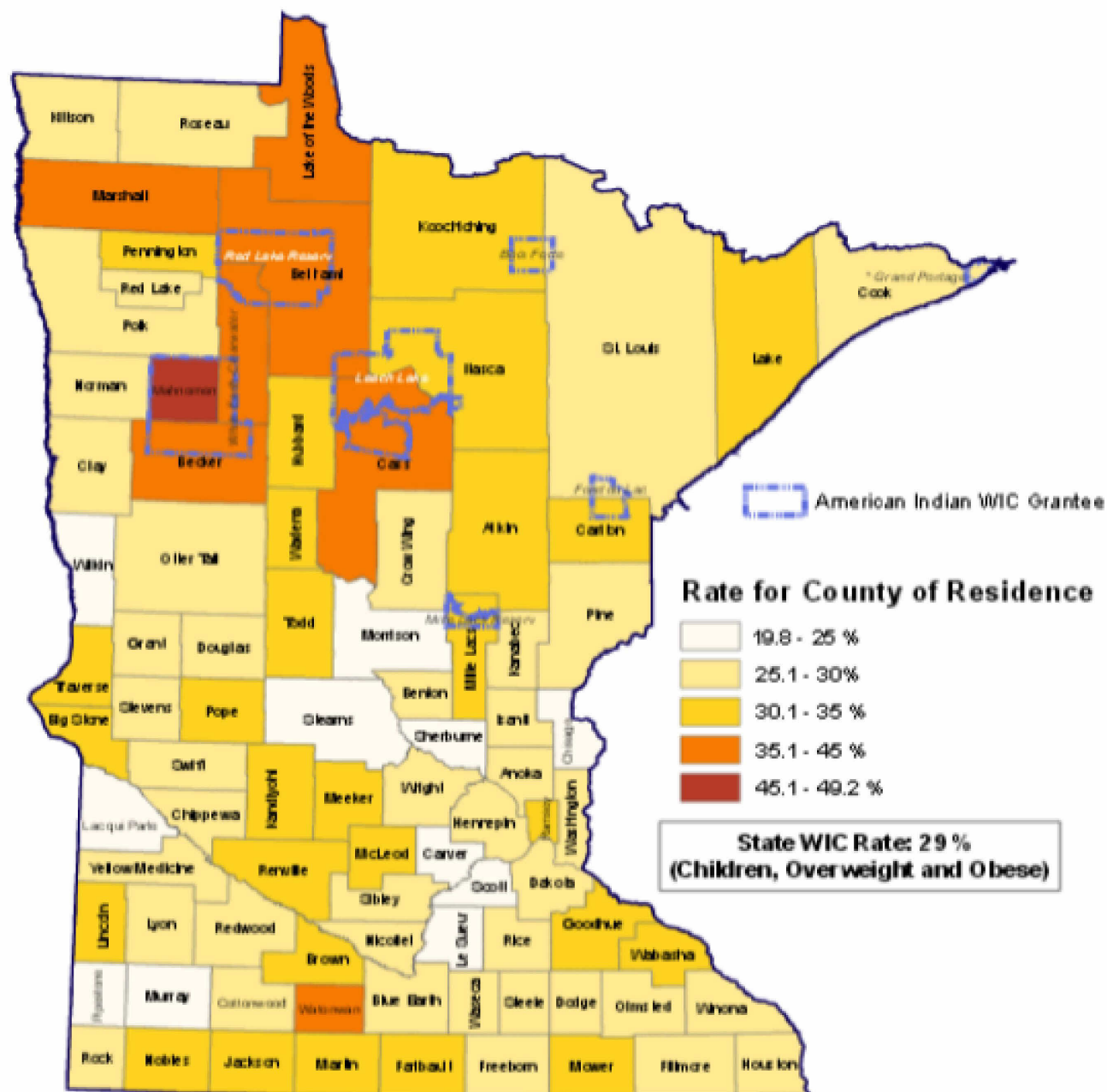
**Morbidity Table 18: Minnesota Behavioral Risk Factors<sup>^</sup> of Adults -  
County Synthetic Estimates and State Estimates, 2012\***

State/County	Estimated Percent of:				
	Overweight (Not Obese)**	Obese	Current Smokers	Acute Drinking	Chronic Drinking
State of Minnesota	37.3	25.9	18.8	22.1	6.3
Aitkin	38.7	27.3	16.2	17.2	5.8
Anoka	37.1	26.3	19.4	23.0	6.5
Becker	37.8	26.6	17.8	20.2	6.1
Beltrami	36.4	25.1	18.8	22.5	6.4
Benton	36.8	25.5	19.3	23.3	6.4
Big Stone	38.2	26.3	16.4	17.9	5.8
Blue Earth	35.2	23.5	19.4	24.4	6.5
Brown	37.4	25.8	17.6	20.2	6.1
Carlton	37.8	26.4	18.6	21.8	6.3
Carver	37.2	26.4	19.4	23.1	6.5
Cass	38.3	27.0	17.1	18.9	6.0

**Morbidity Table 12: County-Level Estimates of Leisure Time Physical Inactivity,  
Diabetes Prevalence and Obesity Among Adults Aged ≥ 20 years, Minnesota 2010**

State/County	Leisure Time Physical Inactivity <sup>1</sup>			Diabetes Prevalence <sup>2</sup>			Obesity <sup>3</sup>		
	Percent	CI <sup>4</sup>		Percent	CI <sup>4</sup>		Percent	CI <sup>4</sup>	
		Lower	Upper		Lower	Upper		Lower	Upper
Minnesota <sup>5</sup>	19.1	17.7	20.5	6.7	5.9	7.5	25.4	23.6	27.1
Aitkin	23.5	18.6	28.4	10.1	7.6	13.0	27.4	22.7	32.6
Anoka	22.4	20.2	24.8	8.3	7.2	9.6	30.7	28.2	33.2
Becker	23.7	19.7	28.1	8.2	6.3	10.4	27.9	23.6	32.7
Beltrami	23.8	20.2	27.6	8.3	6.6	10.1	28.3	24.6	32.4
Benton	22.0	17.3	27.2	9.0	6.8	11.7	29.1	23.8	34.9
Big Stone	23.6	17.1	30.9	8.7	6.3	11.7	28.4	22.0	35.3
Blue Earth	23.9	19.7	28.6	6.2	4.6	8.0	25.2	20.6	30.0
Brown	23.6	18.8	28.9	8.5	6.5	11.0	28.7	23.7	34.3
Carlton	20.9	16.8	25.7	8.1	6.2	10.4	27.9	23.2	33.2
Carver	17.1	13.9	20.4	6.7	5.2	8.5	24.7	21.0	28.8
Cass	21.3	17.5	25.3	10.2	8.1	12.8	28.4	24.0	33.3

# Obesity and Overweight Status in Children Aged 2-5 years Participating in MN-WIC, 2013



**MINNESOTA**  
WOMEN, INFANTS  
& CHILDREN  
NUTRITION PROGRAM

For more information, contact  
MN-WIC: 1-800-657-3942

Maggie.Donohue@state.mn.us  
Joel.Goppert@state.mn.us  
Deb.Grandmaisk@state.mn.us

September 2014

Child Obesity and Overweight Status: BMI ≥ 85th percentile for age

Data collected in WIC clinics in geographic areas shown.

Source: Minnesota WIC Information System, 2013. Weight status of children ≥ 2.

Suggested Citation: Minnesota WIC Program, Obesity and Overweight Status  
in Children Aged 2-5 years Participating in MN-WIC by County of Residence, 2013.  
[map] Reference Scale 1:3,188,615, using ArcGIS. St.Paul: Minnesota WIC, 2014.

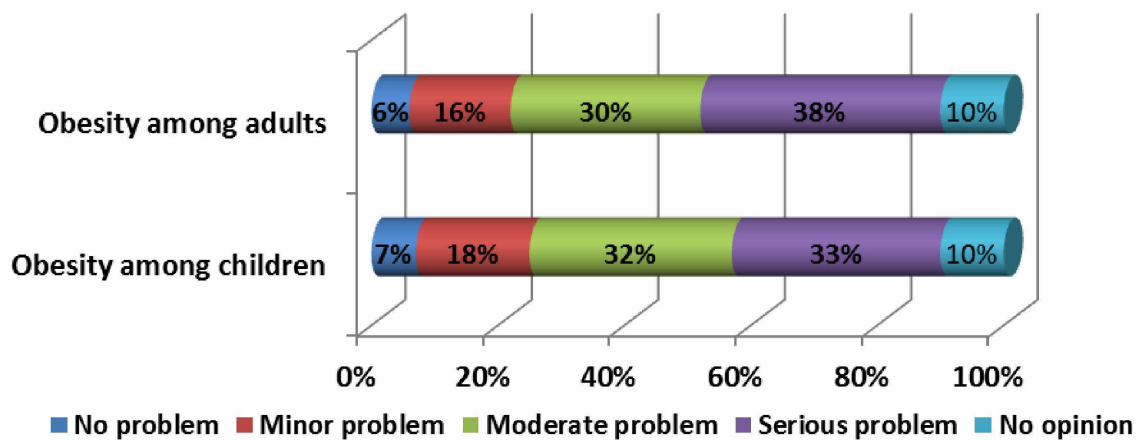
**Nutrition**\*All questions new in 2013

**Source: 2013 Minnesota Student Survey**

	<b>Health habits: Questions related to Nutrition</b>		
	<b>2013</b>	<b>2016</b>	<b>2019</b>
<b>3-4 servings of Fruit yesterday</b>	<b>11.8%</b>		
<b>3-4 servings of Vegetables yesterday</b>	<b>20.1%</b>		
<b>Eating from a fast food restaurant (including take-out &amp; delivery ) 1-2 times in the past 7 days</b>	<b>51.1%</b>		
<b>Drink regular pop or soda once per day</b>	<b>14.4%</b>		
<b>Drink water more than once per day</b>	<b>82.7%</b>		
<b>Drink sugar sweetened drinks once per day</b>	<b>19.2%</b>		

**Community perceptions of chronic health conditions related to obesity**

**Source: Central MN Community Health Survey-February 2013**



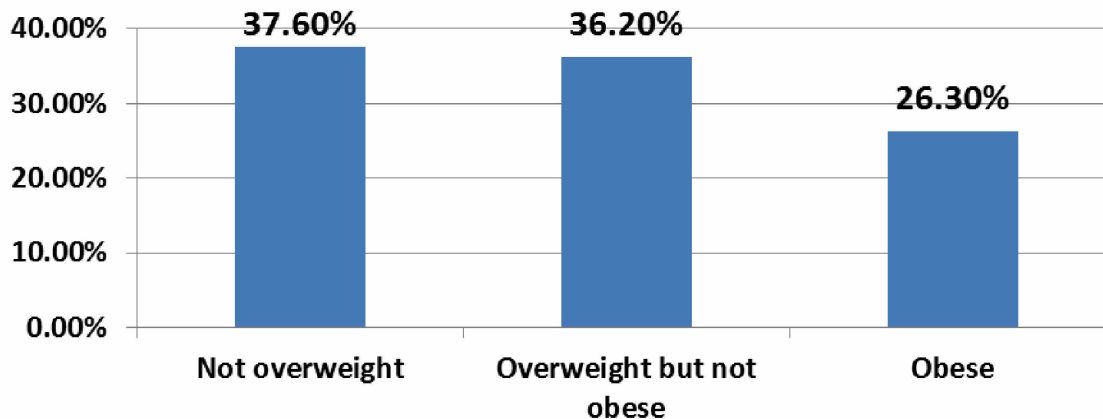
	Overweight or obese (based on BMI) (9th graders) (percent)		
	2007	2010	2013
<b>MN</b>	22	22	23
<b>Benton</b>	26	27	27

MN Center for Health Statistics, MN Student Survey (Section Health and Safety) This information was only collected from the 2007 and 2010 survey

**source** <http://www.health.state.mn.us/divs/chs/mss/singleyr/index.html>

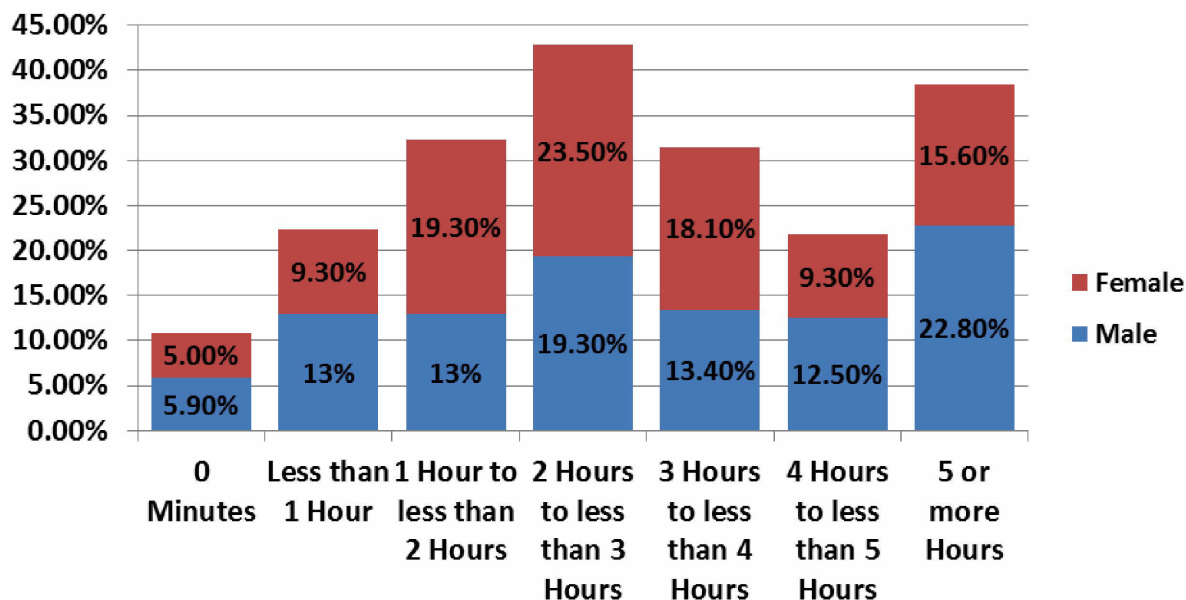
**notes** "Body Mass Index (BMI) is a number calculated from a child's self-reported weight and height. BMI can be used as a screening tool to identify possible weight problems for children and teens. The BMI number is calculated using a standard formula. BMI-for-age percentiles are used to interpret BMI numbers because, unlike adults, BMI is both age- and-sex-specific for children and teens. The CDC BMI-for-age growth charts take into account these differences and allow translation of a BMI number into a percentile for a child's sex and age. The CDC growth charts were used to determine weight status according to BMI for participants in the MSS." - MCHS  
 Not overweight: Less than the 85th percentile  
 Overweight: 85th to less than the 95th percentile Obese: Equal to or greater than 95<sup>th</sup> percentile

### Weight status according to BMI among Benton County residents Source: Central MN Community Health Survey-February 2013



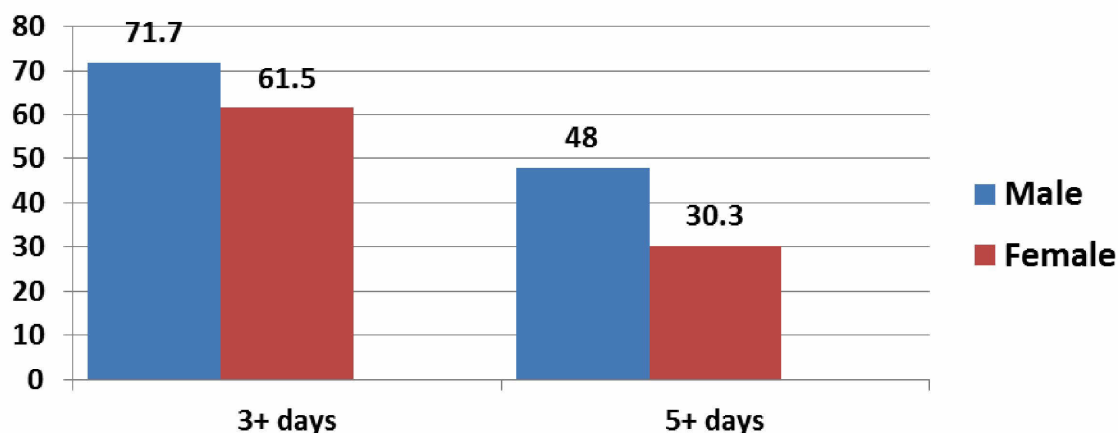
On average, while you are not at work or school, how much time per day do you use a computer, tablet, TV, or smart phone for reading, playing games, surfing the internet, or watching programs or movies?

Source: Central MN Community Health Survey-February 2013



During an average week, whether at work, at home or anywhere else, on how many days do you get at least 30 minutes of moderate physical activity?

Source: Central MN Community Health Survey-February 2013



**\*All questions on this table were new in 2013**

**Source: Minnesota Study Survey 2013, Use of Time**

During a typical school day, how many hours do you do each of the following outside of school?		<b>2013</b>	
		<b>9<sup>th</sup> grade</b>	
		<b>MN</b>	<b>Benton</b>
		<b>%</b>	<b>%</b>
Watch TV shows, movies, or videos on a TV, computer or phone	0 hours	9	8
	1 hour	33	37
	2 hours	28	30
	3 to 5 hours	19	19
	6 or more hours	11	8
Talk on the phone or use an app	0 hours	24	27
	1 hour	35	34
	2 hours	19	21
	3 to 5 hours	12	12
	6 or more hours	10	7
Text	0 hours	25	26
	1 hour	27	30
	2 hours	13	12
	3 to 5 hours	13	9
	6 or more hours	22	23
Play video or online games	0 hours	50	48
	1 hour	22	23
	2 hours	13	12
	3 to 5 hours	8	8
	6 or more hours	7	9
Use the computer	0 hours	31	39
	1 hour	35	33
	2 hours	16	14
	3 to 5 hours	10	8
	6 or more hours	8	8



## Self –inflicted injury; suicidal thoughts and suicidal behavior

Source: 2013 Minnesota Student Survey

Self –inflicted injury; Suicidal thoughts and Suicidal behavior		Grade					
		8th		9th		11th	
		Male	Female	Male	Female	Male	Female
		%	%	%	%	%	%
During the last 12 month, how many times did you do something to purposely hurt or injure yourself without wanting to die, such as cutting, burning, or bruising yourself on purpose?	0 times	78%	73%	93%	76%	89%	91%
	1 or 2 times	6%	12%	4%	12%	3%	3%
	3 to 5 times	8%	3%	1%	4%	1%	3%
	6 to 9 times	3%	5%	0%	3%	2%	2%
	10 to 19 times	1%	4%	1%	1%	1%	0%
	20 or more times	5%	4%	1%	4%	4%	2%
Have you ever seriously considered attempting suicide? (Mark all that apply)	No	81%	74%	83%	76%	86%	77%
	Yes, during the last year	13%	22%	9%	15%	6%	8%
	Yes, more than a year ago	10%	7%	10%	13%	10%	18%
Have you ever attempted suicide? (Mark all that apply)	No	94%	90%	96%	92%	94%	95%
	Yes, during the last year	4%	8%	1%	4%	2%	2%
	Yes, more than a year ago	2%	3%	4%	4%	5%	4%

\*All questions on this table were new in 2013

	Physical violence in the household (9th graders) (percent)				
	1998	2001	2004	2007	2010
MN	12	11	12	11	10
Benton	10	9	11	12	9

source MN Center for Health Statistics, Student Survey (Risk Factors Section)

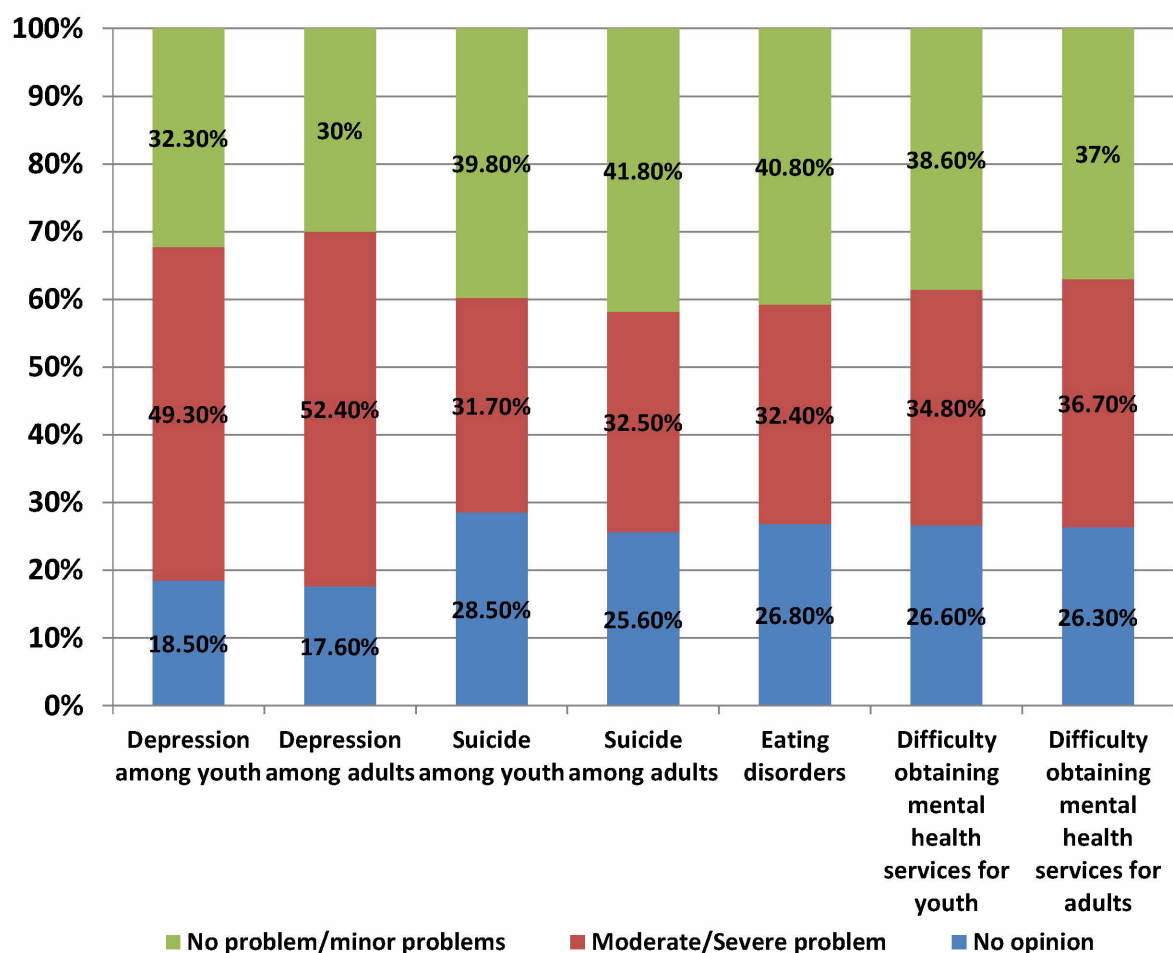
link <http://www.health.state.mn.us/divs/chs/mss/singleyr/index.html>

notes Survey question - Has any adult in your household ever hit you so hard or so often that you had marks or were afraid of that person?; answers: yes/no

\*New questions asked in 2013.

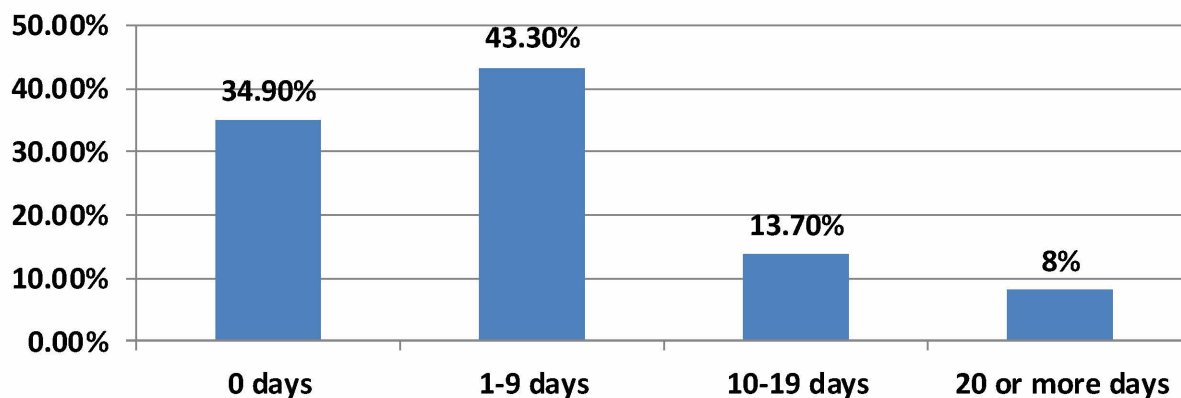
**In your county, how much of a problem is....various topics related to mental health.**

Source: Central MN Community Health Survey-February 2013



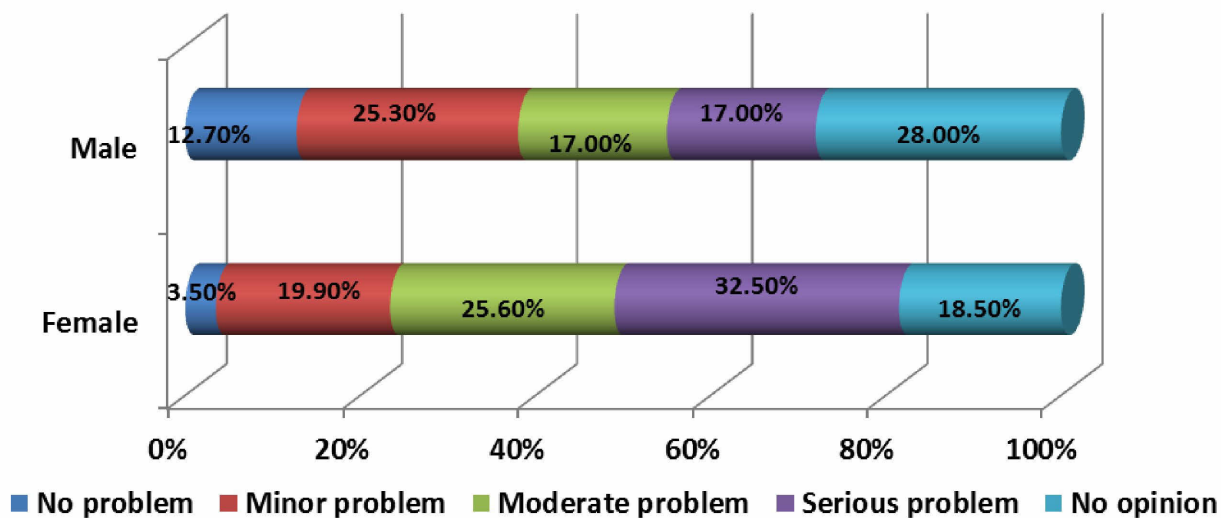
**During the past 30 days, for about how many days have you felt sad, blue or depressed?**

Source: Central MN Community Health Survey-February 2013

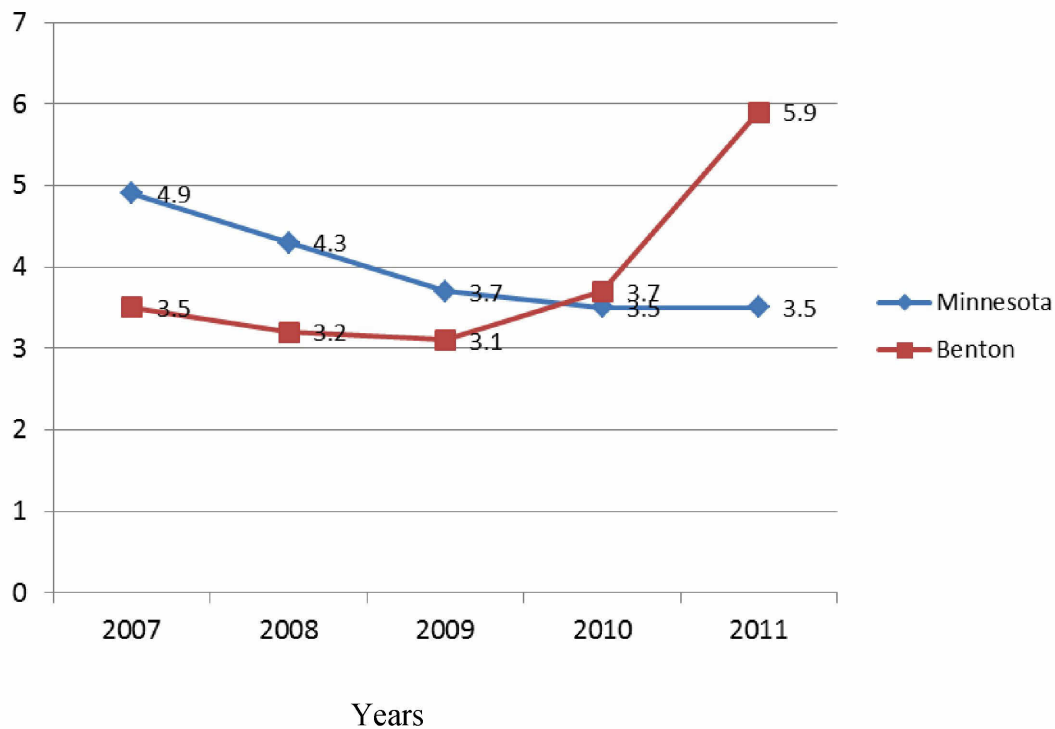


## In your opinion, how much of a problem is each of these issues in your county? Mental Illness

Source: Central MN Community Health Survey-February 2013



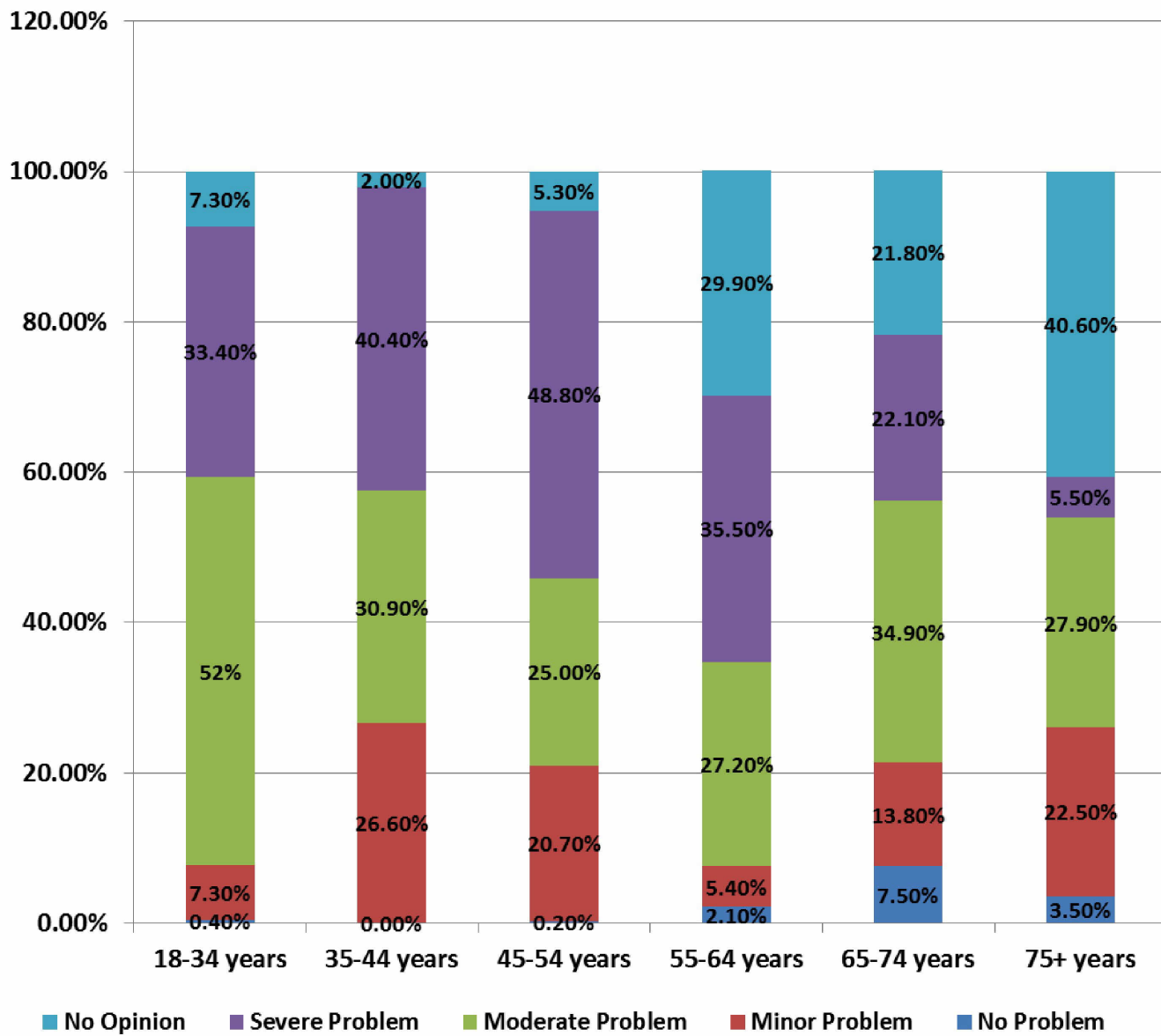
## Benton County Rate of Reported Cases of Child Abuse/Neglect per 1,000 children under 18



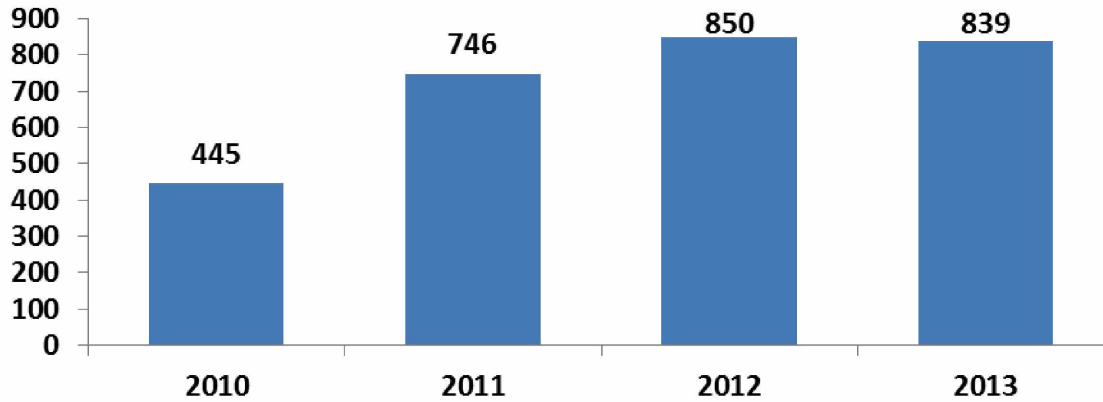
The rate is the number of these children (for whom a report of child abuse or neglect was substantiated by a county child protection worker) divided by the estimated total number of children and multiplied by 1,000. Data Source: Minnesota Department of Human Services, Minnesota's Child Welfare Report (annual).

**In your opinion, how much of a problem is each of these issues in your county? Parents with inadequate or poor parenting skills?**

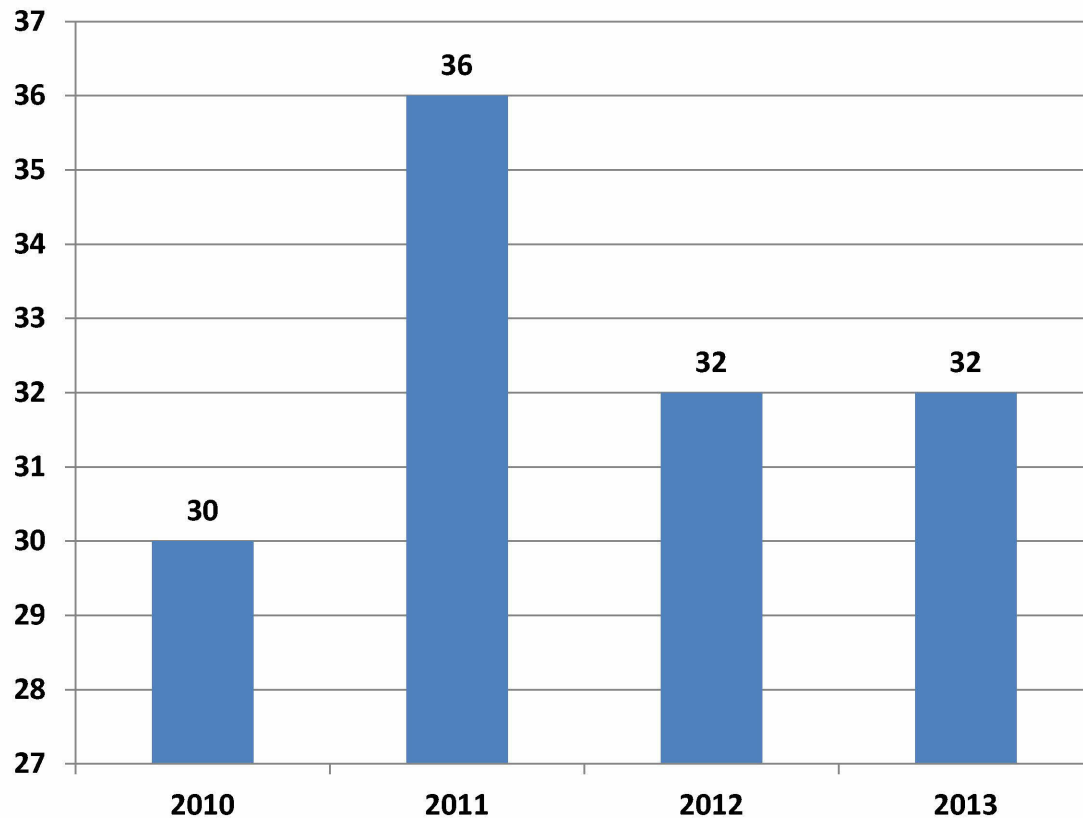
**Source: Central MN Community Health Survey-February 2013**



**Number of Child Maltreatment Reports Received during year**  
Source: Minnesota Department of Human Services, Benton County Child Protection Unit



**Number of Maltreatment Determinations during year**  
Source: Minnesota Department of Human Services, Benton County Child Protection Unit



# Opportunities for Health

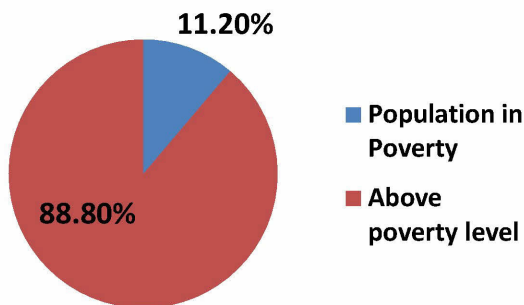
		Poverty status by age in the past 12 months	
		2008-2012	
		Population for whom poverty status is determined (estimate)	Percent below poverty level (estimate)
<b>MN</b>	<b>total</b>	5,191,097	<b>11.2</b>
	<b>&lt;18 years</b>	1,263,116	<b>14.3</b>
	<b>18-64 years</b>	3,269,191	<b>10.6</b>
	<b>65 and over</b>	658,790	<b>8.3</b>
<b>Benton</b>	<b>total</b>	37,980	<b>14.6</b>
	<b>&lt;18 years</b>	9,480	<b>18.1</b>
	<b>18-64 years</b>	24,274	<b>13.8</b>
	<b>65 and over</b>	4,226	<b>11.1</b>
<b>source</b>	U.S. census (www.census.gov), 2007-2011 America Community Survey 5-year estimates (ACS) (Table S1701, Poverty Status in the Past 12 months)		
<b>link</b>	<a href="http://factfinder2.census.gov/faces/nav/jsf/pages/index.xhtml">http://factfinder2.census.gov/faces/nav/jsf/pages/index.xhtml</a>		
<b>notes</b>	"Data are based on sample and are subject to sampling variability. The degree of uncertainty for an estimate arising from sampling variability is represented through the use of a margin of error. The value shown here is the 90 percent margin of error. The margin of error can be interpreted roughly as providing a 90 percent probability that the interval defined by the estimate minus the margin of error and the estimate plus the margin of error (the lower and upper confidence bounds) contain the true value in addition to sampling variability, the ACS estimates are subject to nonsampling error (for a discussion of nonsampling variability, see Accuracy of the Data). The effect of nonsampling error is not represented in these tables" U.S. Census Bureau		



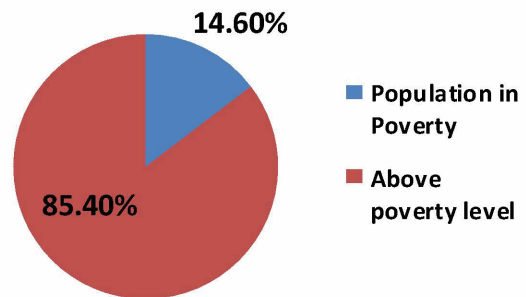
### Poverty status by age in the past 12 months



### Minnesota



### Benton County

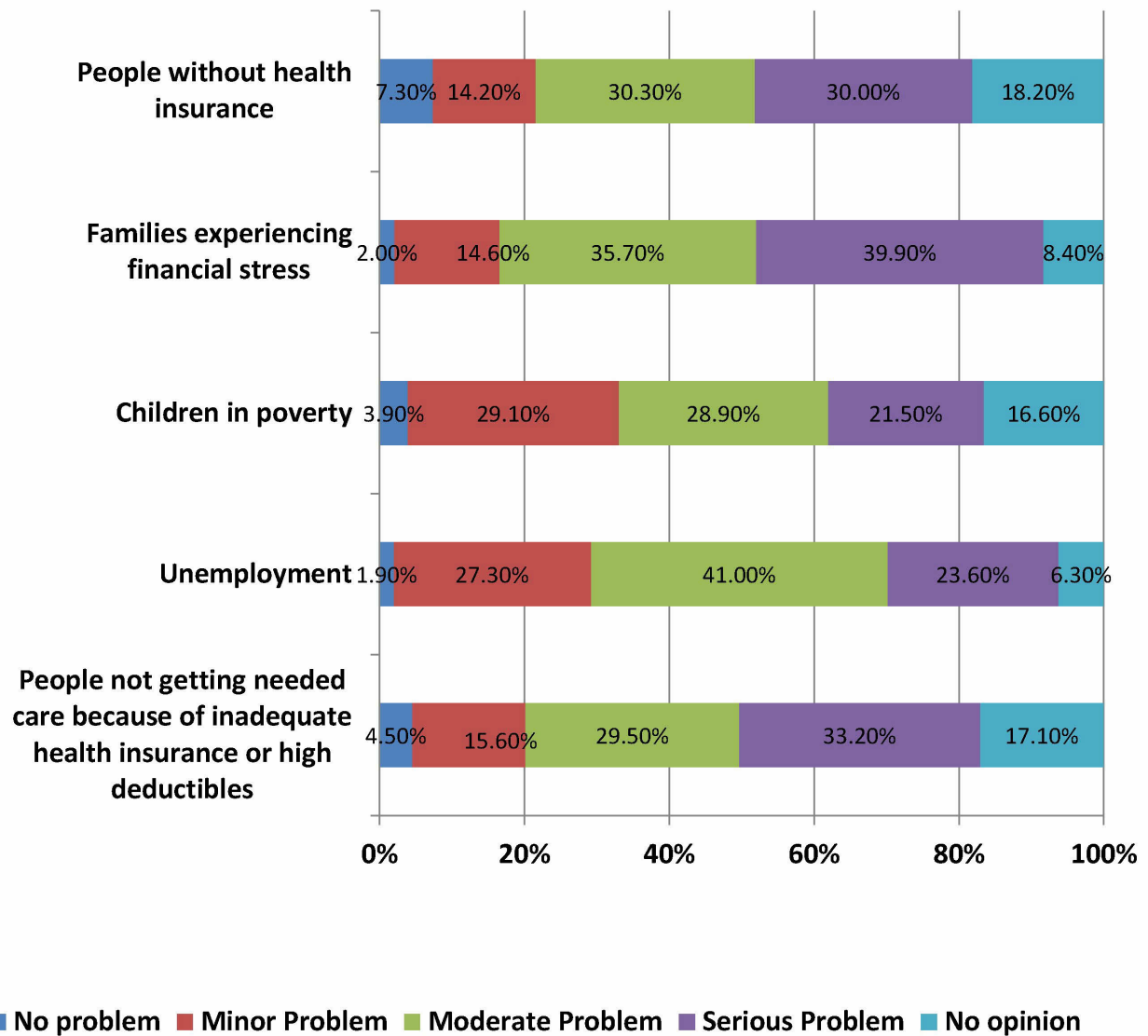


Source: U.S. census ([www.census.gov](http://www.census.gov)), 2007-2011 America Community Survey 5-year estimates (ACS) (Table S1701, Poverty Status in the Past 12 months)

		Persons ever eligible during year for Medical Assistance (MA); Persons ever eligible during year for MinnesotaCare (MNCare)		
		2010	2011	2012
MN	MA	775,568	909,212	930,310
	MNCare	201,206	218,911	180,110
Benton	MA	5,936	6,957	7,064
	MNCare	1,667	1,783	1,352
Original source	Minnesota Department of Human Services			
link	<a href="http://mn.gov/dhs/">http://mn.gov/dhs/</a> Go to Reports and Forecasts			

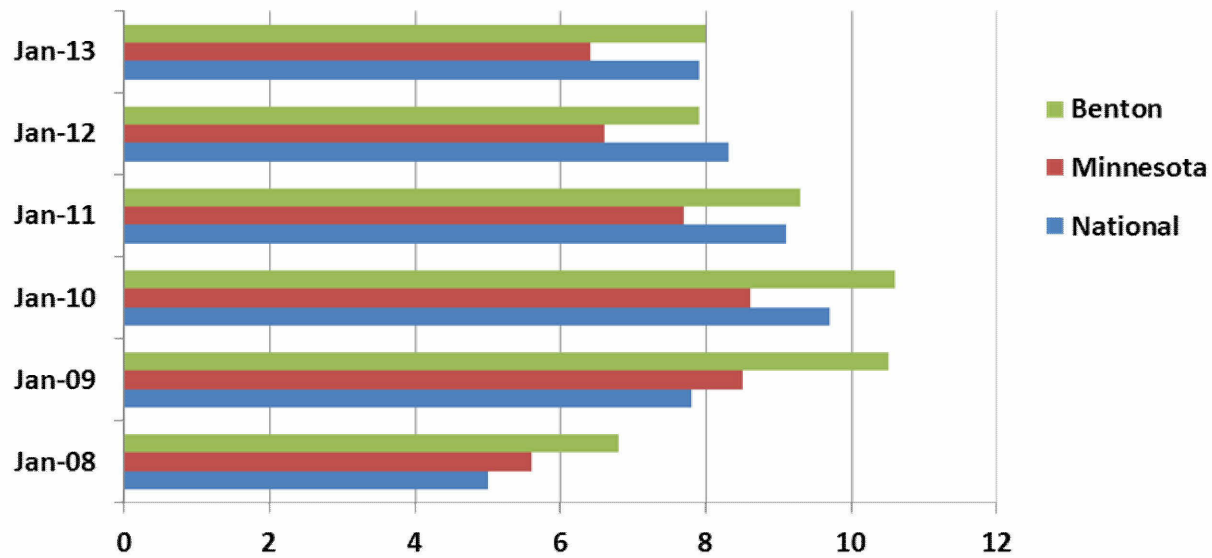
**In your opinion, how much of a problem is each of these issues in your county? Various financial concerns.**

**Source: Central MN Community Health Survey-February 2013**



## Unemployment Rates

Source: Home Facts



		Per capita income (\$) and Unemployment (ave annual percent)					
		2007	2008	2009	2010	2011	2012
MN	income	41,105	42,927	44,094	44,871	46,069	46,925
	unemployment	4.6	5.4	8.1	7.3	6.4	5.6
Benton	income	29,048	36,349	35,362	35,446	35,882	37,419
	unemployment	5	6	8.8	8	7	6.1
original source	Per capita income: U.S. Department of Commerce, Bureau of Economic Analysis ( <a href="http://www.bea.gov/index.htm">http://www.bea.gov/index.htm</a> )						
	Avg annual unemployment: MN Department of Employment and Economic Development, <a href="http://www.deed.state.mn.us/lmi/tools/laus.htm">www.deed.state.mn.us/lmi/tools/laus.htm</a>						
local source	MN Center for Health Statistics, <i>Minnesota State, County, and Community Health Board Vital Statistics Trend Report 1991-2010</i> (Socioeconomic Section)						
link	<a href="http://www.health.state.mn.us/divs/chs/trends/index.html">http://www.health.state.mn.us/divs/chs/trends/index.html</a>						
notes	*not available within the <i>Vital Statistics Trend Report 1991-2010</i> or easily accessible						

		Food stamp utilization (avg monthly number of households); Students eligible for free or reduced meals (percent)				
		2009-2010	2010-2011	2011-2012	2012-2013	2013-2014
<b>MN</b>	<b>food stamp utilization</b>	152,285	185,995	244,387	251,642	
	<b>eligibility for free/reduced lunch</b>	35.5	36.6	37.2	38.3	
<b>Benton</b>	<b>food stamp utilization</b>	939	1,286	884	1,903	
	<b>eligibility for free/reduced lunch</b>	32.4	32.1	32.7	33.7	
<b>original source</b>	Food stamp utilization: MN Department of Human Services					
	Eligibility for free/reduced meals: MN Department of Education					
<b>local source</b>	MN Center for Health Statistics, <i>Minnesota State, County, and Community Health Board Vital Statistics Trend Report 1991-2010</i> (Socioeconomics Section)					
<b>link</b>	<a href="http://www.health.state.mn.us/divs/chs/trends/index.html">http://www.health.state.mn.us/divs/chs/trends/index.html</a>					
<b>note</b>	* data is not available in the MN Center for Health Statistics, <i>Vital Statistic Trend Report</i>					
	the year noted is the first of the school year (not calendar year) for indicator: <i>Eligibility for free/reduced meals</i>					

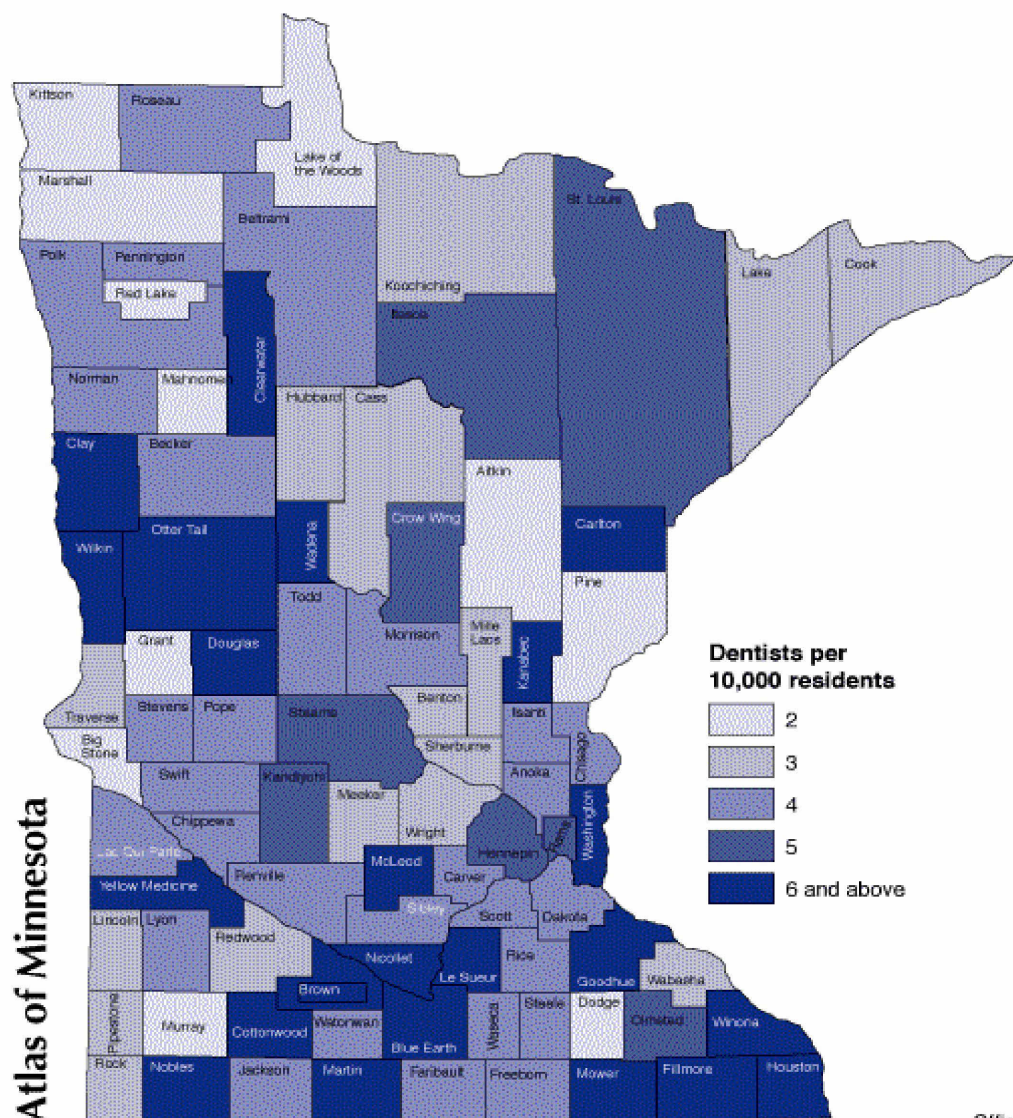
Educational attainment (2008-2012) (percent)		
	Attainment*	Percent of population 25 years and over (estimate)
<b>MN</b>	<b>less than 9th grade</b>	3.3
	<b>9th to 12th grade, no diploma</b>	4.8
	<b>high school graduate (includes equivalency)</b>	27.1
	<b>associate's degree</b>	10.0
	<b>bachelor's degree or higher</b>	32.3
<b>Benton</b>	<b>less than 9th grade</b>	4.1
	<b>9th to 12th grade, no diploma</b>	5.5
	<b>high school graduate (includes equivalency)</b>	34.1
	<b>associate's degree</b>	11.2
	<b>bachelor's degree or higher</b>	20.2
<b>source</b>	U.S. census ( <a href="http://www.census.gov">www.census.gov</a> ), 2006-2010 America Community Survey (ACS) (2006-2010 - 5 year estimates) (Table S1501)	
<b>link</b>	<a href="http://www.census.gov/acs/www/">http://www.census.gov/acs/www/</a>	
<b>notes</b>	*excludes category: "some college, no degree"; combines categories: "bachelor's degree" and "graduate or professional degree"	
	"Data are based on sample and are subject to sampling variability. The degree of uncertainty for an estimate arising from sampling variability is represented through the use of a margin of error. The value shown here is the 90 percent margin of error. The margin of error can be interpreted roughly as providing a 90 percent probability that the interval defined by the estimate minus the margin of error and the estimate plus the margin of error (the lower and upper confidence bounds) contain the true value." U.S. Census Bureau	

		<b>Poverty status in the last 12 months by educational attainment</b>	
		<b>2008-2012</b>	
		<b>Population (estimate)</b>	<b>Percent below poverty (estimate)</b>
<b>MN</b>	<b>total population 25 years and over</b>	3,525,850	<b>46.7</b>
	<b>less than high school graduate</b>	902,618	<b>25.6</b>
	<b>high school graduate (includes equivalency)</b>	370,214	<b>10.5</b>
	<b>some college, associate's degree</b>	267,964	<b>7.6</b>
	<b>bachelor's degree or higher</b>	105,776	<b>3.0</b>
<b>Benton</b>	<b>total population 25 years and over</b>	25,018	<b>45.7</b>
	<b>less than high school graduate</b>	5,054	<b>20.2</b>
	<b>high school graduate (includes equivalency)</b>	2,677	<b>10.7</b>
	<b>some college, associate's degree</b>	2,652	<b>10.6</b>
	<b>bachelor's degree or higher</b>	1,051	<b>4.2</b>
<b>original source</b>	U.S. Census Bureau, 2007-2011 American Community Survey		
<b>link</b>	<a href="http://www.census.gov/acs/www/">http://www.census.gov/acs/www/</a>		
<b>notes</b>	Within American FactFinder website search for table S1701 (Poverty Status in the Past 12 months)		
	"Data are based on sample and are subject to sampling variability. The degree of uncertainty for an estimate arising from sampling variability is represented through the use of a margin of error. The value shown here is the 90 percent margin of error. The margin of error can be interpreted roughly as providing a 90 percent probability that the interval defined by the estimate minus the margin of error and the estimate plus the margin of error (the lower and upper confidence bounds) contain the true value." U.S. Census Bureau		
	population estimates are calculated for whom poverty status is determined and age 25 years and over		

	<b>High school graduation rate (per 100 students)</b>			
	<b>2009-2010</b>	<b>2010-2011</b>	<b>2011-2012</b>	<b>2012-2013</b>
<b>MN</b>	75.9	76.8	77.6	78.4
<b>Benton</b>	85.1	83.9	89.3	88.4
<b>local source</b>	MN Center for Health Statistics, <i>Minnesota State, County, and Community Health Board Vital Statistics Trend Report</i> 1991-2010 (Education section)			
<b>link</b>	<a href="http://www.health.state.mn.us/divs/chs/trends/index.html">http://www.health.state.mn.us/divs/chs/trends/index.html</a>			
<b>notes</b>	"The four year graduation rate is a four-year, on-time graduation rate based on a cohort of first time grade students plus transfers into the cohort within the four year period minus transfers out of the cohort within the four year period." Minnesota Department of Education			

		Immunization rates among children age 24-35 months		
		2011	2012	2013
<b>MN</b>	<b>Series (4:3:1:3:3:1:3)</b>	<b>55.7</b>	<b>62.3</b>	<b>62.9</b>
	<b>DTaP (4)</b>	72.0	77.4	76.6
	<b>Polio (3)</b>	85.6	89.9	88.3
	<b>MMR (1)</b>	86.0	87.0	86.4
	<b>Hib (3)</b>	79.7	82.3	83.5
	<b>Hep B (3)</b>	79.6	84.5	83.6
	<b>Varicella (1)</b>	84.3	85.5	85.1
	<b>PCV (3)</b>	80.0	79.0	79.8
<b>Benton</b>	<b>Series (4:3:1:3:3:1:3)</b>	<b>55.3</b>	<b>62.5</b>	<b>69.4</b>
	<b>DTaP (4)</b>	71.5	72.7	78.4
	<b>Polio (3)</b>	90.5	85.5	84.7
	<b>MMR (1)</b>	86.7	86.2	92.9
	<b>Hib (3)</b>	77.3	86.1	91.5
	<b>Hep B (3)</b>	81.4	80.3	82.5
	<b>Varicella (1)</b>	80.4	86.1	91.9
	<b>PCV (3)</b>	86.1	80.3	85.7
<b>source</b>	MDH, Infectious Disease Epidemiology Prevention and Control Division, MIIC data (via the MN Public Health Data Access website) (accessed Jan 2013 for 2012 data; accessed Feb 2013 for 2010, 2011 data)			
<b>link</b>	<a href="https://apps.health.state.mn.us/mndata/immunization">https://apps.health.state.mn.us/mndata/immunization</a>			
<b>notes</b>	DTaP = Diphtheria, Tetanus, Pertussis; MMR= measles, mumps, rubella; Hib = <i>Haemophilus influenzae</i> type b; Hep B= Hepatitis B; PCV = pneumococcal conjugate vaccine			
	a Hib vaccine shortage took place from 2007-2009			



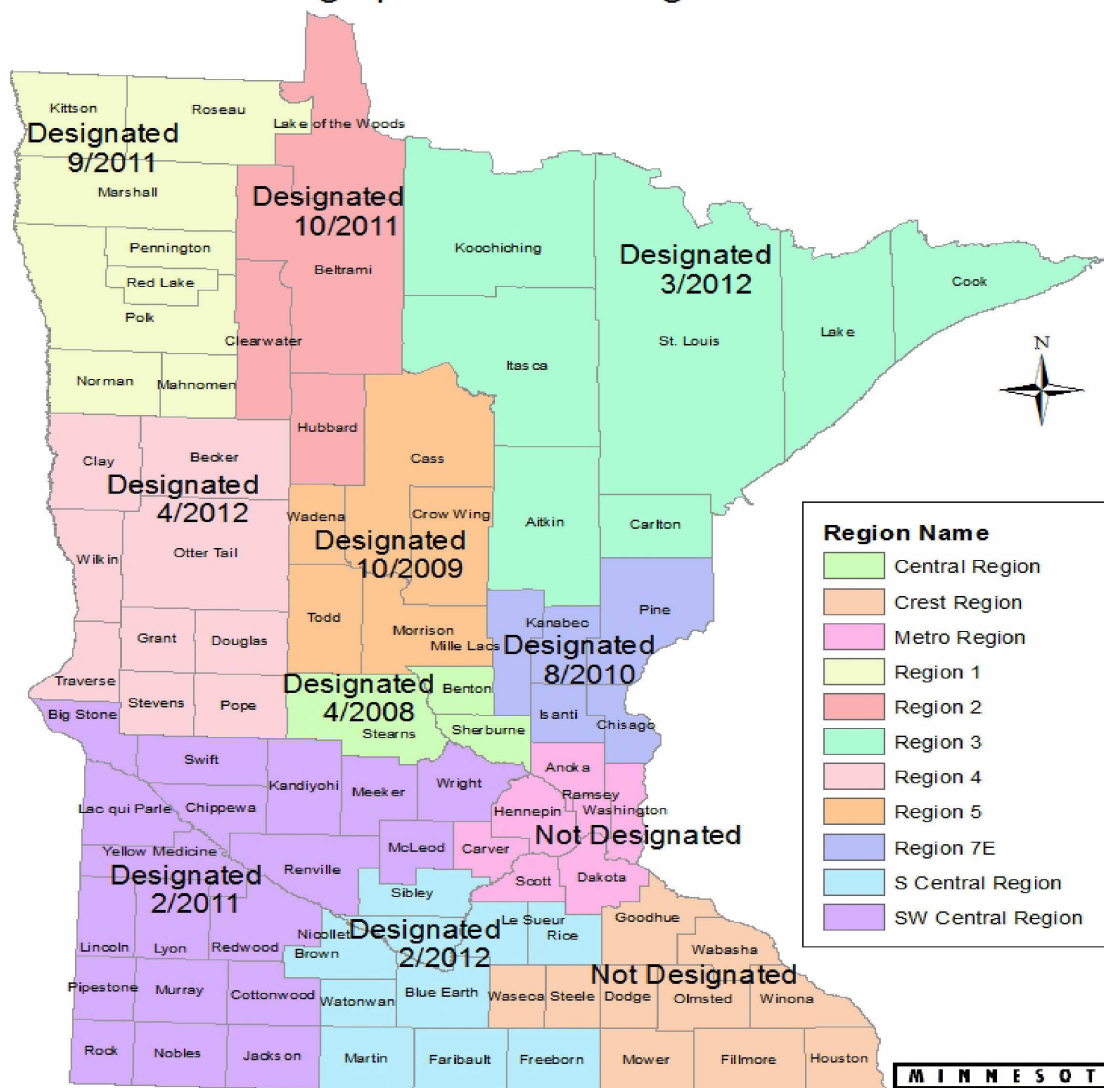


Atlas of Minnesota

Data source:  
Minnesota Department of Health,  
Office of Rural Health and Primary Care  
© Center for Rural Policy and Development

# MN Rational Service Areas - Mental Health

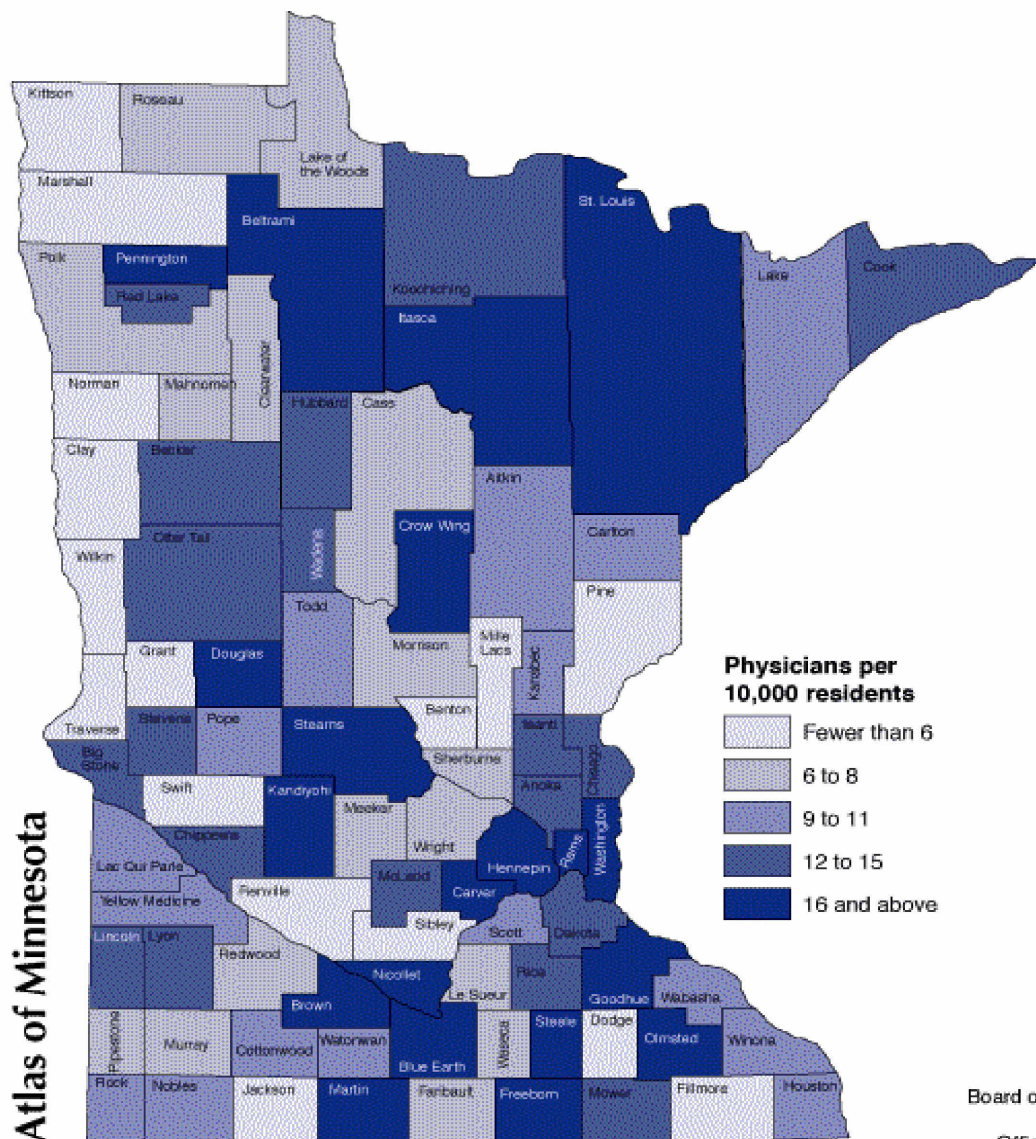
## Geographic HPSA Designations



Source: Minnesota Department of Health  
Office of Rural Health, Jan 2013  
HPSA designations 1\_2013.mxd

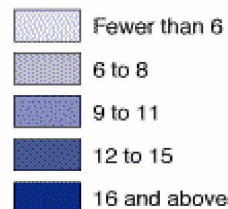






## Physicians, 2011

### Physicians per 10,000 residents



Data source:  
Board of Medical Practices, as prepared by  
Minnesota Department of Health  
Office of Rural Health and Primary Care  
© Center for Rural Policy and Development

**original source** MN Center for Rural Policy and Development (Atlas online)

**source**

**local source** MDH ORHPC

**link** <http://www.ruralmn.org/atlas-outline/?tab=6&report=103>

**notes** "As the map shows, physicians are concentrated in counties with large hospitals, but not necessarily large cities. On the other hand, the shortage of physicians in some areas is apparent. Some are explainable, such as counties adjacent to a county with a large facility (Sherburne and Benton next to St. Cloud, Dodge and Fillmore adjacent to Rochester, and Clay adjacent to Fargo). However, there is a distinct drop off in many rural counties. The data for practicing physicians is gathered via mailing address. This technique has been shown to be a reliable proxy when looking at county data. Since many physicians do not report their work site to the Minnesota Board of Medical Practices, this new analysis is necessary to best understand the physician population in the state."

# Environmental Health

**[http://www.soilandwater.org/images/SWCD/pdf/reporting/annual-reports/2013\\_Annual\\_Report.pdf](http://www.soilandwater.org/images/SWCD/pdf/reporting/annual-reports/2013_Annual_Report.pdf)**

## **Water Quality**

### **BENTON COUNTY COMPREHENSIVE LOCAL WATER MANAGEMENT PLAN 2008-2018**

<http://www.co.benton.mn.us/news/documents/LWMP%20-%20Part%201.pdf>

This 47 page plan outlines priorities with related goals and actions for Benton County water management. The three priority concerns selected were:

1. Feedlot and Nutrient Management
2. Development
3. Groundwater Quantity and Quality

Excerpts from plan:

#### **Under Groundwater quantity and quality**

*Goal 1:* Protect and maintain groundwater quality resources in Benton County.

It is important to recognize previously identified water quality problems in Benton County. Because of the increasing population, there is also a need to protect drinking water from contamination.

#### **Previously identified water quality problems in Benton County.**

As of 2007, four water bodies within Benton County have been designated as impaired by the MPCA including (mercury impairment listings not included):

Little Rock Creek – Biological impairment, fish & invertebrates

Mayhew Creek - Biological impairment, fish & invertebrates

Little Rock Lake – Nutrient impairment

Mayhew Lake – Nutrient impairment

The causes(s) of these impairments are unknown at this time.

#### **Source Water Assessments of Public Water Systems**

The Minnesota Department of Health (MDH) regularly monitors 71 public water system sites throughout Benton County for contaminants regulated under the federal Safe Drinking Water Act.

The Minnesota Department of Health (MDH) has recently completed "source water assessments" for all of the approximately 7,000 public water systems in the state. Each assessment provides a concise summary of available information regarding the source(s) - such as a well, lake, or river - supplying a public water system. ***Benton County's 71 site assessments (sites located throughout the county) are available online.***

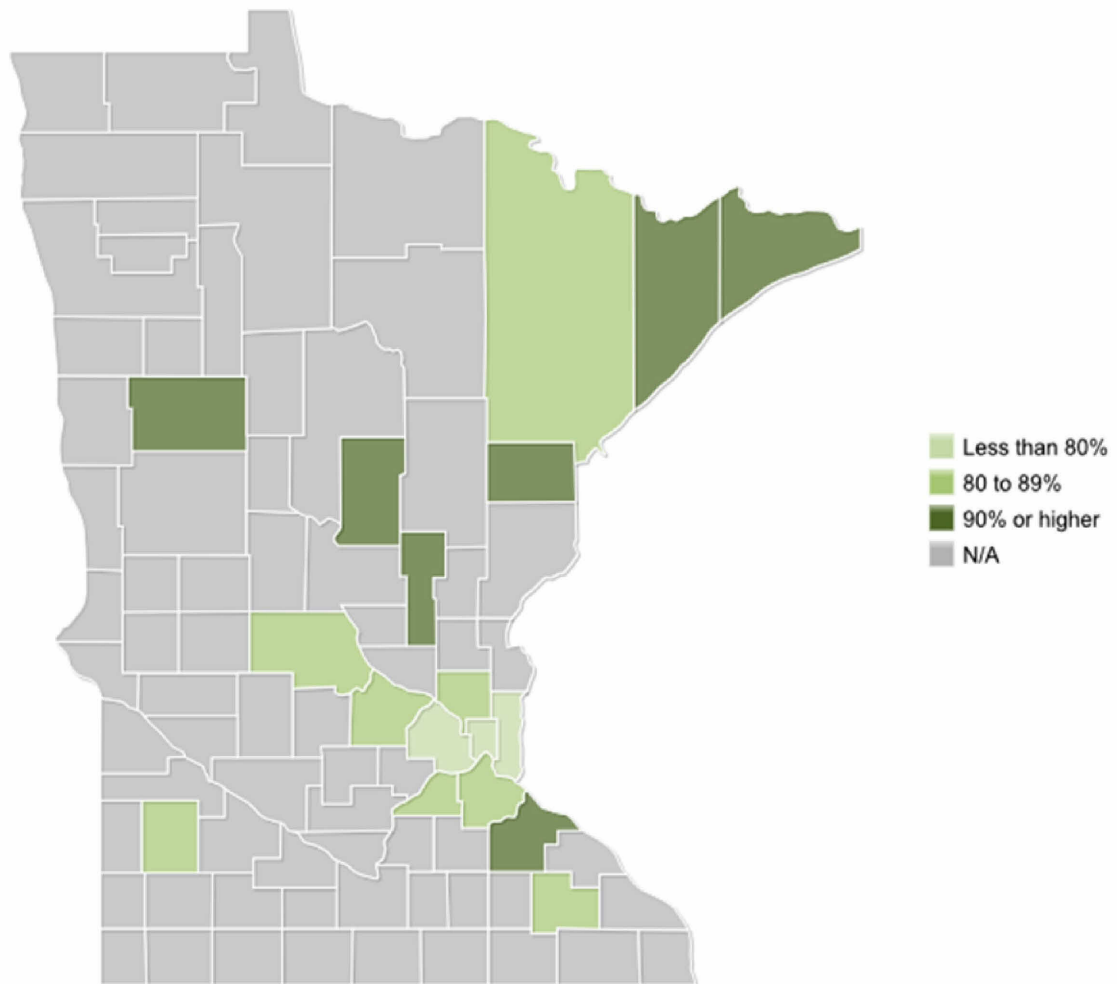
<http://www.health.state.mn.us/divs/eh/water/index.html>

## Air Quality

The Minnesota Pollution Control Agency currently does not have any air quality monitoring sites located in Benton County. The closest monitoring site is located in St. Cloud near the western Benton County border. St. Cloud data trends demonstrate overall good quality air throughout the year.

### Percentage of days that the Air Quality Index was "Good"

By county, Minnesota, 2013

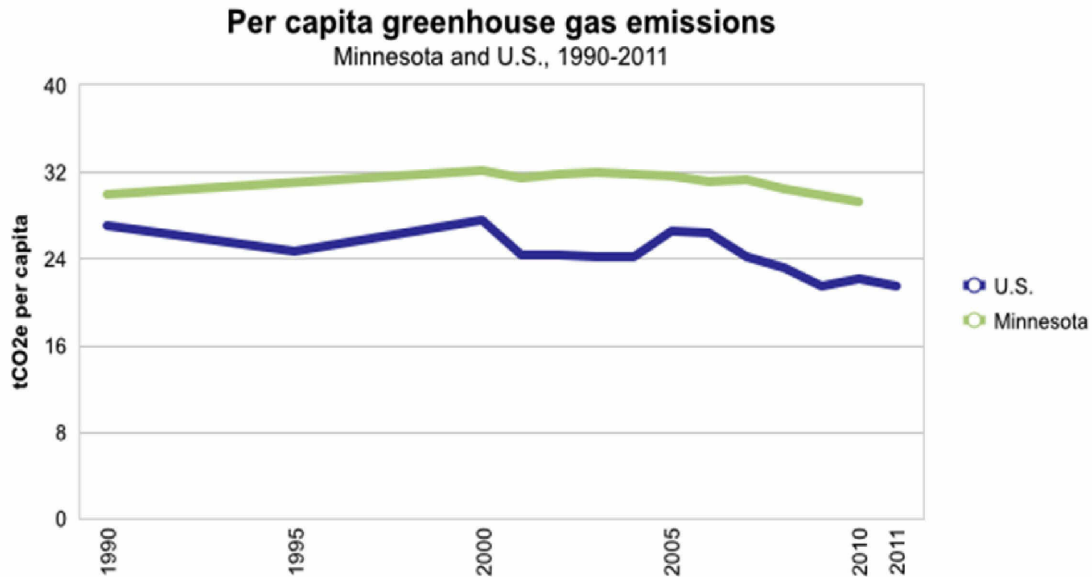


#### Notes:

A value of "N/A" indicates that data does not exist or has been suppressed because too few days were monitored.

#### Sources:

U.S. Environmental Protection Agency.



Notes: tCO2e = Tons of carbon dioxide equivalent

In Minnesota, current data reporting and analysis procedures result in about a two year lag in tabulation of calendar year emissions.

Sources: Minnesota Pollution Control Agency and U.S. Environmental Protection Agency.

### Blood Lead Testing for Children Less than 6 Years of Age (Percent Tested)



Minnesota Department of Health, Environmental Health Division  
Childhood Lead Poisoning Prevention Program



Figure 1.

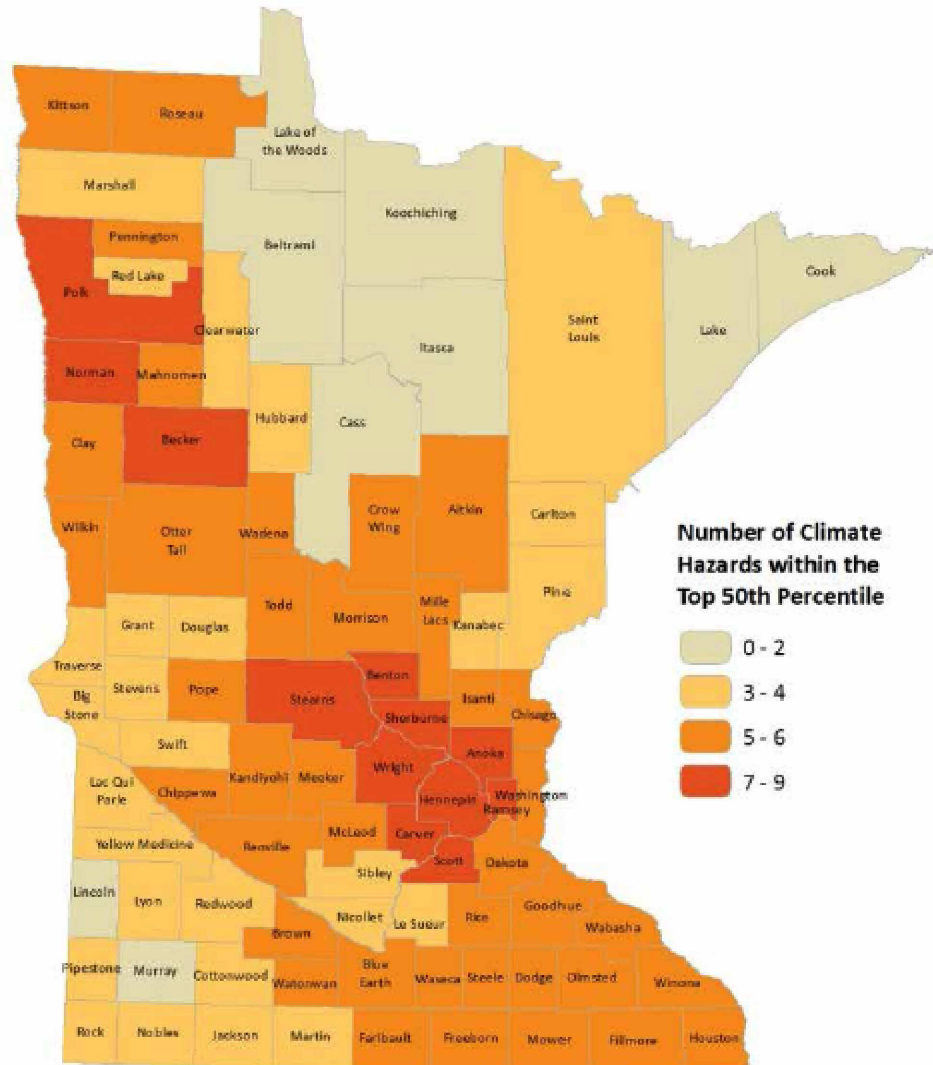


**Number of Vulnerable Population Characteristics within the Top 50th Percentile**

- 2 - 5
- 6 - 7
- 8 - 9
- 10 - 12

# Composite Climate Hazards Index

Number of Climate Hazards within the Top 50th Percentile



## Assessment Data Sources

Central MN Community Health Survey February 2013

Benton County: <http://www.co.benton.mn.us>

Benton Stearns Ed. District

Benton County Human Services, Child Protection Unit

MN Center for Health Statistics, Minnesota Department of Health:  
[www.health.state.mn.us/divs/chs/](http://www.health.state.mn.us/divs/chs/)

Minnesota Vital Statistics State and County Trends:  
[www.health.state.mn.us/divs/chs/trends/index.html](http://www.health.state.mn.us/divs/chs/trends/index.html)

Minnesota County Health Tables:  
[www.health.state.mn.us/divs/chs/countytables/index.htm](http://www.health.state.mn.us/divs/chs/countytables/index.htm)

Minnesota Health Statistics Annual Summary:  
[www.health.state.mn.us/divs/chs/annsum/index.htm](http://www.health.state.mn.us/divs/chs/annsum/index.htm)

Minnesota Injury Data Access System (MIDAS):  
[www.health.state.mn.us/injury/midas/ub92/index.cfm](http://www.health.state.mn.us/injury/midas/ub92/index.cfm)

Minnesota Cancer Surveillance System (MCSS):  
[www.health.state.mn.us/divs/hpcd/cdee/mcss/](http://www.health.state.mn.us/divs/hpcd/cdee/mcss/)

Minnesota Public Health Data Access:  
<https://apps.health.state.mn.us/mndata/>

Kids Count Data Center (Annie E. Casey Foundation):  
<http://datacenter.kidscount.org/data/acrossstates/Default.aspx>

MN Department of Public Safety Crash Data (DPS):  
<https://dps.mn.gov/divisions/ots/reports-statistics/pages/crash-facts.aspx>

MN Department of Education Data (MDE):  
<http://education.state.mn.us/MDE/Data/index.html>

MN Department of Natural Resources (DNR):  
[www.dnr.state.mn.us/maps/index.html](http://www.dnr.state.mn.us/maps/index.html)

Minnesota State Demographic Center:  
[www.demography.state.mn.us/](http://www.demography.state.mn.us/)

Minnesota Student Survey:  
[www.health.state.mn.us/divs/chs/mss/](http://www.health.state.mn.us/divs/chs/mss/)

County Health Rankings:  
[www.countyhealthrankings.org/app#/minnesota/2014/rankings/outcomes/overall/by-rank](http://www.countyhealthrankings.org/app#/minnesota/2014/rankings/outcomes/overall/by-rank)

US Census data/ American Community Survey/American Fact Finder:  
<http://factfinder2.census.gov/faces/nav/jsf/pages/index.xhtml>

Centers for Disease Control and Prevention (CDC):  
[www.cdc.gov/](http://www.cdc.gov/)

Behavioral Risk Factor Surveillance System (BRFSS):  
[www.health.state.mn.us/divs/chs/brfss/index.html](http://www.health.state.mn.us/divs/chs/brfss/index.html)  
and [www.cdc.gov/brfss/](http://www.cdc.gov/brfss/)

### **Benchmarking and Goals**

In this assessment, data is compared against state and federal data for the purpose of benchmarking Benton County's performance in certain areas against broad norms and trends. It also assesses Benton County's achievement toward county, state and federal public health goals. In some cases, data is compared against other counties for comparison against peer performance.

**Healthy People 2020:** It is a statement of national health objectives, a national prevention agenda

**Behavioral Risk Factor Surveillance Survey (BRFSS):** Synthetic estimates of state and county level estimated percentages for behavioral risk factors represent the percent of adults considered to be at risk for those behaviors. These estimated percentages were derived through a synthetic estimation method, which adjusts statewide BRFSS percentages by the age and gender.